

STATE OF WEST VIRGINIA
FULL PERFORMANCE EVALUATION
OF THE
DIVISION OF WORKERS' COMPENSATION

**Compliance Review of
Independent Auditor's Findings**

OFFICE OF LEGISLATIVE AUDITOR
Performance Evaluation and Research Division
Building 5, Room 751
State Capitol Complex

CHARLESTON, WEST VIRGINIA 25305
(304) 347-4890

PE 96-15-56

STATE OF WEST VIRGINIA

**FULL PERFORMANCE EVALUATION
OF THE**

DIVISION OF WORKERS' COMPENSATION

**Compliance Review of
Independent Auditor's Findings**

OFFICE OF LEGISLATIVE AUDITOR
Performance Evaluation and Research Division
Building 5, Room 751
State Capitol Complex

CHARLESTON, WEST VIRGINIA 25305
(304) 347-4890

WEST VIRGINIA LEGISLATURE
Performance Evaluation and Research Division

Building 5, Room 751A
1900 Kanawha Boulevard, East
Charleston, West Virginia 25305-0592
(304) 347-4890
(304) 347-4889 FAX



Antonio E. Jones, Ph.D.
Director

December 2, 1996

The Honorable A. Keith Wagner
West Virginia State Senator
Box 446
Jaeger, West Virginia 24844

The Honorable Joe Martin
West Virginia State Delegate
1900 Kanawha Boulevard, East
Building 1, Room 213 East
Charleston, West Virginia 25305

Gentlemen:

Pursuant to the West Virginia Sunset Law, we are transmitting the third installment of the Full Performance Evaluation of the Division of Workers' Compensation, which will be reported to the Joint Committee on Government Operations on Sunday, December 8, 1996. The issue covered herein is "Compliance Review of Independent Auditor's Findings."

Please let me know if you have any questions regarding this report.

Sincerely,

A handwritten signature in cursive script, appearing to read "Antonio E. Jones".

Antonio E. Jones

AEJ/Ahs

Enclosure

TABLE OF CONTENTS

Executive Summary	ix
OBJECTIVE, SCOPE AND METHODOLOGY	1
 Reported to Joint Committee on Government Operations July 14, 1996	
PART 1 - GENERAL	9
Self-Insurance	9
Issue Area 1: Approval for self-insurance was being granted on a case-by-case basis at the sole discretion of the Commissioner	11
Issue Area 2: The Division should develop and implement standard procedures for reviewing the information supplied by employers . . .	13
Issue Area 3: The application/re-application reviews should be adequately documented and conclusions should be reached as to whether employers should be allowed to maintain self-insured status	17
Issue Area 4: The Division should change its surety policy to avoid putting the fund in a liability position	19
Issue Area 5: The Division should require self-insured employers to submit audited financial statements and proof of required amount of surety bond within 90 days of their fiscal year end	21
Issue Area 6: The Division should develop a plan for the timely transition from self-insured to subscriber status prior to any bankruptcy petition to facilitate adequate premiums commensurate with insured risk	23
 Underwriting/Risk Management Initiatives	 25
Issue Area 7: The Division should obtain the necessary computer systems and employ experience rating formulas to increase premiums commensurate with incurred losses	27
Issue Area 8: The Division should establish a comprehensive risk management program to work with employers to reduce exposure to injuries .	31
 Reported to Joint Committee on Government Operations September 15, 1996	
Organizational Structure and Personnel Requirements	35
Issue Area 9: Accounting Department is grossly understaffed	37
Issue Area 10: The Division should establish a controllership function	41
Issue Area 11: The Division should hire a qualified in-house actuary	43
Issue Area 12: The Division should evaluate its human resource pool	47

TABLE OF TABLES

COMPLIANCE SCORECARD	<i>xiii</i>
TABLE 1: Generally Accepted Government Auditing Standards relating to management controls and compliance reviews	4
TABLE 2: Levels of compliance	5
TABLE 3: Self-insurance application process	13
TABLE 4: Surety shortages by classification of financial risk	15
TABLE 5: Insurance products under consideration	29
TABLE 6: Financial Accounting education and experience roster	38
TABLE 7: Contract for actuarial services	43
TABLE 8: Schedule for professional fees for consulting actuary	44
TABLE 9: Summary of training records	50
TABLE 10: Employment advertisements	51
TABLE 11: Organizational placement of internal control functions	57

EXECUTIVE SUMMARY

In 1991, Ernst and Young (E & Y) was employed by the Bureau of Employment Programs to audit the Workers' Compensation Division's financial statements for fiscal year 1991. In lieu of issuing financial statements for the Division, *E & Y issued a final draft management letter on March 16, 1992 that represents the most comprehensive and up-to-date independent audit of the Workers' Compensation Division. The Performance Evaluation and Research Division is conducting a compliance review to measure the responsiveness of management to the E & Y recommendations, as well as the Division's progress toward reestablishing the security and solvency of the fund.* Generally Accepted Government Auditing Standards (GAGAS) requires following-up the work of other auditors and places emphasis on the importance of management controls (the final draft management letter raised many management controls issues). For these reasons, as well as a desire to avoid duplication of efforts, the compliance review format was adopted.

Reported to Joint Committee on Government Operations July 14, 1996

PART 1 - GENERAL

Self-Insurance

Issue Area 1: Approval for self-insurance was being granted on a case-by-case basis at the sole discretion of the Commissioner.

Level of Compliance: **In compliance.** All applications for self-insurance must be approved by the Compensation Programs Performance Council.

Issue Area 2: The Division should develop and implement standard procedures for reviewing the information supplied by employers.

Level of Compliance: **Partial compliance.** The Division has developed a comprehensive self-insurance application process in collaboration with Ernst and Young. Full implementation of the new applications process has been achieved. However, the re-application process has not been implemented due to vacancies in key positions in the Self-Insurance Unit.

Issue Area 6: The Division should develop a plan for the timely transition from self-insured to subscriber status prior to any bankruptcy petition to facilitate adequate premiums commensurate with insured risk.

Level of Compliance: **In compliance.** The Division has developed a process for the revocation of self-insured status and has revoked the self-insured status of one employer. At the time the employer was transitioned to subscriber status, the Division calculated its experience modified subscriber premium rate by figuring what its rate would have been had the employer been a regular subscriber during the period of self-insurance.

Underwriting/Risk Management Initiatives

Issue Area 7: The Division should obtain the necessary computer systems and employ experience rating formulas to increase premiums commensurate with incurred losses.

Level of Compliance: **Partial compliance.** New computer systems have been installed that will enable the Division to make premiums commensurate with incurred losses. Rate making methodologies are being explored and the Division has completed a considerable amount of planning to this end. An employee of the Self-Insurance Unit is being trained to serve as a Rate making specialist.

Issue Area 8: The Division should establish a comprehensive risk management program to work with employers to reduce exposure to injuries.

Level of Compliance: **Planned compliance.** The Compensation Programs Performance Council has created a Safety and Loss Control Advisory Committee. Two administrative rules (exempt from the legislative review process) have been proposed which provide both positive and negative incentives to require or encourage employers to take certain measures to develop/maintain safe workplaces. Efforts are being made to hire a Safety Director.

Level of Compliance: **Partial compliance.** The Division's Training Department has been actively engaged in staff development programs. The Division lacks a comprehensive needs assessment/skills inventory to guide the development effort. In addition, training efforts have waned in first 7 months of 1996.

Issue Area 14: The Division should actively recruit skilled employees.

Level of Compliance: **In compliance.** Newspaper advertisements and related RFP's substantiate that recruiting efforts have been made for certain skilled positions.

Issue Area 15: The Division should create formal job descriptions, including responsibilities and experience requirements.

Level of Compliance: **In compliance.** The Personnel Policy and Procedures Manual includes a generic Division of Personnel position description for each job title employed by the Bureau. These descriptions include job responsibilities and required credentials. The Division has also created job-specific job descriptions for employees of the Division.

Issue Area 16: The Division should establish an internal audit section reporting directly to the commissioner or executive director.

Level of Compliance: **Partial compliance.** The Division has provided for limited internal audit projects through its Financial Accounting unit and the Bureau of Employment Programs' Management Analysis unit. However, neither unit provides regular, ongoing internal audit services. To the extent these units do conduct audit activities, the nature of the work is often consistent with "quality control" versus traditional internal audit work.

Financial Statement Reporting

Issue Area 17: The Division should make necessary changes to move from cash based accounting to an accrual-based system.

are maintaining the investment quality review function. There is considerable room for improvement with respect to the forecasting of the Division's liquidity/cash flow needs.

Issue Area 22: The Division should modify its handling of IGTs to provide for timely recording and eliminate mailing of inappropriate delinquency statements to state agencies.

Level of Compliance: **In compliance.** The Division has changed its method of processing IGTs thereby eliminating the problems reported by Ernst an Young.

Issue Area 23: The Division should create a central contract file.

Level of Compliance: **In compliance.** The Bureau of Employment Programs is maintaining a central contract file.

OBJECTIVE, SCOPE AND METHODOLOGY

This full performance evaluation of the West Virginia Workers' Compensation Division was conducted in accordance with the West Virginia Sunset Law, Chapter 4, Article 10 of the *West Virginia Code*. A full performance evaluation is a means to determine for an agency whether or not the agency is operating in an efficient and effective manner and to determine whether or not there is a demonstrable need for the continuation of the agency. The evaluation will help the Joint Committee on Government Operations determine the following:

- if the agency was created to resolve a problem or provide a service;
- if the problem has been solved or the service has been provided;
- the extent to which past agency activities and accomplishments, current projects and operations and planned activities and goals are or have been effective;
- if the agency is operating efficiently and effectively in performing its tasks;
- the extent to which there would be significant and discernable adverse effects on the public health, safety or welfare if the agency were abolished;
- if the conditions that led to the creation of the agency have changed;
- the extent to which the agency operates in the public interest;
- whether or not the operation of the agency is impeded or enhanced by existing statutes, rules, procedures, practices or any other circumstances bearing upon the agency's capacity or authority to operate in the public interest, including budgetary, resource and personnel matters;
- the extent to which administrative and/or statutory changes are necessary to improve agency operations or to enhance the public interest;
- whether or not the benefits derived from the activities of the agency outweigh the costs;
- whether or not the activities of the agency duplicate or overlap with those of other agencies, and if so, how the activities could be consolidated;
- whether or not the agency causes an unnecessary burden on any citizen by its decisions and activities;
- what the impact will be in terms of federal intervention or loss of federal funds if the agency is abolished;

The evaluation of the Division covers the period of January 1, 1992 to the present. However, events prior to this period may be included when necessary. The evaluation included a planning process and the development of audit steps necessary to collect competent, sufficient and relevant evidence to answer the audit objectives. Physical, documentary, testimonial and analytical evidence used in the evaluation was collected through interviews, review of records, and site visitations.¹ The evaluation was conducted in accordance with Generally Accepted Government Auditing Standards (GAGAS) issued by the Comptroller General of the United States.

¹ *Documentary evidence is created information such as letters, contracts and records. Physical evidence is the direct observation of the activities of people, property or events. Testimonial evidence consists of statements received in response to inquiries or from interviews, and analytical evidence includes the separation of information into components such as computations, comparisons and reasoning.*

a reportable condition in which the design or operation of one or more of the specific internal control structure elements does not reduce to a relatively low level the risk that errors or irregularities in amounts that would be material in relation to the financial statements being audited may occur and may not be detected within a timely period by employees in the normal course of performing their assigned functions.

The final draft management letter detailed the material weaknesses of the Division, which rendered the Division impossible to audit. In subsequent financial audits for FY 1993 and FY 1994, Ernst and Young continued to find the Division's records to be

generally inadequate to produce reliable financial information with respect to premiums receivable from subscribers and self-insurers; premium advance deposits; and the estimated liability for unpaid claims and claim adjustment expenses, including contingent liabilities for self-insured employers who have defaulted or who may reasonably be expected to default. Additionally, weaknesses in the internal control structure are of an extent that cannot be overcome by auditing procedures.

Generally, the purpose of a financial audit is to provide the users of the resulting financial statements assurance that the financial statements do accurately represent the financial status of the auditee (an "unqualified opinion"). Because of the pervasive material weakness situation, E & Y was unable to express an opinion on the Division's financial statements. The 1993 and 1994 reports of E & Y also stated "the Division's recurring losses and deficit raise substantial doubt about its ability to continue as a going concern in its present form," meaning the Workers' Compensation Division would not be able to meet its obligations to claimants in the foreseeable future if problems were not corrected.

During the 1995 Legislative Session, the West Virginia Legislature passed S.B. 250 which made many reforms to the workers' compensation system. As a result of the legislation, the efforts of the management and employees of the Bureau and Division, and several consulting firms involved in the Division's Total Quality Initiative (TQI), the Workers' Compensation Division received its first unqualified audit opinion from Ernst and Young for fiscal year 1995. More importantly, the 1995 financial audit also marked the end of the "going concern" paragraph.

Because the 1992 Ernst and Young final draft management letter represents the most comprehensive and up-to-date independent audit of the Workers' Compensation Division, the Performance Evaluation and Research Division is conducting a compliance review to measure the responsiveness of management to the E & Y recommendations. The approach will enable us to evaluate the Division's progress toward reestablishing the security of the fund and resolving the unfunded liability. Other justifications for the selection of a compliance audit format include a desire not to duplicate the work Ernst and Young had already conducted, the 1992 final draft management letter's primary focus on management controls and the GAGAS standards requiring the following up of the work of other auditors. Excerpts of the GAGAS standards relating to the importance of management controls and the importance of checking compliance with previous audits have been included in TABLE 1.

TABLE 2
Levels of Compliance

In Compliance - The Division has corrected the problems identified in the final draft management letter.

Partial Compliance - The Division has partially corrected the problems identified in the final draft management letter.

Planned Compliance - The Division has not corrected the problem but has provided sufficient documentary evidence to find that the agency will do so in the future.

In Dispute - The Division does not agree with either the problem identified or the proposed solution.

Non-Compliance - The Division has not corrected the problem identified in the final draft management letter.

Reported to Joint Committee on Government Operations

July 14, 1996

PART 1 - GENERAL

Self-Insurance

West Virginia Code §23-2-9 provides that employers meeting certain statutory criteria may be permitted to self-insure their workers' compensation risk, including their risk of catastrophic injuries. In 1995, this authority was narrowed by S.B. 250 which eliminated self-insurance of *second injury* coverage for new self-insurers. According to Milliman and Robertson, Inc. in its *Rate Level Projections: Fiscal Year Ending 1996*, self-insured second injury coverage "generated a substantial portion of the Division's overall unfunded liability," approximately \$400 million or 22% of the overall unfunded liability of \$1.84 billion as of June 30, 1994. Statutory prerequisites to granting self-insured status require each such employer to:

- demonstrate sufficient financial capability and responsibility,
- provide a health and safety program in its workplaces,
- submit security or bond sufficient to balance the employer's financial condition against its existing and expected liability, and
- satisfy any liability that is in excess of premiums paid to the Division.

Currently, there are about 300 self-insured accounts, about 150 of which are active. The statute requires the Division to review each self-insured employer annually to ensure that each self-insured employer is providing adequate levels of surety and continuing to meet its financial obligations and all other statutory requirements. Created in 1994, the Self-insurance Unit is a relatively new entity of the Division that was established to provide for the processing of new applications and review of existing self-insured employers.

Ernst and Young's Subscriber/Self-insurance Equity issue focused on the *prevention* of losses incurred as a result of unfit employers being permitted to self-insure. In the past, regular subscribers have shared such losses. While the 1992 final draft management letter did not address the problem of how to assign the losses that do occur, it provided guidance for the prevention of their occurrence.

ISSUE AREA 1: APPROVAL FOR SELF-INSURANCE WAS BEING GRANTED ON A CASE-BY-CASE BASIS AT THE SOLE DISCRETION OF THE COMMISSIONER

Level of WCD Compliance: IN COMPLIANCE

All applications for self-insurance must be approved by the Compensation Programs Performance Council.

Analysis

Legislative Rule §85-9-4 contemplates that self-insurance application approval/denial decisions are to be made at the discretion of the Commissioner. However, the Compensation Programs Performance Council, of which the Commissioner is the statutory chair, adopted a resolution transferring this authority from the Commissioner to the Performance Council. The authority to do so is provided in *West Virginia Code* §21A-3-7, powers and duties of the Compensation Programs Performance Council, and provides that

[t]he council should have the following powers and duties:

- (a) Assist the governor and the commissioner in the development of overall administrative policy for the unemployment compensation and workers' compensation systems of the state.
- (b) Recommend legislation and establish regulations designed to ensure the effective administration and financial viability of the unemployment compensation system and the workers' compensation system of West Virginia...
- (l) Consider such other matters regarding the unemployment compensation system or the workers' compensation system as the commissioner or any other appointed member of the performance council may desire...

Furthermore, a proposed rewrite of §85-9 substitutes references to the *Commissioner* with *Division*. The self-insurance policies and procedures dictate that the decision of whether to approve or deny applications for self-insurance rests with the Compensation Programs Performance Council. Reports from the Division's Self-insurance Unit to the Performance Council as well as minutes from Performance Council meetings demonstrate a systematic, case-by-case method for making these determinations.

Conclusions and Recommendations

By allowing the Performance Council to make approval/denial decisions as a body through a systematic and well documented process, the WCD has introduced controls that significantly reduce the hypothetical risks associated with biased decision making. *The revision of §85-9 will be necessary to eliminate ambiguities in the administrative law.*

ISSUE AREA 2: THE DIVISION SHOULD DEVELOP AND IMPLEMENT STANDARD PROCEDURES FOR REVIEWING THE INFORMATION SUPPLIED BY EMPLOYERS

Level of WCD Compliance: PARTIAL COMPLIANCE

The Division has developed a comprehensive self-insurance application process in collaboration with Ernst and Young. Each new application is reviewed on an individual basis and includes the steps outlined in TABLE 3.

TABLE 3 Self-Insurance Application Process
Request for Application - Appropriate application materials are sent along with an "informational supplement" explaining the process and specific filing requirements.
Receipt and Review of Application - Application is checked for completeness and request for additional information is sent if necessary. Employer is notified of receipt and file is established.
In Good Standing Audit - An audit is conducted to determine if the employer's WC account is current.
Pre-audit - Employer's account is audited to determine if claims payments have exceeded premium taxes collected from the employer. The employer must repay any excess liability, or enter a repayment agreement with the Commissioner (not to exceed 3 years).
Buy-out Audit - Division's actuary projects the future cost of awards and medical benefits granted after the effective date of SI status for all injuries that occurred while the employer was a regular subscriber. The employer must either repay the present value of the liability, enter a payback agreement for this amount (not to exceed 3 years), or agree to assume the liability. If the employer chooses repayment agreement or assumption of liabilities options, the employer must post additional security.
Financial Review - Financial statement analysis (including footnotes), Z-score analysis, and other financial ratio analyses are completed, and the authenticity of the information is evaluated. A comprehensive review of other financial information, such as federal income tax return, SEC Form 10-K, SEC Form 10-Q, SEC Form 8-K, organization chart, corporate structure, ownership history, company description and presence/lack of excess insurance coverage. A review of the third party administrator and the employer's standing with other governmental agencies are also completed.
Conclusion - A conclusion is then made concerning approval or denial of the application. The appropriate level of surety is then determined.
Reporting - The self-insurance section then compiles information and prepares a standard report including its recommendation.
Supervisory Review - The Director of the self-insurance section completes an extensive final review of the entire file before submission to the Performance Council (all stages of the process also require adequate review of work).
Performance Council Approval - The Compensation Programs Performance Council approves or disapproves the applicant by vote.

TABLE 4
Surety Shortages by Classification of Financial Risk
(1994)

FINANCIAL RISK	SHORTAGE BY CLASSIFICATION	PERCENTAGE OF TOTAL SHORTAGE
Extreme	\$148.8 million	23%
High	42.2 million	7%
Moderate	368.8 million	57%
Low	41.1 million	6%
Unclassified	47.4 million	7%
TOTAL SHORTAGE	\$649.9 million	100%

Source: Ernst and Young surety study dated May 1, 1995.

Because of the lack of standardization of the self-insurance application process in prior years; mergers, acquisitions and divestitures; the lack of re-application reviews; and the volatility of most businesses, many self-insured employers may not meet the financial or other requirements provided in statute. This increases the likelihood of the Division incurring some of the losses these surety shortages represent.

Conclusions and Recommendations

In light of the potential liabilities that could be realized by the Division, *management should continue to work to bring the Self-insurance Unit up to an optimal staffing level.* The re-application/surety review process should be given top priority by the Division as it is imperative to solvency of the fund and is required by statute. It should be abundantly clear that if each self-insured employer is properly collateralized, even firms representing extreme risks for bankruptcy hold no real risk to the Division. *The Division should establish time line goals of 50%, 60%, 70%, 80%, 90%, and 100% collateralization by future dates, allowing for maturation of workout plans but still driving aggressive resolution of the surety shortage.*

ISSUE AREA 3: THE APPLICATION/RE-APPLICATION REVIEWS SHOULD BE ADEQUATELY DOCUMENTED AND CONCLUSIONS SHOULD BE REACHED AS TO WHETHER EMPLOYERS SHOULD BE ALLOWED TO MAINTAIN SELF-INSURED STATUS

Level of Compliance: IN COMPLIANCE

The Self-insurance Unit presents appropriately detailed reports to the Compensation Programs Performance Council (CPPC) which include the recommendations of management.

Analysis

The reports to the CPPC summarizing eight applications processed under the new system were analyzed as to their content. The reports are in a standardized format, which includes a description of the company, the results of the in-good-standing audit, the results of the pre-audit, the buy-out process, the financial analysis, recommended surety amount, a section for other information/concerns, the company's standing with other state agencies, and a conclusion containing the recommendation to the Performance Council. The *Information Summary* is consistent with the format set forth in the application policies and procedures manual developed in collaboration with Ernst and Young.

Conclusions and Recommendations

The reporting standard specified in the re-application policies and procedures manual should be employed when the Self-insurance Unit implements its re-application process.

ISSUE AREA 4: THE DIVISION SHOULD CHANGE ITS SURETY POLICY TO AVOID PUTTING THE FUND IN A LIABILITY POSITION

Level of Compliance: PARTIAL COMPLIANCE

The Division has developed a policy which requires all self-insured employers to provide surety equal to the larger of \$1,000,000 or the actuarially-determined liability of the firm. The actuarially-determined liability of a firm is comprised of the accrued and contingent liability for the past, current and future operations. The new formula was introduced by rule §85-9-9 in 1993. However, as of May 1, 1996, the policy has only been enforced on six existing employers and the thirteen new self-insurers, thus the Division is only in partial compliance with the issue.³

Analysis

The Division and Ernst and Young completed a self-insurance surety project in April 1995. The project culminated in a comprehensive surety review process, a surety database and an up-to-date surety status report detailing each self-insured employer's financial condition and surety position. Due to the staffing shortage, the unit did not aggressively pursue these surety amounts. The Self-insurance Unit has requested additional surety of six employers in total. Five of these six shortages were addressed as other self-insurance issues arose, such as mergers of self-insured employers, parental guarantees, and acceptable surety language, etc. The other was pursued because of the relative size and risk associated with the shortage.⁴ As of May 31, 1996, the Division has received or accepted work-out-plans for \$46.7 million in surety shortages. The thirteen new self-insured employers were also required to provide appropriate surety.

Conclusions and Recommendations

Enforcement of the revised surety requirements should be a high priority of the Self-insurance Unit, now that the Unit is moving toward its optimal staffing level.

³ *This is not to suggest that all other self-insurers are under-collateralized. Several employers are properly collateralized. A few employers have provided surety in excess of the Division's requirements. E & Y noted in the 1992 final draft management letter, "that there [was] no specific methodology to follow in determining the required amount of security."*

⁴ *Such cases must be considered on individual bases. Impact on citizen-employees, the cost of unemployment compensation and other benefits that must be provided, lost tax revenue, etc. often make it difficult to force employers to correct collateral shortages immediately.*

ISSUE AREA 5: THE DIVISION SHOULD REQUIRE SELF-INSURED EMPLOYERS TO SUBMIT AUDITED FINANCIAL STATEMENTS AND PROOF OF REQUIRED AMOUNT OF SURETY BOND WITHIN 90 DAYS OF THEIR FISCAL YEAR END

Level of Compliance: PARTIAL COMPLIANCE

Due to the staffing problems discussed in earlier sections of this report, the Division has not required employers to submit audited financial statements and other information on an annual basis. The policies and procedures manual does however, adequately address the Division's needs for information by specifying that audited financial statements and other materials be requested on an annual basis. With respect to the collection of annual proof of surety, the Division has changed language on these instruments to include "evergreen clauses" (versus specific coverage dates), which cause such instruments to be effective perpetually, until 60 days after receipt of cancellation notice from the guarantor.⁵ New surety instruments must be provided to the Division when surety adjustments are required. The Division does require annual proof of surety from the 15 employers maintaining surety instruments having the antiquated, finite period language.

Analysis

The Division's processes, policies and procedures document adequately addresses materials that should be requested in the re-application process on an annual basis. The document does not require that these items be provided by 90 days before the employers' fiscal year end or specify a due date, other than requiring that these documents be provided to the Division within 30 days of the letter of request's date. The policy does however satisfy the primary intent of the E & Y recommendation at the planning level, by addressing the need for annual collection of this information.

In 1995, while Ernst and Young was assisting with the development of re-application procedures, the exercise of collecting 1994 financial statements and other information was executed as set forth in the process manual. The information was compiled in three-ring binders to facilitate the re-application process. Due to the lack of staff, this information was not collected the following year.

Prior to September 1, 1994, the Division accepted bond language restricted to coverage of specific periods of time. This language led to a situation where multiple bonds could cover multiple periods of time for a single employer. This language also allowed lapses in coverage periods to occur. It was under this environment that the E & Y recommendation to require annual proof of surety was made. Since September 1, 1994, the Division has required that all *new* surety instruments contain "evergreen" language. This language obligates an instrument to cover all time periods relating to an employer's self-insured status. The adoption of a bond language template

⁵ *In the event of a cancellation by the guarantor, the Division has 60 days to draw on the full penal value of the letter of credit, if the self-insured employer fails to provide replacement surety.*

ISSUE AREA 6: THE DIVISION SHOULD DEVELOP A PLAN FOR THE TIMELY TRANSITION FROM SELF-INSURED TO SUBSCRIBER STATUS PRIOR TO ANY BANKRUPTCY PETITION TO FACILITATE ADEQUATE PREMIUMS COMMENSURATE WITH INSURED RISK

Level of Compliance: IN COMPLIANCE

The Division has developed a process for the revocation of self-insured status. The Division has revoked the self-insured status of one employer. At the time the employer was transitioned to subscriber status, the Division calculated its experience modified subscriber premium rate by figuring what its rate would have been had the employer been a regular subscriber during the period of self-insurance.

Analysis

The Division's revocation process consists of the following steps:

- Self-insurance Unit compiles and reviews all relevant data, meets with the subject employer, determines exposure/risk, and makes recommendation to executive management.
- Executive management reviews recommendation and relevant data and makes final recommendation to Performance Council.
- Performance Council reviews recommendation to revoke employer's self-insured status and approves or rejects it.
- Employer is notified of revocation.
- Workout plan is negotiated for claims and surety.

Because the re-application process has not been implemented, the Division has revoked the self-insured status of only one employer to date. In that case, the company returned to the regular fund at the base rate applicable to its class which was modified by a factor that was calculated by examining the premiums the company would have paid had they been a regular subscriber during a three year "look back" period and the expected loss rates, limited charges and composite loss limit computed as if the fund paid the claims on behalf of the company during the same three year period. The resulting rate was the same as it would have been had the company been a regular subscriber.

The Division has also subscribed to a Dunn and Bradstreet service which will provide monthly reports on companies having self-insured status. The service should help the staff to identify those companies representing substantial risks to the Division. This should enable the Division to transition struggling firms to subscriber status before the health of the business is too precarious to absorb the high costs associated with continuing to meet liabilities incurred while self-insured and paying full subscriber premiums for the immediate quarter.

Underwriting/Risk Management Initiatives

Underwriting is the process of selecting and classifying exposures to risk. The term *underwriting* is also commonly applied to the closely related, overlapping science, *rate making*. Such is the case with the E & Y final draft management letter. Ernst and Young recommended that the Division work to make rates commensurate with losses. This results in a more equitable distribution of costs, but more importantly, it creates an incentive structure under which employers that succeed in preventing losses pay lower rates and employers not effectively managing risks pay higher rates.

Risk management or *loss control* in the context of workers' compensation insurance involves the prevention of deaths or injuries by identifying hazards in the workplace and providing remedies for them. Examples of hazards are unstable storage shelves, heavy lifting without support belts, slippery floors, high levels of respirable dust and personnel lacking safety training. Ernst and Young recommended the development of a comprehensive risk management program, including inspections of employer sites. Underwriting, rate making and risk management are core functions of any insurance entity.

ISSUE AREA 7: THE DIVISION SHOULD OBTAIN THE NECESSARY COMPUTER SYSTEMS AND EMPLOY EXPERIENCE RATING FORMULAS TO INCREASE PREMIUMS COMMENSURATE WITH INCURRED LOSSES

Level of Compliance: PARTIAL COMPLIANCE

New computer systems have been installed that will enable the Division to make premiums commensurate with incurred losses. Rate making methodologies are being explored and the Division has completed a considerable amount of planning to this end. An employee of the Self-Insurance Unit is being trained to serve as a rate making specialist.

Analysis

The most critical component in the development of a rate making system is quality information with which to calculate experience modification factors. The Workers' Compensation Insurance System, also known as WCIS, was installed in stages during October 1995 and April 1996. WCIS is a database tool that can sort claim information by employer, class code, accident year, and other critical information. In March 1996, the Micro Insurance Reserve Analysis system or MIRA, an automated case reserving system capable of generating reserves for each individual claim, was established. In its simplest form, WCIS stores claims information for which MIRA establishes *reserves*. The *reserves* are liabilities for the past, present and future cost of each claim. Reserving allows for the calculation of actual and expected losses, which provide the fundamental elements for calculating *experience modification factors*. An experience modification factor is equal to actual losses *divided by* expected losses *times* a weight factor to give consideration to the employer's size or variance of its actual losses.⁶ Thus, WCIS and MIRA have provided the foundation on which to build an experience-based rate making system.

S.B. 250 passed by the 1995 Legislature granted the Division authority under §23-2-4 to develop by rule:

a system for determining the classification and distribution into classes of employers subject to [Chapter 23], a system for determining rates of premium taxes applicable to criteria for subscription thereto, and criteria for an annual employer's statement providing both benefits liability information and rate determination information.

Under this authority, a rewrite of Exempt Legislative Rule §85-9 is being drafted to address underwriting issues and is expected to be released for public comment in November. The proposed rule provides for implementation of a more diverse product line, experience-based rates, receivables management, employer payroll/classification audits, employer classification and other critical underwriting matters. The Division had originally planned to finalize this underwriting rule in two phases. However, the first phase of this rule was released and subsequently

⁶ This is a highly simplified illustration of how modification factors are calculated by the Workers' Compensation Division's methodology.

TABLE 5
Insurance Products Under Consideration

Plan Type	Description
<i>Assigned Risk Plan</i>	Employers with substandard performance levels are assigned to this plan and additional premium taxes are imposed on them. Purposes for the assigned risk plan include encouraging employers to improve their performance and allowing high risk employers to share their losses with other high risk employers.
<i>Deductible Rating Plan</i>	A plan that allows employers to pay a portion of the lost wages for injured employees up to a specified limit, in exchange for receiving a discount on their premium.
<i>Group Rating Plan</i>	A plan that modifies a group of employers' base rates based on the claims experience of the group. Employers retain separate risk identity, but are pooled and grouped for rating purposes only, specifically with respect to experience modification.
<i>Guaranteed Cost Plan</i>	Similar to conventional subscriber plan. The employer receives coverage for a fixed premium, determined by class of employment and experience modification.
<i>Retrospective Rating Plan</i>	A loss-sensitive rating option which allows an employer to pay premiums based on losses. At the end of the retro-rated policy year, the employer faces either a refund or additional premium based on losses. The amount an employer can gain depends on the employer's capacity to pay.
<i>Self-insurance Plan</i>	Plan allows employers meeting certain qualifications to insure their own compensation and catastrophic risk.
Source: Workers' Compensation Division.	

Conclusions and Recommendations

Although much work remains to be completed to bring the underwriting/rate making/risk management vision to fruition, *the Division's aggressive approach in re-inventing its underwriting/rate making/risk management structure is commendable.* While the goal of experienced-rated premiums is yet to be obtained, the breadth of the Division's plan to address the concerns raised by E & Y in 1992 vastly exceeds the recommendations of the final draft management letter.

Reported to Joint Committee on Government Operations

September 15, 1996

Organizational Structure and Personnel Requirements

The 1992 Final Draft Management Letter notes, "Management believes that a major contributing factor to the material weaknesses in the internal control structure is the overall lack of qualified personnel, both in numbers and in strategic placement within the organization." In addition, the management letter specifically identified the need for improvement in the human resources as well as organizational components relating to a number of key business functions of the Division. The areas of concern included the need for a controllership function, an actuarial function as well as attention to staff in accounting, underwriting, claims processing, premium billings, quality review, internal audit and information systems.

Attention to structure and personnel in an organization helps to establish and clarify lines of authority and responsibility. Second, proper organizing and staffing helps management in their efforts to improve efficiency and quality of the day to day work of the Division. Third, good organization provides for an environment with open and effective communication. Finally, a properly designed organizational structure and adequate human resource pool allows for optimal division of labor. As a result of successful efforts in these areas, the Division should benefit from more efficient and effective operations with fewer skills required per person, work proficiency, the ability to have concurrent operations, more conformity in the final work product and ease in recruitment and training. This section of the report measures the compliance with organizational and staffing recommendations made by Ernst and Young.

ISSUE AREA 9: ACCOUNTING DEPARTMENT IS GROSSLY UNDERSTAFFED

Level of WCD Compliance: IN COMPLIANCE

The 1992 Final Draft Management Letter noted that the Division's accounting department "consists only of two bookkeepers." Today the Financial Accounting Section is staffed up to a level of 12 employees, excluding the vacant accounting director position (the Division has posted the position and is proceeding with the hiring process).

Analysis

Financial Accounting is in place to provide for the day-to-day functioning of the accounting system. Examples of such operating responsibilities are financial reporting, monitoring and preparing investment of funds, and designing and implementing cash controls. Employees of Financial Accounting also provide consultation to management on issues requiring technical research. Financial Accounting has also functioned as an internal audit group on four occasions (see ISSUE AREA 16 for more information on the internal audit function).

The Financial Accounting staff is highlighted in TABLE 6. The director position became vacant June 24, 1996, and a replacement has not yet been made. The educational qualifications of existing staff include 5 accounting professionals with baccalaureate degrees, four of which are Certified Public Accountants, one employee working toward a baccalaureate degree in accounting (86 credit hours completed), and 5 of the remaining 6 employees have completed training beyond the high school level. The unit also has considerable work experience (see TABLE 6).

Interviews of Financial Accounting staff members provided insight into the adequacy of the unit's staffing level. Some staff members felt that the section could use more clerical support and expressed sentiments that work flows could be allocated more equitably. In addition, the Special Claims sub-section expressed concern that additional responsibilities will be imposed on its staff of four. However, from staff interviews, it is readily apparent that the staff is adequate to meet more than the basic needs of the accounting system. Outputs of the Financial Accounting staff have also been reviewed throughout the course of the audit. In general, the outputs of the unit are of a high quality. Activity reports and direct observation indicate that essential accounting functions are being met and many special projects are being pursued. In sum, interviews, outputs, activity reports, and direct observation of the unit indicate that Financial Accounting has a sufficient number of qualified professionals. However, a considerable work backlog exists within the sub-unit of the section known as "Special Claims."

Among the sub-unit's responsibilities is the duty for recording credits for certain transactions, specifically returned or refunded checks for medical benefits, returned or refunded

checks for benefits overpayments, and *Financial Accounting checks*.⁷ The Special Claims Unit was created in May 1996 to provide for the recording of these credits and to manage the outstanding credit backlog which accumulated while under the responsibility of the Claims Managers.⁸ As of July 29, 1996, Performance Evaluation and Research Division's audit staff noted that the outstanding credits dated back as late as October 4, 1994. Financial Accounting's approach toward managing this backlog has been to process all in-coming work first, thus preventing further growth of the backlog, and pursue the remaining backlog when time allows. Employees of the Special Claims section believe that the backlog can be eliminated in two to three months if given priority by management.

The backlog has the effect of making certain injuries appear to be more costly than they really are. This causes employers' premium rates to be somewhat higher than they would be had the credits been properly recorded. Because the Division has yet to implement a meaningful experienced-rated rate making system, as discussed in ISSUE AREA 7, and because Ernst and Young provided an unqualified opinion on the Division's FY 1995 financial statements, it is unlikely that the resulting premium errors are material to this review. However, it is of paramount importance that the Division ensure the integrity of its premium rates by maintaining current financial information.

Conclusions and Recommendations

Staffing of the Financial Accounting section has improved vastly since 1992. However, management should work quickly to find a qualified Financial Accounting Director (Controller, see ISSUE AREA 10). Management should also aggressively pursue elimination of the outstanding credit backlog. The backlog should be closely monitored and alternative resolution strategies should be considered, if warranted.

⁷ *Financial Accounting checks are checks that were issued by the Division to itself to cope with limitations of the legacy computer system. With the implementation of the new computersystem (WCIS), this practice has ceased, though a backlog of old outstanding credits remains.*

⁸ *Between April 1994 and the present the Division has been implementing a massive reorganization project whereby the Division's focus has changed from a "claims processing" or task-oriented approach to a "claims management" or claim-oriented approach. It was originally planned that Claims Managers would be posting these credits to accounts, as well as, managing the other aspects of each claim. As the work flows evolved, these postings were not being completed and the backlog mounted.*

ISSUE AREA 10: THE DIVISION SHOULD ESTABLISH A CONTROLLERSHIP FUNCTION

Level of WCD Compliance: IN COMPLIANCE

The Division has fulfilled the controllership function through establishment of the Director of Financial Accounting position. However, controllership responsibilities are somewhat of a shared responsibility with respect to computer controls. A WCIS (Workers' Compensation Insurance System) Review Committee has been established to design, maintain and implement computer controls.⁹ The Director of Financial Accounting position was vacated June 24, 1996 and has not yet been filled (the Division has posted the position and is proceeding with the hiring process).

Analysis

As defined by Ernst and Young (E&Y),

The controllership function accounts for the design, installation, operation, and control of a unified financial management information system. Such a system would coordinate the financial systems of the operating divisions and identify missing links or duplication of efforts in the Fund's financial accounting system.

The position description for the Director of Financial Accounting (Financial Reporting Specialist III) closely mirrors the E & Y definition (see APPENDIX 4 for full job description).

Under limited supervision, performs professional accounting work at the advanced level overseeing a wide variety of complex statewide financial systems and financial reporting services. Plans and directs internal and external meetings related to financial reporting or systems work. Designs and reviews procedures to be followed in staff performance of accounting or systems tasks. May supervise and review work of Financial Reporting Specialists and other staff. Performs specialized work in areas such as preparation of governmental financial statements, issuance of statewide policy statements related to systems or financial reporting, technical research, training, design, developing and implementation of statewide accounting system. Performs related work as required.

A WCIS Review Committee has been established to review requests for systems changes. Members of this Committee include the Executive Assistant (to the Executive Director), who serves as chair, and eight departmental Directors (including the Director of Financial Accounting, who serves as vice-chair). The Committee is charged with prioritizing all change requests for the Software Manager and ensuring that the most meritorious change requests are implemented.

⁹ WCIS or the Workers' Compensation Insurance System is a client-server computer system and represents an integral part of the Workers' Compensation Division's financial management system.

ISSUE AREA 11: THE DIVISION SHOULD HIRE A QUALIFIED IN-HOUSE ACTUARY

Level of WCD Compliance: IN DISPUTE

The Division has not hired an in-house actuary. All actuarial services are being provided under contract with Milliman and Robertson, Inc. Management is currently considering hiring an Actuary-in-training and has drafted a tentative position description to that end.¹⁰

Analysis

Actuaries are individuals who calculate insurance and annuity premiums, reserves and dividends, as well as provide high level mathematical and statistical analyses relating to the operation of insurance entities. There are two broad categories of actuaries. One group is trained and qualified to provide analyses relating to life and health insurance, pensions and investments. A second group is trained and qualified to provide analyses of casualty issues such as workers' compensation. Further, there are two types of certificates (for both groups), an Associate and a Fellow. The current contract for actuarial services with Milliman and Robertson became effective during FY 1995, and is due to expire March 31, 1997. There are no remaining renewal options, however, the Director of Purchasing has the authority to extend the contract. The Division has not yet submitted an RFP (request for purchase) for future actuarial services nor has an actuary been hired. Under the current contract, the maximum charges by Milliman and Robertson totaled \$741,600 by FY 1997 (see TABLE 7).

TABLE 7	
Contract for Actuarial Services	
State Fiscal Year	Maximum Charge
FY '95 (7-1-94 to 6-30-95)	\$247,200
FY '96 (7-1-95 to 6-30-96)	\$247,200
FY '97 (4-1-96 to 3-31-97)	\$247,200
Total	\$741,600
Source: Milliman and Robertson contract and change orders.	

TABLE 8 provides a breakdown of how the actuarial work is allocated by the consultant. TABLE 8 is based on the "Schedule of Total Professional Fees and Expenses for Casualty Actuarial Consulting and Analytical Services" included in the vendor's original bid. The original

¹⁰ In some cases, a plan to hire an individual, if sufficiently documented, could constitute a "Planned Compliance." However, if management were to hire an Actuary-in-training it would only constitute a "Partial Compliance" with the E & Y recommendation to hire a qualified actuary, hence the "In Dispute" score.

save \$56,001 per year over the current contract (\$247.2M-\$125M-\$26.199M-40M=\$56.001M) and have a well-qualified FCAS in-house for the entire year, or 1.8 times as many hours provided by Fellows and Associates of the consulting group combined. The value of the additional work that could be completed by a full-time in-house actuary is unquantifiable. In addition, because fees would no longer be paid to hire consultants from California if services are provided in-house, state businesses, workers and tax bases would reap the benefits of the multiplier effect. (If the money multiplier is assumed to be 7, spending \$247,200 to staff an in-house actuarial services unit would result in \$1,730,400 in economic activity).

Management is considering hiring an Actuary-in-training to perform certain actuarial functions

including class rates, reserves, merit ratings, self-insurance buyouts, preparation of actuarial inputs to financial statements, **assistance to the consulting actuary**, preparation of studies and analysis in loss costs and cost estimates, and assistance to other processes (emphasis added by Performance Evaluation and Research Division).

The candidate is to have a minimum of one to three years experience in casualty actuarial projects for insurance or consulting firms; a bachelor's degree in mathematics, statistics, or related field; passage of a minimum of three (of a possible ten) examinations of the Casualty Actuarial Society (CAS); and intention to complete Fellowship in CAS. In addition the MIRA system (Micro Insurance Reserve Analysis) will provide for the automation of case reserving and other tasks, which have been traditionally performed by the Division's consulting actuary. Perhaps a para-professional will be able to perform many of the tasks currently outsourced to Milliman and Robertson, given the new tools available, i.e. WCIS and MIRA.

Conclusions and Recommendations

While there may be occasions when it is necessary to hire a consulting actuary on contractual bases, for example to obtain a second opinion on the work of an in-house actuary when considering an important policy matter, management should conduct a study of the costs and benefits of developing an actuarial presence within the Division. Possible barriers to the Division may include classifying, compensating and recruiting a qualified actuary. However, having an actuary involved in the day-to-day operations of the Workers' Compensation Division could yield unprecedented benefits. Few insurance entities of the Division's size and complexity operate without an in-house actuary. Funds expended to retain either Senior FCAS for just 15 weeks may be sufficient to cover the salary of an in-house FCAS for an entire year. ***The Division should report the results of its study and plan for action to the Joint Committee on Government Operations at its January 1997 interim meeting.***

ISSUE AREA 12: THE DIVISION SHOULD EVALUATE ITS HUMAN RESOURCE POOL

Level of WCD Compliance:

PARTIAL COMPLIANCE

The Division regularly conducts employee performance evaluations and with the assistance of consultants has performed detailed human resource studies of several of its functional units. In addition, management performed a study of the attitudes and abilities of its mid-level managers, identified critical human resource needs in terms of delivering its vision, and identified personnel needs associated with the implementation of S.B. 250. While the Division has complied with this objective at an organizational level, it lacks a comprehensive Division-wide assessment of its human resource skills at the individual employee level.

Analysis

Along with Division-wide employee performance evaluations, the Division has made detailed studies of the personnel of its Financial Accounting Department and Claims Teams. The effort put forth on the Financial Accounting and Claims Teams projects serve as good examples of what the Ernst and Young Final Draft Management Letter recommended

Because of the magnitude of the problem, the Fund's **existing human resource pool must be evaluated in terms of current and future personnel requirements to facilitate the orderly development of qualified people in all critical functional areas**, most notably accounting, underwriting/risk analysis, claims processing, premium billings, quality review, internal audit and information systems (emphasis added by Performance Evaluation and Research Division).

Management has provided evidence that other TQI (total quality initiative) deliverables similar to those for Financial Accounting and Claims exist for the topics of Receivables Management and Technology. The groundwork for the TQI program was the Issues Confirmation project which provided organizational-level evaluation of the human resource pool, as did the Division's Vision Document, and other efforts. In addition, executive management completed an evaluation of the attitudes and skills of its middle managers.

The Division also has a process for conducting common employee performance evaluations. Supervisors solicit self-evaluations of employees and conduct their own assessments of employee performance on Bureau of Employment Programs rating forms. The forms are forwarded for the Executive Director's review and sent to the Bureau's Personnel Office to be filed. While the forms may contain useful information, the format of the information does not readily lend it to recruitment and training uses. In addition, the information is geared to measure performance in current job, not the employee's skill-set and potential in other capacities.

Except for the individual level analyses completed for a few of the Division's functional areas, middle management, and employee performance evaluations, detailed evaluations of the organization's individual employees have not occurred. A Division-wide baseline analysis of employee skills in the various business areas of the Division would help to develop a more

ISSUE AREA 13: THE DIVISION SHOULD CREATE A PROGRAM FOR ORDERLY STAFF DEVELOPMENT

Level of WCD Compliance:

PARTIAL COMPLIANCE

The Division's Training Department has been actively engaged in staff development programs. A minimum goal of 40 hours of training per employee per year was established by a training plan implemented in 1994. Traditionally, the Division's approach to training has been delivering on a "just-in-time" basis. Much of the training completed has occurred in the critical functional areas outlined in the Final Draft Management Letter. A score of "Partial Compliance" has been awarded because of the lack of a Division-wide inventory of individual skills and deficiencies to guide the development effort (see ISSUE AREA 12). *Lack of such a baseline has caused the Division's training program to be more reactive to problems and changes than proactive to needs. In addition, training efforts have waned during the first 7 months of 1996* (see TABLE 9).

Analysis

In 1994 the Division implemented a training plan that established a minimum goal of 40 hours of training per employee per year. Training topics considered were:

skill and knowledge needed to effectively and efficiently perform assigned duties in accordance with the Bureau's mission, core principles, and goals;

total quality initiatives which require staff to learn and adapt to new ways of operating and interacting to create a total quality environment; and

inconsistencies or inadequacies in performance identified by managers and/or line staff.

The Division has maintained a training database for each calendar year 1994-present. The database includes each employee's record of all training conducted by in-house staff, consultants, external sources, the Division of Personnel and the Bureau of Employment Programs. The record demonstrates training in many of the functional areas outlined by Ernst and Young as a focus for development activity. TABLE 9 highlights the hours dedicated to training in 1994, 1995 and the first seven months of 1996.

According to the data provided by the Division, the training effort was strong in 1994, peaked in 1995, and dropped sharply in 1996. If the 1996 training pace remains constant for the remainder of the year, employees of the Division will be expected to average only 6 training hours for the entire year, down from the average of the previous year by 39 hours.¹²

¹² *The 1996 data may have its limitations, however. There is a lag between the time training occurs and the time training is recorded in the database. Occasionally employees forget to notify the Director of Training of completion of a program, which is usually resolved by Training Director's cross checking training requests with training reported and following-up appropriately.*

ISSUE AREA 14: THE DIVISION SHOULD ACTIVELY RECRUIT SKILLED EMPLOYEES

Level of WCD Compliance: IN COMPLIANCE

The Workers' Compensation Division has actively recruited skilled employees to fill several vacant positions by advertising in major state newspapers.

Analysis

The Division has advertised for 4 vacant professional-level positions. The advertisements were carried in various newspapers. See TABLE 10 for newspapers selected to advertise vacant positions.

TABLE 10 Employment Advertisements					
Newspaper(s)	City	Vacant Position			
		#1	#2	#3	#4
<i>The Journal</i>	Martinsburg		X	X	X
<i>Charleston Newspapers</i>	Charleston	X	X	X	X
<i>Wheeling Intelligencer News</i>	Wheeling		X	X	X
<i>The Herald-Dispatch</i>	Huntington	X	X	X	X
<i>Exponent-Telegram</i>	Clarksburg		X	X	X
<i>Bluefield Daily Telegraph</i>	Bluefield			X	X
<i>Beckley Newspapers</i>	Beckley		X	X	X
<i>Herald Mail</i>	Hagerstown, MD			X	X
Source: Advertisements and RFPs supplied by Bureau of Employment Programs Personnel Office					

Executive management of the Division has provided audit staff with copies of correspondence requesting the Personnel Office of the Bureau of Employment Programs to advertise 12 other vacant positions.

ISSUE AREA 15: THE DIVISION SHOULD CREATE FORMAL JOB DESCRIPTIONS, INCLUDING RESPONSIBILITIES AND EXPERIENCE REQUIREMENTS

Level of WCD Compliance: IN COMPLIANCE

The Bureau of Employment Programs maintains a Personnel Policy and Procedures Manual which includes a generic Division of Personnel position description for each job title held by the Bureau. These descriptions include job responsibilities and required credentials.

Analysis

A sample of 3 positions from the FY 1997 personal services expenditure schedule was cross-checked with the job descriptions contained in the Bureau of Employment Programs Personnel Policy and Procedures Manual to ensure the document is up-to-date. The positions were selected by audit staff on the basis of being relatively new positions. The Personnel Policy and Procedures Manual contained position descriptions for each new position sampled. In addition, many of the position descriptions were dated March 21, 1996, indicating the manual is up-to-date. Further, the Division has also created its own job-specific job descriptions for employees of the Division.

Conclusions and Recommendations

Management should continue to maintain the Personnel Policy and Procedures Manual and job-specific job descriptions.

ISSUE AREA 16: THE DIVISION SHOULD ESTABLISH AN INTERNAL AUDIT SECTION REPORTING DIRECTLY TO THE COMMISSIONER OR EXECUTIVE DIRECTOR

Level of WCD Compliance:

PARTIAL COMPLIANCE

The Division has provided for limited internal audit projects through its Financial Accounting unit and the Bureau of Employment Programs' Management Analysis unit. However, neither unit provides regular, ongoing internal audit services. To the extent these units do conduct audit activities, the nature of the work is often consistent with "quality control" versus traditional internal audit work for the Division.

Analysis

A considerable amount of quality audit activity has been occurring at the Division over the past few years. Most audit services have been provided by consultants. However, the Financial Accounting section of the Division and the Management Analysis section of the Bureau of Employment Programs have contributed limited internal audit services. Yet, no portion of either entity exists for the exclusive purpose of providing internal audit services.

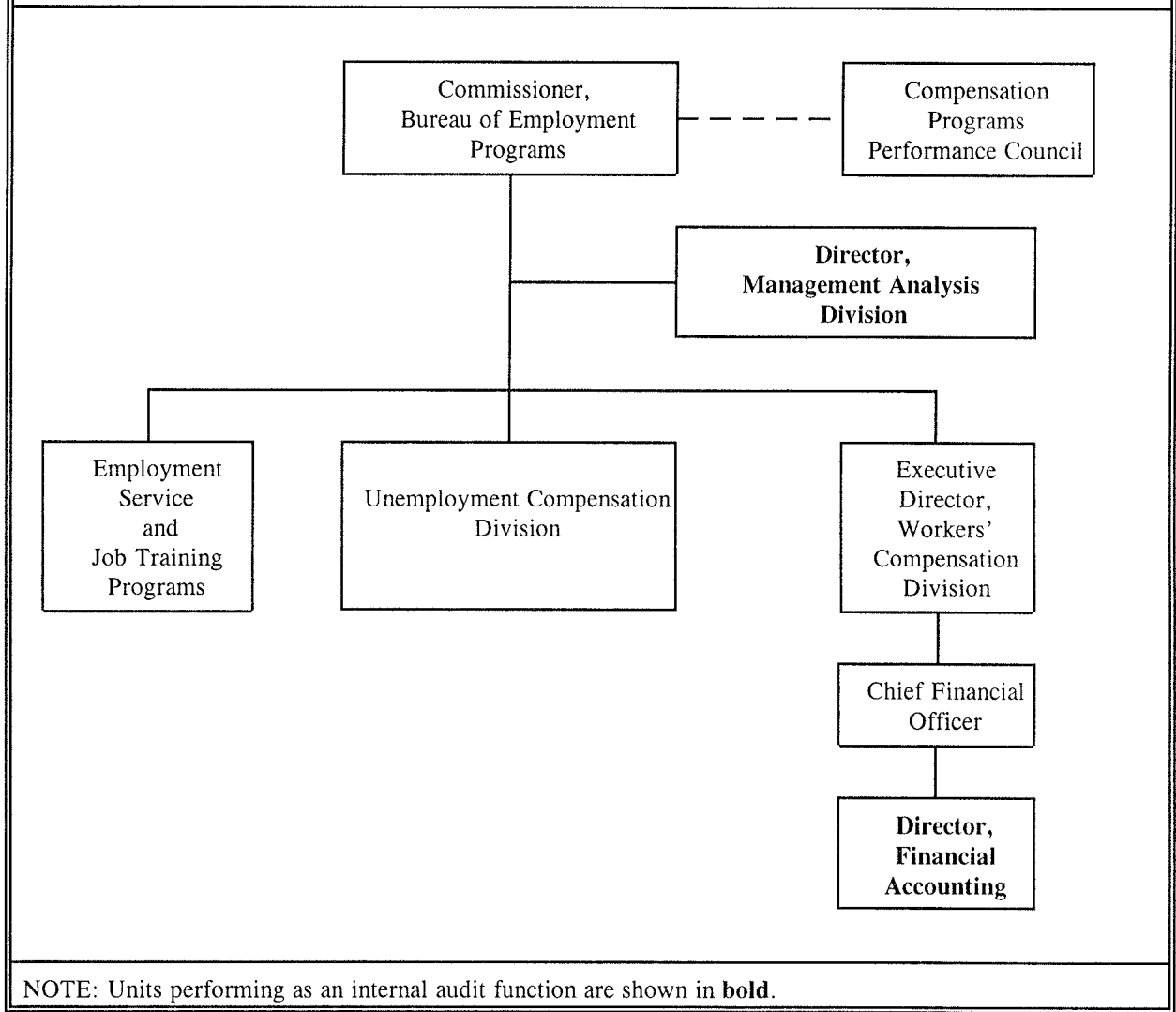
Both Financial Accounting and Management Analysis have qualified personnel for these activities. However, their resources are also committed to other concerns. For Financial Accounting, it is the day-to-day operation of the accounting system and technical research projects. Management Analysis performs certain regular quality control functions, and dedicates some of its resources to each Division under the Bureau of Employment Programs.

To date, Financial Accounting has conducted 3 audits since the section's reorganization in June 1995. These audits consisted of a payroll review to ensure that paychecks were only being issued to active employees, a review of Temporary Total Disability calculation procedures and a mailroom audit which involved the study of work flows and other concerns. The Financial Accounting section also developed a list of 10 potential audit objectives and time estimates for completion of each objective. Of the 10 potential audit objectives, 2 are among the 3 completed by the Division. The remaining 8 have not been ordered.

Management Analysis has conducted a greater number of audits of the Division. Most of the work conducted is field office quality control reviewing. The unit has an audit guide containing several programmed audit tests. These tests involve ensuring

- all equipment has appropriate inventory tags,
- the physical security of computers and other office equipment,
- safety of work areas and compliance with OSHA,
- timeliness of supervisory visits,
- proper maintenance of bulletin boards,
- adequacy of building accessibility,

TABLE 11
Organizational Placement of Internal Audit Functions



Conclusions and Recommendations

Management should develop an internal audit function. This function should be distinct from quality control functions, and should answer directly to the Commissioner, Executive Secretary or the Compensation Programs Performance Council. Work should be conducted in compliance with Generally Accepted Government Auditing Standards (GAGAS) or American Institute of Certified Public Accountants (AICPA) standards.

Financial Statement Reporting

Annual financial statements are documents prepared to provide information to both internal and external users. Internal users include members of management (Governor, Commissioner, Executive Director, etc.) and other employees and boards and commissions having control over the entity, such as the Compensation Programs Performance Council. External users include those outside the Division having either a present or potential direct financial interest (Legislature, claimants, employers, attorneys, physicians, etc.) or an indirect financial interest (labor unions, business groups, citizens, etc.).

Within any government, there are a variety of types of funds. For example, there are general operating funds, special funds and enterprise funds. The Workers' Compensation Division is an enterprise fund, which are categorically known as proprietary funds. A proprietary fund's operation is similar to that of a commercial venture where the intent of the entity is that the costs of providing services to the public on a continuing basis be financed or recovered primarily through user charges. According to Generally Accepted Accounting Principles (GAAP) each of the different governmental fund types must use a particular basis of accounting suitable for that fund type. There are three basis of accounting for the financial performance of an entity: a cash basis; an accrual basis; and the modified accrual. The three vary depending on when financial transactions are recorded. For example, under the accrual basis of accounting, revenues are reported when earned and expenses are reported when incurred.

The Division was required to comply with GAAP in 1991. In order for the Division to comply with GAAP it needed to change from cash based accounting to an accrual system. The 1992 Final Draft Management Letter states that the "necessary records and accrual accounting entries required to produce the financial statements in conformity with GAAP do not exist within the Fund."

ISSUE AREA 17: DIVISION SHOULD MAKE NECESSARY CHANGES TO MOVE FROM CASH BASED ACCOUNTING TO AN ACCRUAL-BASED SYSTEM

Level of WCD Compliance:

IN COMPLIANCE

Ernst and Young issued an unqualified opinion on the combined financial statements for FY 1995. In the accompanying notes Ernst and Young *confirmed* the use of an accrual-based accounting system.

Analysis

In a cash-based accounting system, expenses and revenues are recognized when a payment is made or cash is received. Conversely, an accrual-based accounting system recognizes expenses and revenues when incurred or realized. The notes accompanying the audited financial statements include,

As an enterprise fund, the Division uses the accrual basis of accounting. Under this method, revenues are recorded when earned and expenses are recorded when incurred.

Conclusions and Recommendations

The Division should continue its compliance with Generally Accepted Accounting Procedures (GAAP) by using accrual-based accounting.

PART II - INTERNAL CONTROLS

Internal controls have a number of components. First, internal controls include the agency's objectives or the positive effects that management is trying to obtain. Second, internal controls include the procedures used to provide reasonable assurance that: goals and objectives are being met; resources are being adequately safeguarded and efficiently used; reliable data are obtained, maintained and fairly disclosed in reports; and laws and regulations are complied with by agency personnel. Third, the agency's accounting system is used to identify, assemble, analyze, classify, record and report transactions and maintain accountability for assets, liabilities, revenues and expenses. Finally, internal controls include management's system for monitoring the agency's activities and performance. The need for public accountability and the lack of administrative continuity in government increases the need to have sound systems in place.

Cash and Investments

The Ernst and Young Final Draft Management Letter was written in response to the Division not being "auditable," because of "pervasive weaknesses in internal controls." The management letter addressed and provided many recommendations for improving the control environment. This section of the report measures the Division's compliance with respect to internal controls.

ISSUE AREA 18: THE DIVISION SHOULD PROVIDE FOR ADEQUATE SEGREGATION OF DUTIES FOR CASH TRANSACTIONS

Level of WCD Compliance:

PARTIAL COMPLIANCE

The Division has resolved the internal control issues related to segregation of incompatible duties, as addressed in the 1992 Final Draft Management Letter. However, new segregation of duties concerns have been conceived with the reorganization of Benefits Management. The new claims management approach involves one person having direct contact with claimants and employers on a regular basis, making compensability decisions and financial recording of benefits. Over the course of this review other cash control problems surfaced.

Analysis

Most of the review was conducted by direct observation of the cash controls system. All segregation of duties concerns raised by E & Y in the 1992 Final Draft Management Letter were found to be vastly improved. With the exception of the responsibilities of the Claims Managers, no conflicting duties were found.

Implementation of a reorganization plan for the current claims management unit began in April 1994. The change shifted the focus from a "claims processing" or task-oriented approach to a "claims management" or claim-oriented approach. The "quarterbacks" of this claims management approach are the Claims Managers. The change has created a situation where each Claims Manager is responsible for: 1) having direct contact with claimants and employers; 2) making compensability decisions; and 3) recording benefit awards. None of these three responsibilities are compatible from a cash control point of view. While claims management may be more efficient and effective than the claims processing approach, it is an inherently weak cash control system.

When it is impractical or inappropriate to provide for the segregation of incompatible duties, there must be a robust system of controls to counterbalance the conflict. Management has worked to address the problem through WCIS (Workers' Compensation Insurance System) controls. For example, the computer system will only allow the Claims Manager assigned to manage a given claim or a member of the same Claims Team, to do any work on that particular claim. WCIS records the Claims Manager's identification number for any action taken on a given claim. Another control requires Claims Managers to enter the employer's policy number before an award can be made. If the employer is unknown or uninsured, the injury will be charged to the I-20 account, which will prompt further investigation. Other computer controls exist. In addition, claimants and employers can appeal the decisions of a Claims Manager and usually will in the event of an unjust ruling. An appeal will prompt a review by the Office of Law Judges. However, because of the weaknesses associated with the lack of segregation of duties of the Claims Manager, these controls are not impervious to employee dishonesty. For example, it may be possible for a Claims Manager to collude with an employer and submit bogus claims. Regular quality control checks of awards made by Claims Managers may be sufficient to remedy the

week, so the OEA employee accepted the check herself. After noticing that the rest of the Financial Accounting staff had also left, the OEA employee gave the check and application to the Director of Financial Accounting to give to the appropriate Financial Accounting employee the following Monday. It is presumed that the Director secured the check in his filing cabinet, since he did not have access to the safe and subsequently forgot about the matter over the weekend. The check was ultimately found in the Financial Accounting activity reports folder, more than five months after it was received. To eliminate the potential for recurrence, the Division should ensure that a cashier be available to properly receive and log checks in the event of a last-minute customer. OEA staff should be instructed to never accept direct payment from an employer. Doing so constitutes a violation of the segregation of incompatible duties and, as this case illustrates, can lead to bigger problems.

Conclusions and Recommendations

Because Claims Managers routinely perform incompatible duties, management should provide for regular quality control reviewing of awards made by Claims Managers. Human review is an essential deterrent to employee dishonesty, a good method for detecting any fraud that may occur, and an excellent way to provide feedback concerning the effectiveness and need for improvement and enforcement of processes and procedures to management. *The Division should report its plan for implementing regular quality control reviews and any other management controls to compensate for the unsegregated incompatible duties of Claims Managers to the Joint Committee on Government Operations at its November 1996 interim meeting.*

The Division should continue with its new control policy to safeguard and provide accountability for daily deposits. The State Board of Investments is in position to provide for statewide guidelines for the handling of its deposits. For example, the State Board of Investments could provide lockbags to all agencies which make physical deposits of cash and checks.

Management should develop and implement appropriate controls over the cashier's cash drawer. In addition, management should ensure that a cashier is available to provide services for last-minute customers. This could be accomplished by either adjusting the work schedules of the cashiers, or development of a policy, providing for employees of the Office of Employer Accounts to notify the cashier prior to 5:00 p.m. to request the cashier to stay late. In addition, employees of the Office of Employer Accounts should be forbidden from accepting payment from employers.

ISSUE AREA 19: THE DIVISION SHOULD TIGHTEN CONTROLS OVER THE MAILROOM

Level of WCD Compliance:

PARTIAL COMPLIANCE

Mailroom controls are notably better than they were at the time the Final Draft Management Letter was issued. A few control problems persist.

Analysis

In the 1992 Final Draft Management Letter, Ernst and Young made several recommendations for improvement of mailroom controls. The recommendations include

- Establishing a single point of entry for all mail which contains a sort room whereby sorters open mail together at one large table or at several tables without drawers.
- Limiting access to the sort room to authorized personnel.
- Continuing the practice of logging all checks for comparison to the bank deposit total.
- Making copies of checks in the sort room for purposes of distribution to the necessary departments (i.e. Employer accounts, Accounting).
- Placing all checks in a locked box along with the Check Control Listing (log) and transferring them to Internal Audit for immediate deposit.

Each of these recommendations is addressed categorically below.

The mailroom, under the control of the Director of Benefits Management, is the single point of entry for all Division mail. Sorters open mail together at one large table area (three adjoining tables in a "T" pattern). The primary sorting tables are located in the center of the room and contain no drawers or other compartments which could provide a convenient cache to an employee wanting to steal a check. The center of the table top contains various binders, books, logs and other clutter related to the work of the mailroom. It is conceivable that an unscrupulous employee could stash a check in the clutter. Materials permitted to be stored on the sorting tables should be limited to bare essentials, such as the Check Control Listings.

Access to the sort room is controlled, but not "off-limits" to unauthorized personnel. The mailroom area has two entry points, an internal door and an external door. Employees of the Division seemed to understand that the mailroom is not a shortcut to the parking lot. However, employees of the Division are allowed to come and go through the interior door when picking-up mail or dropping-off items. In some cases employees are allowed to serve themselves when picking-up mail. The external door was being propped open to provide ventilation and easier access for delivery personnel. However, this practice has ceased since Performance Evaluation and Research Division expressed concerns. Given the volume of checks which are being sorted on the mailroom table, and the many sensitive documents, a higher level of security should be achieved.

The mailroom is maintaining adequate check logs. However, it is apparent that some checks are leaving the mailroom without first being logged. An example is a \$3,766.47 cashier's

Reported to Joint Committee on Government Operations

December 8, 1996

ISSUE AREA 20: THE DIVISION SHOULD PERFORM CASH RECONCILIATIONS ON A MONTHLY BASIS

Level of WCD Compliance:

IN COMPLIANCE

The Division's Financial Accounting Department regularly performs several cash reconciling activities. The addition of five professional accountants has aided this effort (see Issue Area 9).

Analysis

Cash reconciliation activities are principally the responsibility of a designated CPA, who is independent of cash receipts. Examples of some of the Division's cash reconciliation activities include the following: The cash balance as per the West Virginia Financial Information Management System (FIMS) is reconciled with receipted deposit slips from the Board of Investments on a daily basis. Monthly statements from the custodial bank are reconciled to the cash control log. Daily reports from the custodial bank detailing lockbox receipts are verified against WCIS (Workers' Compensation Insurance System) reports to ensure that all amounts received by the lockbox have been properly recorded to the Division's computer system; WCIS serves as the Division's accounts receivable subsidiary ledger. The daily deposit advice is reconciled to the custodial bank's daily reports of receipts.

The primary focus of the Ernst and Young (E & Y) issue was the Division's practice of deriving its cash balance from information supplied by the State Auditor. At that time, the cash balance was not maintained by an internal progression, but was merely adjusted to the balance provided by the Auditor's office. The E & Y recommendations were to maintain an internal cash balance and to reconcile that balance to the cash balance reported by the State Auditor. The Division is in compliance with both recommendations. It maintains its cash balance internally by its cash control log and performs reconciliations to the Auditor's balance on a regular basis. In the event of a discrepancy between the cash balance as maintained in the cash control log and the cash balance as reported by the State Auditor, documentation of the discrepancy, adjustment and explanation must be made.

Conclusions and Recommendations

Given the volume of work that must have been required by the two bookkeepers comprising accounting section in 1992, it may not have been possible for them to maintain an internal cash balance and perform many cash reconciliation activities. The increase in Financial Accounting staff has made a system of meaningful cash reconciliations possible (see Issue Area 9). The Division currently lacks a general ledger system to link the various subsidiary ledgers of WCIS. A general ledger is the core of the accounting system which enables improved automation in the recording, reconciling and reporting of financial information. Procurement of a general ledger system could enhance the cash reconciliation function.

ISSUE AREA 21: THE DIVISION SHOULD IMPLEMENT AN INVESTMENT QUALITY REVIEW FUNCTION

Level of WCD Compliance:

IN COMPLIANCE

Traditionally, the primary responsibility for investment quality review has been vested with the Director of Financial Accounting, a position which has been vacant since June 24, 1996. However, employees of Financial Accounting as well as the CFO and executive management are maintaining the investment quality review function. All of the responsibilities identified by Ernst and Young are being met, and a score of "in compliance" has been awarded. However, there is considerable room for improvement with respect to the forecasting of the Division's liquidity/cash flow needs.

Analysis

The 1992 Final Draft Management Letter emphasized the importance for the Division's management to understand the "nature of its investment assets, and to monitor the quality of those assets and types of investment transactions," recognizing that the Board of Investments and Trust Fund (Trust Fund inferred) have professional analysts to *manage* the Division's assets. At the time the Final Draft Management Letter was issued the investments of the Division were managed as a portfolio of individual investments, requiring extensive disclosure under Governmental Accounting Standards Board (GASB). Currently the Division's investable assets are pooled with the assets of the various retirement funds, and are considered to be a part of a mutual fund which does not require the financial disclosures of the previous method. *Nonetheless it is important for the Division to maintain this review function, to provide checks and balances and improve investment performance through active participation.* Ernst and Young delineated the responsibilities for the review function as follows:

- Gain an understanding of the West Virginia Code and State Board of Investments [Trust Fund inferred] rules and regulations governing the investment of the Fund's monies.
- Review and evaluation of the monthly and annual financial information provided by the SBI to be knowledgeable of the Fund's investment portfolio and related activity.
- Review of quarterly reports issued by investment analysts evaluating the performance of the Fund's investments and investment advisors.
- Periodic meetings with SBI personnel to discuss the Fund's liquidity needs and cash flow forecast.
- Review of annual SBI audited financial statements and other audit reports addressing internal controls utilized by significant third-party systems holding SBI funds.

Examination of Division's records provided ample evidence that these objectives are being met. Among documents reviewed were interoffice memorandums concerning aspects of investment performance and administration, meetings/conversations with investment center staff members, and response to information requests made by investment center staff; notes/minutes/handouts from meetings of the investment center; internal reports on performance of investments; correspondence with investment centers; relevant newspaper articles from a local source and *The Wall Street Journal*; information from investment advisors and independent

ISSUE AREA 22: THE DIVISION SHOULD MODIFY ITS HANDLING OF INTERGOVERNMENTAL TRANSACTIONS TO PROVIDE FOR TIMELY RECORDING AND ELIMINATE MAILING OF INAPPROPRIATE DELINQUENCY STATEMENTS TO STATE AGENCIES

Level of WCD Compliance:

IN COMPLIANCE

The Division has changed its method of processing Intergovernmental Transactions (IGTs) thereby eliminating the problems reported by Ernst and Young.

Analysis

In the 1992 Final Draft Management Letter, Ernst and Young reported a situation where the accounting department was recording IGT premium payments based on a monthly IGT listing provided by the State Auditor, while Employer Accounts was waiting for receipt of the "encumbered IGT" before posting the receivable to its subsidiary ledger. This led to a situation where the receivable balance in the subsidiary ledger was overstated by the sum of the IGTs which had not been posted to relieve the receivable. As a result, state agencies were sent inappropriate delinquency notices.

The Division is now using an entirely different process. Under the new process, an employee of Financial Accounting performs an inquiry on WVFIMS (Financial Information Management System) to obtain a listing of IGTs received each day. He then sends a copy of the listing to another employee of Financial Accounting and an employee of Employer Accounts to make their respective postings. Because both employees are working from the same very current information, IGTs are being recorded promptly.

Conclusions and Recommendations

The current process has eliminated the problem.

ISSUE AREA 23: THE DIVISION SHOULD CREATE A CENTRAL CONTRACT FILE

Level of WCD Compliance:

IN COMPLIANCE

The Bureau of Employment Programs is maintaining a Central Contract File at 4401 MacCorkle Avenue, Charleston.

Analysis

The Bureau's central contract file is maintained within two rooms of the facility at 4401 MacCorkle. The files are indexed in a dBASE III file with fields including the date of contract, type of service provided, cost center by identification number and location, estimated cost, account number, applicable fiscal year, vendor name, vendor contact, FEIN, actual cost, rate per unit of activity, comments, and other internal codes. Employees work from expiration date field to alert management of actions to be taken.

In addition to the Bureau's central contract file, Financial Accounting maintains a contract file within its office space at 4700 MacCorkle. Financial Accounting's contract file is organized by vendor, purchase order number, type of contract (i.e. maintenance, services, purchases, etc.), item/description, cost center by name and number, purchase order/change order number, date printed and cost.

Conclusions and Recommendations

The Bureau's central contract file is satisfactory. Management may want to consider converting dBASE III files to a more modern relational data base and initiating a tickler file for important contract dates to ensure adequate time to make decisions about such matters as options and renewals.

APPENDIX 1

Funds Administered by the Division

Workers' Compensation Fund:

Consists of premiums, deposits, the Coal Workers' Pneumoconiosis Fund Transfer Reserve and earnings thereto, and any other moneys or funds which may be given, appropriated or otherwise designated or accruing thereto. Disbursements include medical, temporary and permanent partial, permanent total, fatal, and miscellaneous disability benefit payments (i.e. attorney, funeral, etc.), as well as salaries and other expenses related to the fund's administration.

Surplus Fund:

Funding from a percentage of premiums paid into the Workers' Compensation Fund and certain interest earnings attributable to the Surplus Fund. The Surplus Fund consists of three reserves, Catastrophic, Second-Injury, and the Supersedeas Reserve. The Supersedeas Reserve was established to cover losses resulting from overpayments and benefits paid for injuries later ruled to be non-compensable, which, as required by statute §23-4-1c(I), can only be recovered from claimants by withholding future permanent partial disability benefits.

Coal Workers' Pneumoconiosis Fund:

A fund created to insure the liability of employers subject to the provisions of Title IV of the Federal Coal Mine Health and Safety Act of 1969. Consists of premiums and other funds paid thereto by employers.

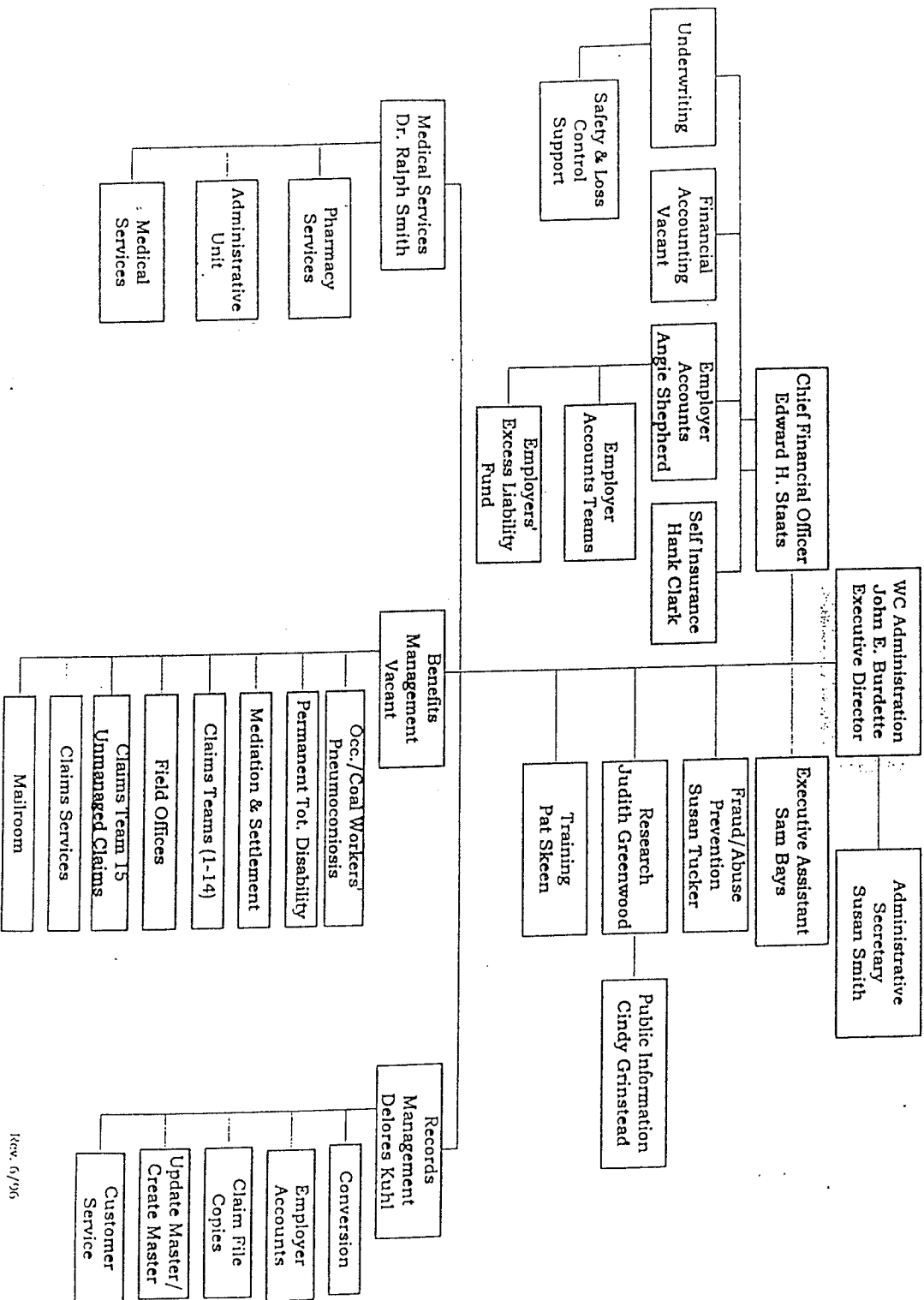
Disabled Workers' Relief Fund:

Funding by transfer of certain interest earnings of the Workers' Compensation Fund and an assessment from self-insured employers. The fund provides relief to persons who are receiving benefits pursuant to a permanent total disability or death benefit awards in amounts less than 33-1/3% of the average weekly wage for the State per month.

Employers Excess Liability Fund:

A voluntary insurance product established to provide coverage for employers who may be subjected to liability for excess damages over the amounts received or receivable under the statute. Funding by employers who elect to subscribe.

West Virginia Workers' Compensation Division



APPENDIX 3
Agency Response

Agency's Response to Issue Areas 1-8

Bureau of Employment Programs
112 California Avenue
Charleston, West Virginia 25305-0112

Gaston Caperton, Governor
Andrew N. Richardson, Commissioner
of Employment Programs



July 9, 1996

Mr. Antonio Jones, Ph.D., Director
Performance Evaluation and Research Division
West Virginia Legislature
Building 5, Room 75 1A
1900 Kanawha Boulevard East
Charleston, West Virginia 25305-0592

Dear Dr. Jones:

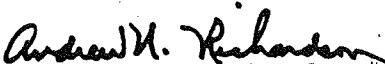
Thank you for sharing with us a copy of the Performance Evaluation of Workers' Compensation, which you plan to report to the Joint Committee on Government Operations at the July interims.

We have reviewed the draft report, and are in agreement with the substance of the conclusions and findings contained in that report. There are some minor factual points that need clarification such as on Page 12 in the 2nd paragraph in the section entitled "Analysis", there have actually been 13 applications processed since the conversion to the new process. This same item appears on Page 17 in the 1st paragraph.

We believe it is important to point out that the revised Self-Insurance process has resulted in an improvement in the division's balance sheet in the amount of \$9,954,000. In addition, the surety held has increased by \$32,000,000. It is also important to note that we have concentrated our efforts in the surety area on those accounts that have been identified as being in the "extreme financial risk" classification.

We have enjoyed the working relationship and the objective review of this program area, and look forward to continuing this relationship through the remainder of the audit.

Sincerely,


Andrew N. Richardson
Commissioner

Agency's Response to Issue Areas 9-19

Bureau of Employment Programs
112 California Avenue
Charleston, West Virginia 25305-0112

Gaston Caperton, Governor
Andrew N. Richardson, Commissioner
of Employment Programs



September 6, 1996

Antonio Jones, Ph. D., Director
Performance Evaluation and Research Division
West Virginia Legislature
Building 5, Room 75 1A
1900 Kanawha Boulevard East
Charleston, West Virginia 25305-0592

Dear Dr. Jones:

Thank you for sharing with us a copy of the Performance Evaluation of the Workers' Compensation Division, which you plan to report to the Joint Committee on Government Operations at the September interims.

We are generally in agreement with the substance of the conclusions and findings contained in the report. Clearly, the Workers' Compensation Division has made significant strides toward improving the effectiveness of our services for West Virginia's injured workers and employers - but much remains to be done. After reviewing the draft report, I am prepared to offer several comments on behalf of the Workers' Compensation Division.

First, regarding hiring an in-house actuary (Issue Area 11), the Workers' Compensation Division disputes the position taken in the 1992 draft management letter that an in-house actuary inherently provides significant operational improvements. The current consulting actuary has served the Workers' Compensation Division for most of the past 15 years, providing a significant level of continuity and institutional memory to the Workers' Compensation Division. This stability has played a major role in the total quality management process that the Workers' Compensation Division has instituted and pursued over the past six years. Nevertheless, the Auditors raise legitimate points on this issue, and the Workers' Compensation Division will aggressively consider a selection of an in-house actuary-in-training as a means of transitioning toward better services in this area. As you know, attracting and retaining highly-qualified staff has been an area of difficulty for the Workers' Compensation Division.

Second, the evaluation of the human resource pool at the Workers' Compensation Division (Issue Area 12) is being pursued as an element of our effort to establish performance measurements. The results of the performance measurements project will provide management with standards to establish a baseline of performance deficiencies to be addressed through targeted training. This accomplishes much of the training needs assessment in a different manner.

Job Service • Job Training Programs • Labor and Economic Research • Unemployment Compensation • Workers' Compensation

Agency's Response to Issue Areas 20-23

Bureau of Employment Programs
112 California Avenue
Charleston, West Virginia 25305-0112

Gaston Caperton, Governor
Andrew N. Richardson, Commissioner
of Employment Programs



December 2, 1996

Antonio Jones, Ph.D., Director
Performance Evaluation and Research Division
West Virginia Legislature
Building 5, Room 75-1A
1900 Kanawha Boulevard East
Charleston, West Virginia 25305-0592

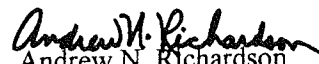
Dear Dr. Jones:

Thank you for providing us with a copy of the Performance Evaluation of the Workers' Compensation Division, which you plan to report to the Joint Committee on Government Operations at the December interims.

We have reviewed the draft report and are in agreement with the substance of the conclusions and findings contained in that report. I would like to comment briefly on Issue Area 21 wherein the evaluators encourage the Division to post and fill the position for a Director of Financial Accounting. We are currently posting this position and it is our intent to fill it in the near future.

We appreciate the professional relationship and the recommendations provided during this audit. We are committed to addressing all issues in the management letter and improving the Division of Workers' Compensation.

Very truly yours,


Andrew N. Richardson
Commissioner