



FY 2022 Annual Report
WV Division of Corrections and Rehabilitation



Jim Justice, Governor
Jeff S. Sandy, CAMS, CFE, Secretary of DHS
William K Marshall III, WVDCR Commissioner



December 2022

Honorable Jim Justice
Governor of West Virginia

Capitol Building
1900 Kanawha Blvd., East
Charleston, WV 25305

Dear Governor Justice,

It is my honor and privilege to submit the Annual Report for the Division of Corrections & Rehabilitation (DCR), for the fiscal year 2021-2022, in accordance with Chapter § 5-1-20 of the West Virginia Code. We hope that this report will serve to illustrate the Division's progress during the year, as well as provide a valuable reference source for DCR statistics and information.

Sincerely,

William K. Marshall III, Commissioner, WVDCR

Table of Contents

Message From the Secretary WV Department of Homeland Security	4
Message From the Commissioner of the Div. of Corrections & Rehabilitation	4
Accomplishments	5-6
Table of Organization	7
WVDCR Facility Locations	8
Commissioner's Biography	9
Deputy Commissioner	9-10
Chief of Staff	10-11
Assistant Commissioner-Bureau of Prisons and Jails	12-17
Assistant Commissioner-Bureau of Community Corrections	17-20
Assistant Commissioner-Bureau of Juvenile Services	21-24
Assistant Commissioner-Training & Staff Development Bureau	25
Assistant Commissioner-Bureau of Intergovernmental Affairs	26-27
Fiscal & Budget Statistics	28
Research Statistics-Adult Sentenced Prisoners	29-36
Research Statistics-Jail Statistics: Convicted Felons, and Misdemeanors, Prison Sentenced Offenders held in Regional Jails, Federal Sentenced, Pre-trial Offenders, Pre-trial Felons and Misdemeanors	37-40
Research Statistics-Juveniles	41-44
Employee of the Year	45
Address/Phone Listings	46-47

(Front Cover, top photo, Potomac Highlands Regional Jail, middle photos left to right, Charleston Correctional Center and Jail, Sam Perdue Juvenile Center and bottom photo, Salem Correctional Center and Jail)

Messages: DHS Cabinet Secretary & WV DCR Commissioner



The West Virginia Department of Homeland Security and the Division of Corrections and Rehabilitation (DCR) are honored to present you with their FY 2022 annual report.

Since 1863, West Virginia corrections have protected our citizens from some of the most dangerous criminals in the world and helped rehabilitate criminals to become productive members of society.

The COVID-19 pandemic has brought new challenges to all West Virginians, especially the important task of safely incarcerating over 10,000 inmates and providing a safe working environment for over 3,400 employees.

The COVID-19 pandemic also caused the resignation of over 500 employees. Governor Justice's leadership to authorize the West Virginia National Guard to support DCR has been greatly appreciated by leadership and the employees of DCR.

Sound leadership includes financial stability. During the past four years DCR has saved West Virginia counties \$99.2 million in their jail bills.

The employees of DCR are the unsung heroes of West Virginia.

Jeff S. Sandy, Cabinet Secretary, CFE, CAMS



This report highlights the work and dedication of the employees of the West Virginia Division of Corrections and Rehabilitation (WVDCR). WVDCR employees have seen a multitude of changes in the last couple of years, from the Correctional Consolidation of 2018 to historic staffing shortages, and the COVID 19 pandemic.

Day in and day out, WVDCR Correctional Officers report to their facility, as well as serve temporary duties at other facilities to ensure safe and secure operations. We must also recognize all the non-uniform staff that fill security posts and facilitate the rehabilitation of the individuals housed within our facilities. The WVDCR is so much more than just walls and fences meant to keep the guilty out of society, through our programs we can help change the path of individuals.

While things continue to change, the WVDCR's mission to enhance public safety, promote offender accountability, and successfully reintegrate offenders into society remains the same.

Within this report, you will be provided an overview of the agency's accomplishments, as well as statistical information for FY 2022. None of this would be possible without the almost 3,000 WVDCR staff who continue to persevere despite constant challenges.

William K Marshall III, Commissioner, WVDCR

WV DCR Accomplishments

Organizational

- In January 2022, the **Bureau of Training and Staff Development (BTSD)** implemented training for newly promoted supervisors. The curriculum covers 14 training modules designed to facilitate a smoother transition to a supervisory role and enhance their work performance. Plans are currently being developed to expand the supervisory training program to include the agency's existing supervisory staff. In 2022, approximately 100 new supervisors have completed this program.
 - A Modified Support Staff Academy Program has also been developed and implemented. This allows Superintendents to schedule eligible support staff employees who meet the established criteria to complete their Basic Training requirements in a shortened timeframe.
- In May 2022, the WVDCR Corrections Academy transitioned from a Regional Academy Training Model and returned to the in-person training format in Glenville, West Virginia. As of this report, 454 employees graduated the Basic Training Program. Additionally, in 2022, 63 returning employees had their certifications reinstated or completed the Basic Training Waiver Program. Although recently numbering in the hundreds, the waiting list for agency employees to be assigned to training has been reduced to 19.
- A social media and outreach plan was developed to promote the DCR and recruitment.
- A Policy Committee was formed that will meet and finalize all recommendations to complete the goal of consolidating agency policies.
- The Sam Perdue Juvenile Center participated in a facility audit for the DCR Energy Performance Contracting Project which is aimed to improve building operations and functionality and to create long term energy savings.

Operational

- The Information Technology Department developed a new process for quicker response time for technical issues, with a group email (DCRITSupport@wv.gov) and a direct phone line: 304.352.2222.
- Most state employees employed as of July 1, 2022, received an across the board pay raise of \$2,550. The DCR proposed to the Board of Personnel that this across-the-board raise be incorporated into the special hiring rates established for Correctional Officer 1 - 3. The Board approved our proposal and beginning July 1, 2022, the new special hiring rates for CO 1-3 are as follows:
 - Correctional Officer 1 - \$33,214, Correctional Officer 2 - \$35,360, Correctional Officer 3 - \$37,656

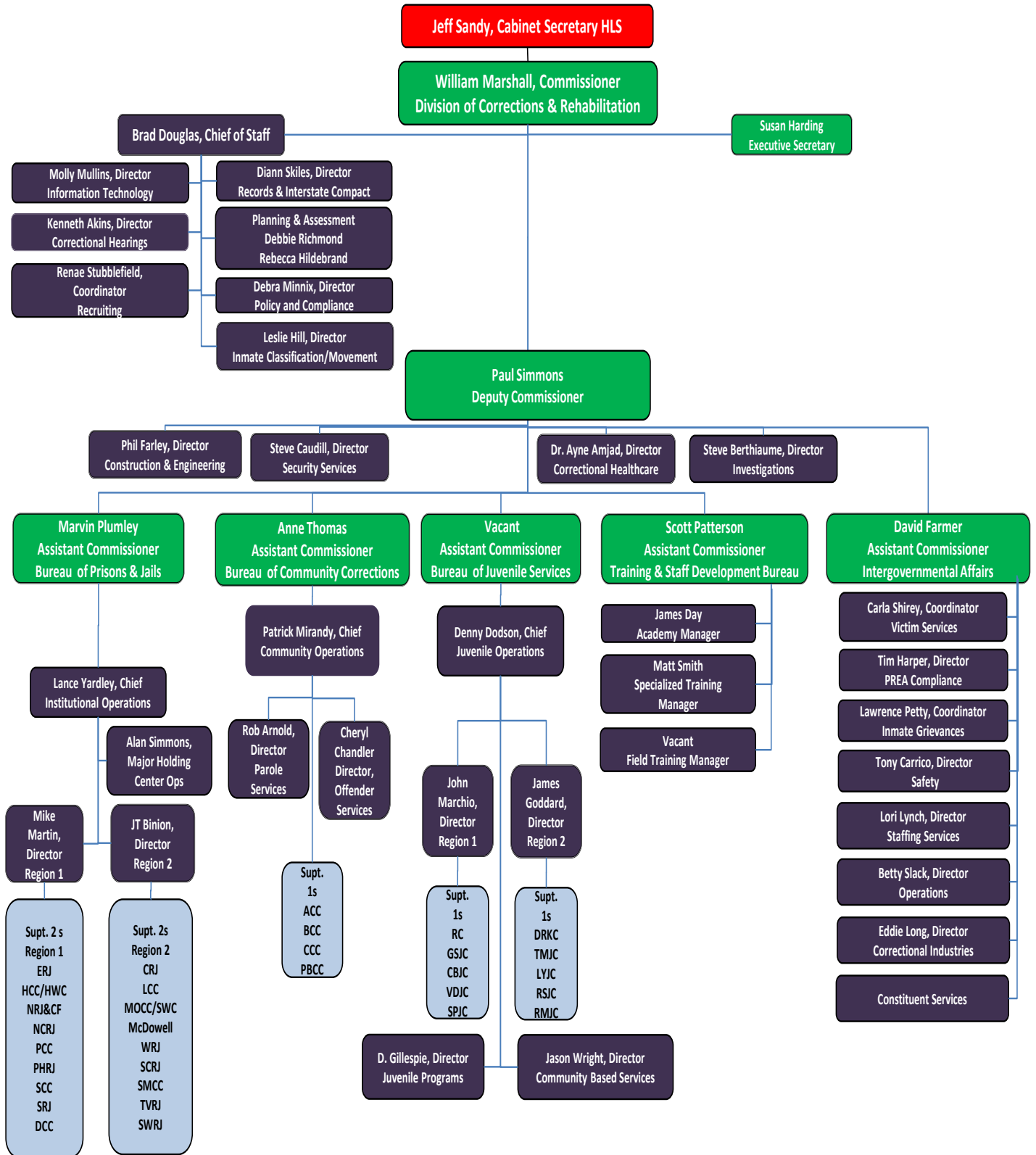
WV DCR Accomplishments

- There are opportunities for advancement: After 1st year, going from a COI to a COII, and completing one year of employment with no breaks in service, you will get a 7% increase. After 2nd year, moving up from a COII to a COIII, and completing a year of employment with no breaks in service as a COII, you will receive a 7% increase.
- Effective, October 24, 2022, there is an appointment incentive of \$1,000 for Correctional Officers who agree to work for DCR no less than 12 consecutive months.

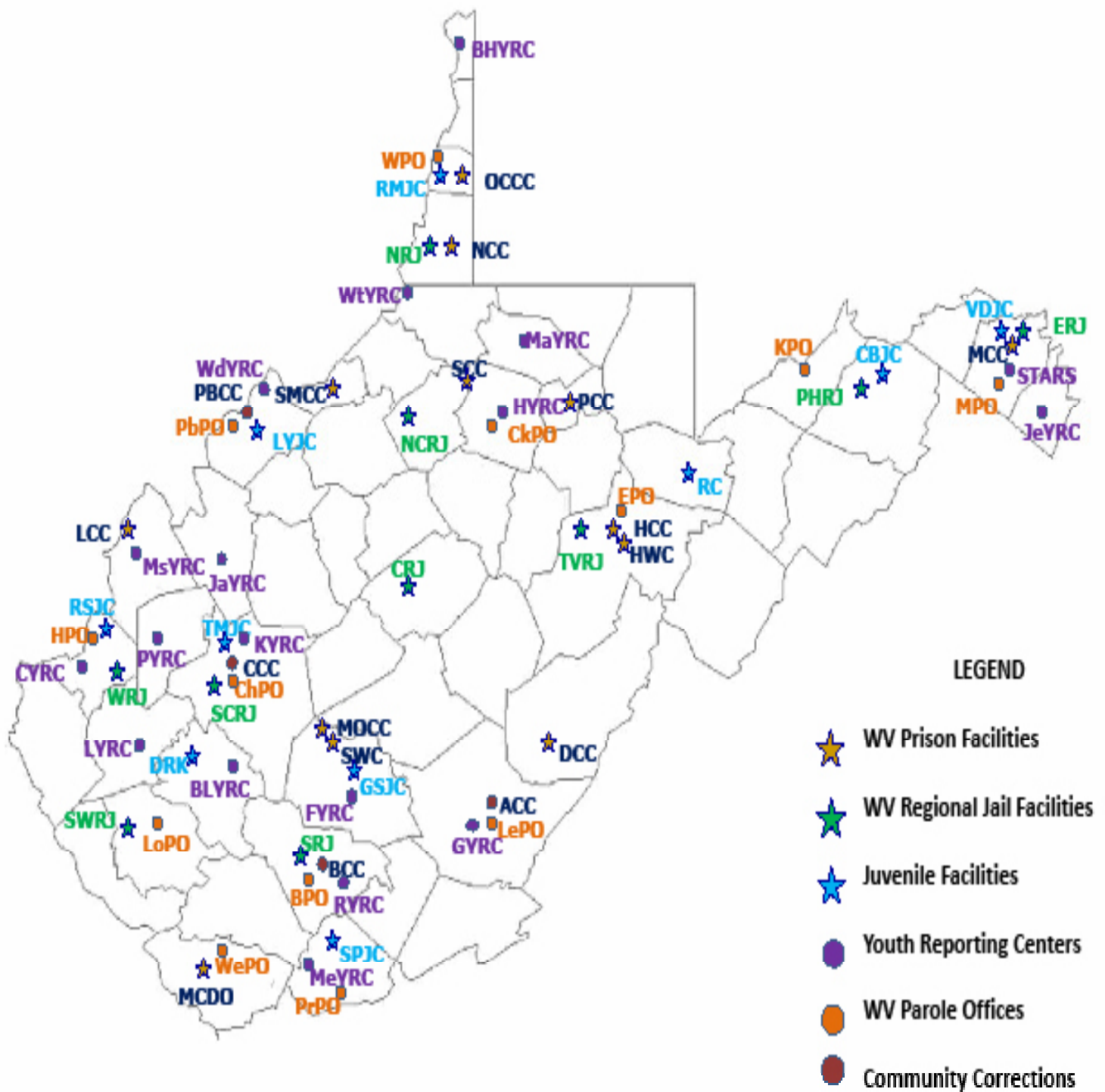
Programming

- A Certified Peer Mentor Program is currently being implemented at Huttonsville, Mount Olive and St. Mary's Correctional Centers.
- Every prison has had a programming audit completed and every jail had a Ls/CMI audit completed to ensure statewide accuracy and consistency.
- The 4-year Bachelor of Arts Bible College Program has been transitioned to a 2-year Associates Degree Program.
- The Bureau of Juvenile Services (BJS) Community Based Programs have initiated several alternative treatment options to allow at-risk youth to remain in the community after significant court involvement. These programs include:
 - The planning and implementation of a new Youth Reporting Center in Monongalia County has come to fruition through the collaboration of BJS with the Monongalia County Circuit Court and Probation Department, the County Board of Education, and the West Virginia State Board of Education.
 - The Mercer County Youth Reporting Center has relocated into a new facility, which has significantly expanded our capacity and services for the at-risk youth and families in Mercer County.
 - A new Community Intervention Program has been implemented, covering Wetzel and Tyler Counties. The goal of the service team is to proactively address pre-petition, truancy and other status offenders and delinquency issues by implementing a variety of intervention strategies in the school, home and in the community.
- The Rubenstein Juvenile Center along with the Donald R. Kuhn Juvenile Center have both continued to participate in the "Performance Based Standards" national best practices program, which uses evidence-based standards and practices to elevate the security, treatment, safety, and general morale of the programs, staff and youth, working to maximize the successful re-integration of the youth back into the mainstream of their families and communities.

WV DCR Table Of Organization



WV DCR Facility Locations



Leadership Biographies

Commissioner



William Marshall was born in Point Pleasant and graduated from Wahama High School, Marshall University and the W.V. State Police Academy. Marshall began his State Police career in Huntington, where he was awarded the 1995 National Association of Police Organizations (NAPO) West Virginia Police Officer of the Year. He later received Honorable Mention for NAPO National Police Officer of the Year. After a tour of duty in Ripley, Marshall transferred to the Interstate Drug Interdiction Team. He was then selected to work on the W.V. Worker's Compensation Fraud Task Force. He also spent time assigned to the drug task forces in Charleston and Parkersburg.

Such distinguished service led to Marshall's selection to the IRS Criminal Investigation Division's Fraud Task Force, working out of the U.S. Attorney's Office for the Southern District of West Virginia in Charleston. While there, he received commendations for outstanding investigative work. He also received a deputation from the U.S. Marshal's Service. Marshall was promoted to Sgt. in 2006 and named Commander of the Pleasants County Detachment. He then served as Commander of the Wood County Detachment before being selected as the Deputy Director of Traffic Records at State Police Headquarters, working with the Governor's Highway Safety Program.

In 2010, Marshall returned to Wood County and resumed command there until the conclusion of his career in July 2017. He retired with more than 25 years of service with the West Virginia State Police. Following his retirement, Military Affairs and Public Safety Cabinet Secretary, Jeff Sandy, chose Marshall as the Cabinet Department's first Director of Corrections Investigations. It was while performing those duties that Governor Jim Justice appointed Marshall as Director of the former legacy agency, Division of Juvenile Services. Under the newly formed Division of Corrections and Rehabilitation, he served as Assistant Commissioner of the Bureau of Juvenile Services until his appointment by Governor Justice in January 2023, as the Commissioner of WV Division of Corrections and Rehabilitation.

Deputy Commissioner



Paul Simmons began his career with the Division of Corrections at the West Virginia Penitentiary in July of 1987, as a Correctional Officer I and was promoted to the rank of Sergeant and then Lieutenant. He was part of the transition team for closing the Penitentiary and opening the Mount Olive Correctional Complex. In February of 1998, Paul transferred to Saint Marys Correctional Center and in October of that same year joined the staff at Northern Correctional Center, where he became the Associate Warden of Security in November, 2012. Paul also served as Northern Regional CERT Commander from 2001 to 2012. Paul was appointed as the Assistant Commissioner for the WV Division of Corrections on August 2, 2015 and as the Acting Deputy Commissioner on May 27, 2017. Paul is currently the Deputy Commissioner for the WV Division of Corrections and Rehabilitation. He supervises the Assistant Commissioners of Bureau of Prisons and Jails, Bureau of Community Corrections and the Bureau of Juvenile Services.

Leadership Biographies

Deputy Commissioner

The Departments under the supervision of the Deputy Commissioner include:

Security Services for Prisons, Steve Caudill, Director This department oversees the Special Operations of the WVDCR including the CERT (Corrections Emergency Response Team), CNT (Crisis Negotiators Team) and the K9 operations.

Investigations: Steve Berthiaume, Director

Investigators are currently embedded in 16 of the 24 adult facilities in the state and 1 of the 10 juvenile centers. These Investigators are tasked with conducting investigations at all the State's Correctional Centers including Prisons, Jails, Juvenile Detention Centers, Youth Reporting Facilities and Parole Offices. Additionally, the Unit offices two Investigators in McDowell County at the Stevens Correctional Facility. The Unit conducts nearly a thousand investigations at these facilities. In many cases, members of the Investigations Unit worked hand in hand with members of the West Virginia State Police and Prosecutor's Office in presenting these cases for prosecution.

The CID Unit acts as the point of contact for all Law Enforcement inmate communication requests that encompass calls, emails, video visits, visitor lists, contact lists, financial accounts and other inmate related information. Annually, the CID Unit fields several thousand such requests for information from local, state and federal law enforcement agencies. The CID Unit maintains the WVDCR STG (Security Threat Group) Database and Complete STG Member lists. This information is disseminated to appropriate law enforcement agencies when STG members are to be paroled or released into the community. The CID Unit has an Investigator officed at the West Virginia Fusion Center who coordinates and fills the requests for information of law enforcement agencies. This Investigator coordinates efforts with any Fusion Center partner on requests relating to WVDCR information. Additionally, this Investigator is the point of contact for the Joint Terrorism Task force for WVDCR relating to Terroristic ties as it pertains to any facility's safety and security.

Construction & Engineering--Phil Farley, Director

The West Virginia Division of Corrections Director of Construction and Engineering is responsible for overseeing Corrections physical improvements in the facilities throughout the state.

Correctional Healthcare--Ayne Amjad Director

This department serves as the WVDCR's liaison with health care vendors. Medical Services participates in assessments, planning, implementation and evaluation of policy and practice throughout the system.

Chief of Staff



Brad Douglas started with the WVDOC in February 2000 as a Data Analyst. In that function he assisted with the establishment and development of the WVDOC's Office of Research & Planning. In 2002, Brad was promoted to Criminal Justice Specialist 2. Later, in December 2003 after the retirement of the Director of Research & Planning, Brad was promoted to that position and served as such until 2011. In 2011, the Commissioner merged the Information Technology and Research & Planning units into the Office of Research & Technology with Brad in the Director's position. In July 2015, Brad was selected as the Commissioner's Chief of Staff and in that role served as the WVDOC's legislative liaison. In August 2017, Brad accepted a temporary assignment for the Regional Jail Authority as Administrator of the South Central Regional Jail. After the consolidation of the State's three correctional agencies under HB 4338 in July 2018, Brad returned to the Central Office as Chief of Staff for the West Virginia Division of Corrections & Rehabilitation.

Leadership Biographies

Brad was instrumental in the development of the Supreme Court Ordered “Master Plan to Address Prison Overcrowding” in 2002, served as staff on the Governor’s Commission on Prison Overcrowding in 2009, and served as a primary WVDOC technical consultant during the development and adoption of the Council of State Government’s “Justice Reinvestment in West Virginia” initiative. Brad was also co-project manager of the Inmate Management Information System Steering Committee and served as WVDOC and DMAPS project manager in the more recent Offender Information System project. Brad holds a Bachelor’s Degree in Criminal Justice from West Virginia State University, and a Masters in Justice Leadership from Marshall University. In 2001, Brad was the recipient of the WV Association of Correctional Employee’s K.D. Knapp Scholarship and the Southern States Correctional Association Scholarship. In December 2021, Brad served a temporary duty as Chief of Staff for the Department of Homeland Security out of Secretary Sandy’s office. Also, in August 2022, after the retirement of Commissioner Jividen, Brad was selected as Acting Commissioner for the DCR until William Marshall III was appointed Commissioner in January 2023, at that time Brad returned to performing the duties of Chief of Staff for the DCR.

Information Technology: Molly Mullins, Director

This office is responsible for planning, development, implementation of the agency’s Offender Information System, and liaisons with the WV Office of Technology on hardware, software, network infrastructure support and maintenance. The Office is also involved with the design, maintenance, and implementation of the agency’s Security Technology Infrastructure.

Records & Interstate Compact: Diann Skiles, Director

This office is responsible for inmate records and document management for the WVDCR. The office instructs, trains, and oversees records and document management at WVDCR facilities as well as ensuring proper information flow between the WVDCR and other state and federal agencies. The office also manages the Interstate Compact for the Transfer of Adult Offenders on Probation and Parole for the State of West Virginia, this task includes the procedures necessary to transfer parolees and probationers between states and the extradition of current inmates to other jurisdictions for trial or to serve detainees.

Correctional Hearings: Kenneth Akins, Director

This office oversees the inmate disciplinary hearing program and the management of hearings for Preliminary Parole Revocations, Revocations from Mandatory Supervision and Conditional Release. Correctional Hearing Officers report directly to this office in order to ensure an impartial disciplinary hearing at the facility level.

Planning and Assessment

This portion of the Commissioner’s Office manages the production of specialized reports for WVDCR leadership, answers requests for information from the legislature and other parties in state government and the public, liaisons with the Office of Research and Strategic Planning for correctional research purposes, and oversees all grant related activity within the agency.

Classification for Prisons: Lesley Hill, Director

This department is responsible for offender classification and offender movement within the WVDCR.

Policy & Compliance Office: Debbi Minnix, Director

This offices primary duty includes policy development.

Recruitment: Renae Stubblefield, Recruiting Coordinator

The position is responsible for providing recruiting services & resources, administrative support to the Chief of Staff, Team Captain & Agency Recruiters and/or HR Generalists within the Division of Corrections and Rehabilitation through coordination, scheduling, information dispersal and supplying promotional items when requested; Monitors facility vacancy rates and directs resources to areas of greatest need. The Recruiting Coordinator also assists in organizing division-wide recruiting events, as well as collecting data from all recruitment activities for statistical reporting within the Division.

Leadership Biographies

Assistant Commissioner: Bureau of Prisons & Jails



Marvin Plumley graduated from The College of West Virginia in June of 2000 with a Bachelor of Science degree in Criminal Justice. He began his career with the Division of Corrections in January 2001 at Anthony Correctional Center as a Correctional Counselor II. He remained at ACC until June of 2008 and served in multiple roles including Corporal, Lieutenant and Associate Warden of Security and Programs. In June 2008, Marvin was promoted to the Deputy Warden post at Lakin Correctional Center and served in that capacity for two years before transferring to serve as the Deputy Warden at Mount Olive Correctional Complex.

In May 2012, Marvin was appointed as the Warden at Huttonsville Correctional Center and remained there until April 2017 when he accepted a promotion to Senior Director of Compliance and Audits for the DOC. On July 1, 2018 consolidation of the State's three correctional agencies occurred and Commissioner Jividen appointed Marvin to serve as the Assistant Commissioner for the Bureau of Prisons and Jails for the newly formed Division of Corrections and Rehabilitation. Throughout his tenure Marvin has performed various ancillary duties to include EEO Counselor and Investigator, CERT, CNT, Investigations and several other committees/groups. Marvin currently oversees Lance Yardley, Chief of Institutional Operations, Alan Simmons, Major over Holding Center Operations and Region 1 and 2's prisons and jails.

The population count for the facilities are as of June 30, 2022.

Facility: Central Regional Jail & Correctional Center



County: Braxton

Population: 401

Superintendent: Harvey Hawkins

Mission: Detention For: Pre-trial Felons/ Misdemeanors, Sentenced Felons/Misdemeanors for the Counties of Braxton, Gilmer, Calhoun, Nicholas, Lewis, Roane, Webster, and Clay.

Facility: Denmark Correctional Center & Jail



County: Pocahontas

Population: 204

Superintendent: Jason Collins

Mission: Medium Security Prison. Housing Levels 1-3. Must be within 48 mos. of parole or discharge. Correctional Industries Work site. Supervised outside work crews.

Prison & Jail Facilities

Facility: Eastern Regional Jail & Correctional Center



County: Berkeley
Population: 506
Superintendent: Didymus Tate
Mission: Detention For: Pre-trial Felons/ Misdemeanors, Sentenced Felons/Misdemeanors for the Counties of Berkeley, Morgan, and Jefferson. Merged with Martinsburg Correctional Center-Male Classification Intake Facility.

Facility: Lakin Correctional Center & Jail



County: Mason
Population: 493
Superintendent: JD Sallaz
Mission: Maximum Security Prison. Housing Levels 1-5. All Female Facility. Classification Intake Unit. Diagnostic Unit. Behavioral Health Unit. KIDS Unit, Long/Short term segregation units. Correctional Industries Work Site. Supervised Outside Work Crews (Must be within 18 months of Parole or discharge.)

Facility: Huttonsville Correctional Center & Jail



County: Randolph
Population: 1106
Superintendent: Shelby Searls
Mission: Medium Security Prison. Housing Levels 1-5. Segregation Unit, RSAT Unit, Classification, Intake Unit, Geriatric Unit. Correctional Industries Work site. 46 bed Work Camp on site.

Facility: McDowell Co. Correctional Center & Jail



County: McDowell
Population: 370
Superintendent: Randall Mutter
Mission: Houses medium security inmates.

Prison & Jail Facilities

Facility: Mount Olive Correctional Complex & Jail



County: Fayette

Population: 938

Superintendent: Donnie Ames

Mission: Maximum Security Prison. Housing Level 3-5. Quilliams Unit. Classification Intake Unit. Mental Health & Medical Unit. Short/Long term segregation units, Correctional Industries Work Site. 48 bed Slayton Work Camp on site.

Facility: North Central Regional Jail & Correctional Center



County: Doddridge

Population: 889

Superintendent: Joe Wood

Mission: Detention for: Pre-trial Felons/ Misdemeanors, Sentenced Felons/Misdemeanors for the Counties of Wirt, Ritchie, Wood, Pleasants, Doddridge, Harrison, Marion, Monongalia, Tyler and Wetzel. Contractually houses Federal detainees for the USMS.

Facility: Northern Regional Jail & Correctional Center



County: Marshall

Population: 609

Superintendent: Shawn Straughn

Mission: Maximum Security Prison. Housing Levels 1-5. Special Management Facility. Short term segregation unit, Behavioral Health Unit, Diagnostic Unit. Correctional Industries Work Site. Detention for Pre-trial Felons/ Misdemeanors.

Facility: Ohio County Correctional Center & Jail



County: Ohio

Population: 25

Superintendent: Shawn Straughn

Mission: Minimum Security. Housing Levels 1-2. Technical Parole Violators. Supervised outside Work Crews. Must be within 24 months of Parole or Discharge. 8 Bed Work Release Unit.

Prison & Jail Facilities

Facility: Potomac Highlands Regional Jail & Correctional Center



County: Hampshire
Population: 329
Superintendent: Travis Myers
Mission: Detention for: Pre-trial Felons/ Misdemeanors, Sentenced Felons/ Misdemeanors for the Counties of Hardy, Hampshire, Mineral, Grant, and Pendleton

Facility: Pruntytown Correctional Center & Jail



County: Taylor
Population: 208
Superintendent: George Trent
Mission: Minimum Security Prison. Housing Level 1-2 (select level 3's with placement eval). Must be within 36 months of parole or discharge. Correctional Industries Work Site. Supervised Outside Work Crews.

Facility: St. Marys Correctional Center & Jail



County: Pleasants
Population: 550
Superintendent: Russell Maston
Mission: Medium Security Prison. Housing levels 1-3 (selective level 4) Must be 60 months from parole or discharge. Sheltered Housing Unit. Correctional Industries Work Site, Supervised Outside Work Crews.

Facility: Salem Correctional Center & Jail



County: Harrison
Population: 287
Superintendent: John Anderson
Mission: Medium Security Prison. Housing Levels 1-3 Must be within 60 months of parole or discharge. RSAT Unit. Classification Intake facility. Supervised Outside work crews. Must be within 24 months of parole or discharge.

Prison & Jail Facilities

Facility: South Central Regional Jail & Correctional Center



County: Kanawha
Population: 549
Superintendent: Ronnie Thompson
Mission: Detention for: Pre-trial Felons/ Misdemeanors, Sentenced Felons/ Misdemeanors for the Counties of Kanawha, and Jackson. Contractually houses Federal detainees for the USMS.

Facility: Southern Regional Jail & Correctional Center



County: Raleigh
Population: 557
Superintendent: David Young
Mission: Detention for: Pre-trial Felons/ Misdemeanors, Sentenced Felons/ Misdemeanors for the Counties of Raleigh, Fayette, Greenbrier, Wyoming, Summers, Mercer and Monroe. Contractually houses Federal detainees for the USMS.

Facility: Southwestern Regional Jail & Correctional Center



County: Logan
Population: 475
Superintendent: Timothy King
Mission: Detention for: Pre-trial Felons/ Misdemeanors, Sentenced Felons/ Misdemeanors for the Counties of Logan, Boone and McDowell.

Facility: Tygart Valley Regional Jail & Correctional Center



County: Randolph
Population: 485
Superintendent: Bryan Kelly Lanham
Mission: Detention for: Pre-trial Felons/ Misdemeanors, Sentenced Felons/ Misdemeanors for the Counties of Randolph, Tucker, Barbour, Preston, and Pocahontas.

Prison & Jail Facilities & Leadership Biographies

Facility: Western Regional Jail & Correctional Center



County: Cabell

Population: 608

Superintendent: Carl Aldridge

Mission: Detention for: Pre-trial Felons/Misdemeanors, Sentenced Felons/ Misdemeanors for the Counties of Cabell, Wayne, Lincoln, Putnam, and Mason.

Assistant Commissioner: Bureau of Community Corrections



Anne Thomas began her career with the WV Division of Corrections at Mount Olive Correctional Complex in 1999. She has served as an Office Assistant II, Correctional Counselor I, Correctional Counselor II, Correctional Case Manager, Correctional Program Specialist, and Unit Manager at MOCC. She served as Associate Warden of Programs at Lakin Correctional Center from 2007 to 2008. Anne accepted the position of Central Office Director of Classification in 2008 and held this position until being appointed as Warden at Parkersburg Correctional Center on September 1, 2012.

Anne was then appointed as Warden at Lakin Correctional Center on July 23, 2016. On July 22, 2017, she became Acting Chief of Staff at the Division of Corrections Central Office. She was appointed Assistant Commissioner for the Bureau of Community Corrections in July, 2018. In addition to her corrections experience, Ms. Thomas graduated from The College of West Virginia in 1998 with a Bachelor of Science degree in Social and Behavioral Sciences.

Anne currently oversees the Community Corrections Facilities including: Anthony Correctional Center and Jail, Charleston Correctional Center and Jail, Beckley Correctional Center and Jail and Parkersburg Correctional Center and Jail. She also oversees Patrick Mirandy, Chief of Community Operations, Robert Arnold, Director of Parole Services and Cheryl Chandler, Director of Offender Services..

Community Corrections Facilities

Facility: Anthony Correctional Center



County: Greenbrier
Population: N/A
Superintendent: Rob Neal
Mission: Male/Female -Court Ordered Young Adult Offender Program.

Facility: Charleston Correctional Center & Jail



County: Kanawha
Population: 86
Superintendent: Pam Baldwin
Mission: Minimum Security. Holding Level 1-2. Must be with 24 months of parole or discharge. Males and Females. Work Release.

Facility: Beckley Correctional Center & Jail



County: Raleigh
Population: 68
Superintendent: Jean Paul DeJarnette
Mission: Minimum Security. Holding Level 1-2. Must be within 24 months of parole or discharge. Males and Females. Work Release.

Facility: Parkersburg Correctional Center & Jail



County: Wood
Population: 214
Superintendent: Aaron Westfall
Mission: Minimum Security. Holding Level 1-2. General Population unit must be within 5 years of parole or discharge. Work Release Unit, must be within 24 months of parole or discharge.

The population for the facilities are as of June 30, 2021.

Community Service Hours FY2022

FY2022	Local Church	Community Cleanup	DOH Crews	County Commissions	Other DHS Agencies	Other State Agencies	Schools	Charity Organizations	Cities/Towns	Parks	Adopt-A-Highway	Farm Commission	Humane Society	Crime Victim Awareness	Other	Total
BCC	0	0	8,818	0	0	0	0	0	6,034	0	0	0	0	0	0	14,852
CCC	0	0	0	0	0	0	0	0	0	0	0	0	0	0	0	0
DCC	0	0	2,100	0	0	0	0	0	326	0	196	0	0	0	16	2,638
HWC	225	0	0	0	0	0	160	1,820	140	0	0	19,820	0	0	384	22,549
LCC	0	0	10,119	0	0	0	0	0	0	0	0	0	0	0	0	10,119
MCDO	0	0	0	0	0	0	0	0	0	0	0	0	0	0	0	0
NCC	0	0	0	0	0	0	0	0	0	0	0	0	0	0	0	0
OCCC	0	200	1,462	400	30	3,438	0	0	175	0	0	0	0	0	0	5,705
PBCC	0	180	0	0	610	0	0	120	336	0	0	0	0	0	0	1,246
PCC	0	0	3,343	0	0	0	114	0	86	0	0	941	26	0	200	4,710
SCC	0	0	0	0	0	0	0	0	0	24	0	0	0	0	0	24
SMCC	0	0	0	0	0	0	0	0	0	0	0	0	0	0	0	0
SWC	0	806	0	0	0	0	0	0	0	0	0	0	0	0	0	806
PAROLE	227	0	0	213	117	100	0	764	10	0	70	0	44	0	0	1,545
TOTAL	452	1,186	25,842	613	757	3,538	274	2,704	7,107	24	266	20,761	70	0	600	64,193

*Due to COVID restrictions, community service hours were greatly reduced for FY2022.

Parole Services Statistics: Caseload by County

The map below shows the number of clients supervised by Parole Services, by county at the end of FY 2022. Cabell County had the highest case load, followed by Kanawha, Wood, Berkeley and Mercer Counties. Some reasons for these high numbers are the fact that Kanawha and Cabell Counties have high populations compared to the rest of the state, while Berkeley and Mercer border other states and supervise a large number of interstate compact cases.



Parole Services Clients by type June 30, 2022.

Client Type	#	%
West Virginia Parolees	1977	58.30%
Out of State Probationers	924	27.25%
Out of State Parolees	152	4.48%
Mandatory Supervision	53	1.56%
Conditional Releases	51	1.50%
Non-Violent Parole Prgm.	234	6.90%
Total	3391	100.00%

On June 30, 2022, there were 3391 total clients under the supervision of WVDCR Parole Services. Of those 3391 clients it should be noted that 1076 were out of state cases.

Leadership Biographies

Assistant Commissioner: Vacant Bureau of Juvenile Services

Denny Dodson is the Chief of Juvenile Operations, John Marchio and James Goddard are Regional Directors, Debi Gillespie is the Director of Juvenile Programs and Jason Wright, Director of Community Based Services. The following Youth Reporting Centers are also under this Bureau:

Brooke/Hancock County Youth Reporting Center
Boone/Logan Youth Reporting Center
Cabell County Youth Reporting Center
Fayette County Youth Reporting Center
Greenbrier Youth Reporting Center
Harrison County Youth Reporting Center
Jackson County Youth Reporting Center
Jefferson County Youth Reporting Center
Kanawha County Youth Reporting Center
Lincoln County Youth Reporting Center
Marion County Youth Reporting Center
Mason County Youth Reporting Center
Mercer County Youth Reporting Center
Nicholas County Youth Reporting Center
Pocahontas County Youth Reporting Center
Putnam County Youth Reporting Center
Raleigh County Youth Reporting Center
Randolph County Youth Reporting Center
STARS Youth Reporting Center
Wood County Youth Reporting Center
Wetzel-Tyler Youth Reporting Center

Juvenile Facilities

The population for the facilities are as of June 30, 2022.

Facility: J.M. Chick Buckbee Juvenile Center



County: Hampshire
Population: 17
Superintendent: Keith McDaniel
Mission: Detention/Commitment/Rehabilitation. 8 Bed
Detention for males up to age 21.

Facility: Donald R. Kuhn Juvenile Center



County: Boone
Population: 39
Superintendent: Jeremy Dolin
Mission: Commitment/Rehabilitation facility for males up
to age 21.

Facility: Gene Spadaro Juvenile Center



County: Fayette
Population: 19
Superintendent: Timothy Meadows
Mission: Detention Residents only.

Facility: Lorrie Yeager Juvenile Center



County: Wood
Population: 21
Superintendent: Travis White
Mission: Detention Facility. 24 Bed facility.

Juvenile Facilities

Facility: Kenneth "Honey" Rubenstein Juvenile Center



County: Tucker
Population: 19
Superintendent: Dan Dilly
Mission: Commitment/Rehabilitation. 56 bed Rehabilitation facility houses adjudicated low risk males between ages 15-21.

Facility: Ronald Mulholland Juvenile Center



County: Ohio
Population: 36
Superintendent: Linda Scott
Mission: Operated by Youth Services System. Commitment/Rehabilitation and Detention Facility. 10 Bed Detention facility for males and females up to age 21.

Facility: Robert L. Shell Juvenile Center



County: Cabell
Population: 26
Superintendent: Paul Stump
Mission: Diagnostic, Detention and Commitment/Rehabilitation Facility. Various assessments conducted to determine appropriate individual needs.

Facility: Sam Perdue Juvenile Center



County: Mercer
Population: 20
Superintendent: Gary Patton
Mission: Commitment/Rehabilitation Facility. 20 Bed Sexual Offender Program for males ages 13-20.

Juvenile Facilities

Facility: Tiger Morton Juvenile Center



County: Kanawha

Population: 24

Superintendent: David Murphy

Mission: Commitment/Rehabilitation and Detention Facility.

Facility: Vicki Douglas Juvenile Center



County: Berkeley

Population: 17

Superintendent: Lucas Roper

Mission: Detention Facility.

Leadership Biographies

Assistant Commissioner: Training & Staff Development Bureau



Scott Patterson began employment in West Virginia corrections in 1992 as a Correctional Officer at the West Virginia Penitentiary. He worked at the Penitentiary until it closed in 1995, serving as a Counselor and acting Unit Manager. When the Mount Olive Correctional Complex opened, he became its Institutional Training Officer. While at Mount Olive, he served as a Case Manager, Unit Manager and then Director of Classification.

In 1998, he was appointed as Warden of the Anthony Correctional Center, where he served until 2007; during this tenure at Anthony, he was placed on temporary duty assignment in McDowell County as the Warden of the Stevens and Welch Correctional Centers. In 2007, he left the Division of Corrections and deployed to Iraq as a contractor to the U.S. Department of Justice, helping that country rebuild its corrections system to operate in accordance with international standards for the humane treatment of prisoners and the rule of law.

He returned from Iraq in 2009 and, after a brief hiatus, accepted employment as a Child Protective Services Worker with the WV Department of Health and Human Resources in 2010, a position he held until 2011 when he was once again appointed as Warden of the Anthony Correctional Center. In 2014 he became the WV DOC Senior Director of Compliance and Audits, and held that position until January 2017, when he became the Director of Training. In May 2017, he was assigned as the Acting Assistant Commissioner, and he held that position until July 2018 when he was appointed the Division of Corrections and Rehabilitation's Assistant Commissioner for the Bureau of Training and Staff Development.

Leadership staff under this Bureau include: James Day, Academy Manager; and Matt Smith, Field Training Manager.



Leadership Biographies

Assistant Commissioner: Intergovernmental Affairs Bureau



Mr. David Farmer began his career with the WVRJA in February 2002 as the Director of Inmate services at the South Central Regional Jail in Charleston, WV. He was appointed as the Administrator of the Southwestern Regional Jail in Logan, WV in December of 2011. He remained in that position until being appointed as Director of the Academy/ Deputy Chief of Operations in August 2014. Mr. Farmer was appointed Executive Director of the Regional Jail and Correctional Facility Authority on June 1, 2015. In July 2018, Mr. Farmer was appointed Assistant Commissioner of Intergovernmental Affairs Bureau where he now oversees Constituent and Victims Services, Inmate Grievances Coordinator, Director of Operations, Director of Safety and Loss Control, Director of Staffing Services and the Director of PREA Compliance.

The Office of Constituent Services serves as a liaison between the WV Division of Corrections and Rehabilitation and the community by providing information to address concerns regarding conditions of confinement and delivery of timely information. The role of this office is to provide an avenue for the general public to obtain and express concerns on relative issues to the division. The Office of Constituent Services receives inquires through the public website, or by contacting the Central Office.

The Office of Constituent Services maintains Employee Grievances for the Division. The Administrative Hearing Examiner administers the Level I Grievance process for approximately 4000 employees that fall within the Division of Corrections and Rehabilitation. All Level I Grievance Hearing decisions are submitted to the Chief Hearing Examiner of the WV Division of Corrections and Rehabilitation, for review and final sanction. If the Grievant is not satisfied with the Hearing Examiner's response at Level I, the Grievant may appeal to the State Employees Grievance Board.

During the fiscal year 2021-2022, there were approximately fifty-four Level I grievances filed; six terminations/suspensions, eight written reprimands, nine pay/promotion related issues, fourteen job position/classification related issues, four related to leave/time, three in relation to hostile work environment/EEO, six over schedule/TDY, two staff negligence/retaliation, one Academy attendance, and one over an employee performance appraisal. Level I outcomes included one granted, one granted in-part, one dismissed, twenty-four denied, eleven withdrew, and sixteen waived.

The Victim Services Program offers direct services to victims of crime in all 55 counties in West Virginia for the West Virginia Division of Corrections and Rehabilitation. Carla Shirey is the VSS (Victim Services Specialist) and provides services to victims by registering them in the OIS data base and registering them with the WV Victim Notification Everyday (VINE) notification program. Registration is by phone, email, TTY, SME text, and by the VINE app. New VINE registration totals for FY22 were 5,642. During FY2022, Ms. Shirey provided direct services to 374 Victims of Crime. She assisted with 146 parole hearings and assisted 135 survivors or family members of homicide.

Leadership Biographies

Intergovernmental Affairs Bureau, Continued...

Staffing Services: Lori Lynch, Director

The Staffing Services section supplies the Commissioner and Deputy Commissioner with the information needed to balance the personnel resources available with the needs of the facilities and work units within the entire Division. With an everchanging inmate and resident population, staffing audits are ongoing to ensure that resources are shifted as the Commissioner deems necessary. Staffing Services assists all Bureaus of the WV Division of Corrections & Rehabilitation, with the utilization of available personnel positions to insure that the resources are in place to fulfill the mission of each Bureau.

Grievances: Lawrence Pettey: Inmate Grievance Coordinator

The Grievance Coordinator reviews 3rd level inmate grievances to insure due process and propriety of grievances filed by inmates, while protecting the interests of the Division and State.

PREA Compliance: Tim Harper, Director

This office was established to ensure compliance of the standards of the Prison Rape Elimination Act. This office continues to work to ensure compliance with the standards of the Prison Rape Elimination Act. A total of 11 PREA Audits were completed during FY22; the facilities that received accreditation were:

September 13-17, 2021- Robert Shell Juvenile Center, Western Regional Jail, Tiger Morton Juvenile Center
October 18-22, 2021- Denmark Correctional Center, Pruntytown Correctional Center, Salem Correctional Center
March 7-11, 2022- North Central Regional Jail, South Central Regional Jail
June 12-17, 2022- Southwestern Regional Jail, Donald R. Kuhn Juvenile Center, Stevens Correctional Center

Safety & Loss Prevention Department: Anthony Carrico, Director

Goals of this office include the reduction of workers compensation experience modification ratings, improve return to work participation and review inspection principles, safety strategies and overall consistency and uniformity with all facilities.

Operations Department: Betty Slack, Director

The Director of Operations oversees the contract management of all inmate services contracts; manages the internal audits section; and serves as the liaison for the Division of Corrections and Rehabilitation and the Department of Administrative Services.

Correctional Industries: Eddie Long, Director

Correctional Industries (CI) is a self-sustaining special revenue business entity and a corrections program that is responsible for efficient and effective operations of the various manufacturing facilities within the Division of Corrections and Rehabilitation. CI produces numerous products including office furniture, license plates, validation decals, signs, inmate clothing, printed materials and more.

Fiscal & Budget Statistics

Prisons General Revenue by Category FY22	Expenditures	% Of Budget Expended
Personnel Services (Payroll)	77,608,196	32.68%
Annual Increment	964,145	0.41%
Inmate Payroll	582,961	0.25%
Employee Benefits	26,192,106	11.03%
Utilities	6,751,658	2.84%
Food	6,451,586	2.72%
Other Operating Expenses	16,286,842	6.86%
Repairs & Alterations	2,311,975	0.97%
Equipment	1,434,206	0.60%
Inmate Medical	22,732,738	9.57%
Payments to Regional/County Jails & Federal Bureau of Prisons	57,993,103	24.42%
Board of Risk Insurance Premium	4,329,819	1.82%
Less Reimbursements	193,382	0.08%
Total Expenditures	223,832,716	94.24%

Average Annual Cost Per Inmate for FY 2022: \$38,099 Average Cost Per Day= \$104

(Includes all expenditures \$223,832,716 / Average Population 5875 and includes food/medical costs)

Jails General Revenue by Category FY22	Appropriated	Spec Rev	Total	% of Budget Expended
Personnel Services (Payroll)	\$ 1,058,660	\$ 40,565,916	\$ 41,624,575	34.61%
Annual Increment	\$ 24,650	\$ 369,103	\$ 393,753	0.33%
Employee Benefits	\$ 231,445	\$ 13,811,632	\$ 14,043,077	11.68%
Utilities	\$ -	\$ 7,526,782	\$ 7,526,782	6.26%
Food	\$ -	\$ 10,391,815	\$ 10,391,815	8.64%
Other Operating Expenses	\$ 74,384	\$ 7,492,335	\$ 7,566,719	6.29%
Repairs & Alterations	\$ -	\$ 3,674,313	\$ 3,674,313	3.06%
Equipment	\$ -	\$ 1,720,948	\$ 1,720,948	1.43%
Inmate Medical	\$ -	\$ 24,243,062	\$ 24,243,062	20.16%
Bond Payments	\$ -	\$ -	\$ -	0.00%
Board of Risk Insurance Premium	\$ 58,707	\$ 514,659	\$ 573,366	0.48%
Less Reimbursements	\$ (487,131)	\$ 2,323,824	\$ 1,836,692	1.53%
Total Expenditures	\$ 960,715	\$ 112,634,387	\$113,595,103	94.46%

Average Annual Cost Per Inmate for FY 2022: \$20,031 Average Cost Per Day= \$54.88

Juveniles General Revenue by Category FY22	Expenditures	% Of Budget Expended
Personnel Services (Payroll)	\$ 21,115,326	48.14%
Annual Increment	\$ 248,219	0.57%
Employee Benefits	\$ 7,638,268	17.41%
Utilities	\$ 808,887	1.84%
Food	\$ 274,182	0.63%
Other Operating Expenses	\$ 6,235,328	14.22%
Repairs & Alterations	\$ 590,171	1.35%
Equipment	\$ 159,758	0.36%
Inmate Medical	\$ 3,781,076	8.62%
Board of Risk Insurance Premium	\$ 296,386	0.68%
Less Reimbursements	\$ -	0.00%
Total Expenditures	\$ 41,147,601	93.81%

Average Annual Cost Per Inmate for FY 2022: \$185,350 Average Cost Per Day= \$508

(Includes all expenditures \$41,147,601/ Average Population 222 and includes food/medical costs)

Adult Prison Statistics

County	2010	2011	2012	2013	2014	2015	2016	2017	2018	2019	2020	2021	2022
Barbour	52	55	49	43	37	41	56	77	69	72	56	60	52
Berkeley	288	305	288	328	301	308	309	296	323	344	307	296	278
Boone	98	89	110	120	120	110	95	93	91	91	60	50	53
Braxton	79	80	86	71	68	65	67	55	78	78	51	70	57
Brooke	59	77	73	62	69	63	75	79	72	69	67	47	54
Cabell	410	424	445	494	462	499	492	503	492	510	375	345	296
Calhoun	13	19	17	18	14	23	22	18	24	31	36	35	35
Clay	24	33	40	33	35	47	41	38	61	45	37	41	48
Doddridge	21	24	27	24	22	22	25	19	21	23	19	16	33
Fayette	212	235	241	251	260	244	239	248	249	246	208	212	204
Gilmer	19	20	31	32	28	36	32	27	28	34	30	27	17
Grant	58	58	74	65	50	43	41	45	43	49	44	44	45
Greenbrier	126	126	136	146	119	150	144	121	118	116	94	87	98
Hampshire	64	64	65	73	78	87	90	96	102	105	86	83	75
Hancock	108	108	96	99	99	96	115	120	114	95	84	79	76
Hardy	35	35	38	42	29	41	48	43	58	43	31	36	39
Harrison	238	250	272	273	297	278	324	322	327	355	327	299	291
Jackson	97	108	135	141	123	121	107	101	95	98	89	99	88
Jefferson	99	80	68	84	86	90	99	102	121	124	113	122	125
Kanawha	755	835	837	820	743	742	761	754	743	764	638	612	589
Lewis	51	53	54	48	64	70	80	74	68	80	66	69	73
Lincoln	49	42	52	43	53	70	85	98	92	93	91	69	41
Logan	169	205	171	175	156	162	148	169	128	130	120	108	99
Marion	167	197	203	207	192	179	190	195	185	195	209	235	215
Marshall	78	94	103	88	79	87	87	95	92	105	87	93	93
Mason	98	106	105	104	70	78	95	84	77	65	58	76	49
McDowell	111	108	115	102	102	99	108	97	101	96	86	71	67
Mercer	434	445	444	454	460	446	418	377	389	342	283	248	260
Mineral	49	69	77	73	63	62	57	58	57	55	40	41	40
Mingo	186	171	157	173	123	136	123	111	124	111	92	103	118
Monongalia	179	197	217	220	221	233	216	229	238	261	237	254	229
Monroe	31	35	52	56	63	56	60	55	49	48	57	37	35
Morgan	73	70	76	89	89	83	72	90	85	86	70	66	59
Nicholas	144	131	115	120	120	120	100	93	96	97	95	103	108
Ohio	250	277	279	271	244	220	203	219	205	194	166	168	163
Pendleton	38	41	38	32	32	28	24	34	30	34	26	22	24
Pleasants	8	5	13	6	13	12	14	11	14	24	19	18	19
Pocahontas	13	12	17	12	14	15	16	26	17	22	18	15	16
Preston	80	93	95	85	74	85	85	83	110	94	103	101	102
Putnam	128	124	140	135	132	138	147	124	137	135	101	98	101
Raleigh	278	276	278	294	277	271	311	322	327	302	285	256	243
Randolph	73	70	59	55	79	80	74	89	138	152	118	116	121
Ritchie	25	31	26	25	23	27	26	29	30	52	49	43	51
Roane	47	60	55	61	64	62	70	73	94	99	87	79	77
Summers	48	47	47	76	65	62	52	58	57	68	58	51	52
Taylor	83	96	82	81	58	76	80	89	94	84	56	51	51
Tucker	10	7	4	4	1	3	5	5	9	9	6	6	10
Tyler	22	33	40	32	28	28	39	32	32	22	13	20	17
Upshur	91	100	101	86	108	92	88	106	100	81	85	82	75
Wayne	158	155	171	144	143	173	161	141	183	204	172	175	164
Webster	51	62	74	87	97	116	112	99	85	84	62	47	57
Wetzel	54	45	56	75	65	58	56	62	61	57	49	54	57
Wirt	24	20	23	24	22	16	23	20	23	25	22	16	14
Wood	280	303	322	306	299	316	327	348	368	406	365	373	349
Wyoming	48	52	47	46	49	49	67	62	60	58	50	48	40

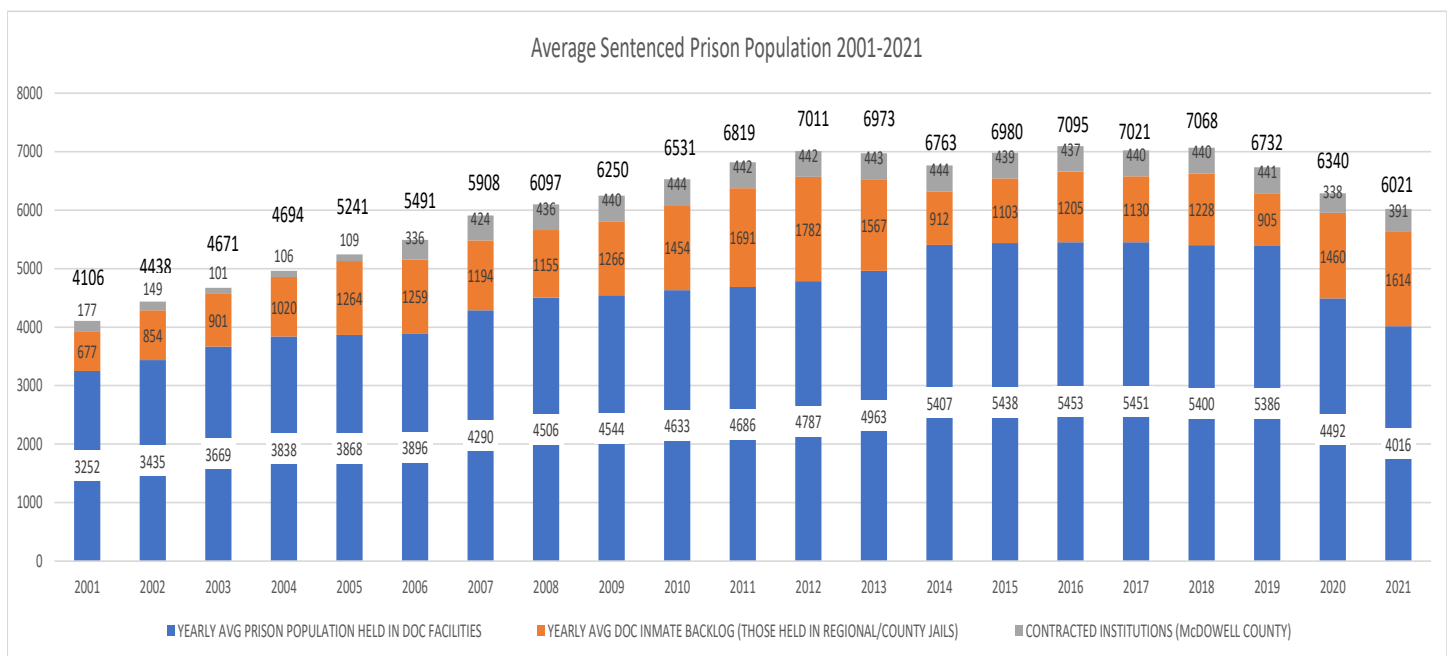
Adult Prison Statistics

The table on the right and the chart below shows the total average sentenced inmate population in WVDCR institutions and the total average sentenced inmate population that have been committed to the WVDCR, but were awaiting prison space in county/regional jails during the past 21 years. During that period, the total inmate population for WVDCR has increased by a total of 1915 inmates.

Inmates that were committed to the WVDCR but were waiting in county/regional jails for bed space in WVDCR facilities increased by a total of 937 inmates since 2001.

The WVDCR also houses inmates in the McDowell County Correctional Center on a per diem contract basis; this population is represented in the “Contracted” column. This segment has increased by 214 inmates in the last 21 years.

Calendar Year	Prisons	Jails	Contracted	Total
2001	3252	677	177	4106
2002	3435	854	149	4438
2003	3669	901	101	4671
2004	3838	1020	106	4964
2005	3868	1264	109	5241
2006	3896	1259	336	5491
2007	4290	1194	424	5908
2008	4506	1155	436	6097
2009	4544	1266	440	6250
2010	4633	1454	444	6531
2011	4686	1691	442	6819
2012	4787	1782	442	7011
2013	4963	1567	443	6973
2014	5407	912	444	6763
2015	5438	1103	439	6980
2016	5453	1205	437	7095
2017	5451	1130	440	7021
2018	5400	1228	440	7068
2019	5386	905	441	6732
2020	4492	1460	388	6340
2021	4016	1614	391	6021



Adult Prison Statistics

Commitments to WVDCR * Does include those sentenced to prison but housed temporarily in jail locations.

FY2022	Regular	Diagnostic	PVT	PVF	PRP	Home Confinement Revoked	Home Confinement Parole Revoked	Probation Violator Felony	Probation Violator Tech	ACC	Escapes Returned to Custody	Returned By Judge as Fit	Community Cor. Rev.	Sex Offenders Released Revocation	Mandatory Release Revoked	Conditional	Non-Violent	Total Commitments
July	163	1	52	1	28	9	0	15	5	10	0	0	1	5	1	4	0	295
August	125	1	44	0	37	5	0	13	4	10	0	0	0	2	5	3	0	249
September	174	3	49	1	37	7	0	13	14	10	0	0	0	1	5	6	0	320
October	88	4	42	0	27	3	0	6	12	6	0	0	0	3	0	0	0	191
November	169	1	52	1	37	7	0	0	18	6	0	0	0	5	4	0	0	300
December	110	0	43	2	46	3	0	1	14	6	1	0	0	7	2	1	1	237
January	44	2	51	1	34	2	0	0	9	7	0	0	0	3	0	4	4	161
February	37	3	46	1	29	2	0	0	17	6	1	1	1	3	1	3	2	153
March	166	3	44	0	35	13	0	0	36	6	0	0	1	10	5	3	6	328
April	121	7	43	2	32	5	0	1	24	5	0	0	0	6	8	2	7	263
May	120	3	40	0	29	3	0	0	27	9	0	0	0	2	1	1	3	238
June	121	4	39	1	22	9	0	0	42	10	0	1	2	5	0	2	5	263
Totals	1438	32	545	10	393	68	0	49	222	91	2	2	5	52	32	29	28	2998

Abbreviation Guide:

- Regular:** Regular Commitment to a WVDCR facility of an appropriate security level.
- Diagnostic:** Commitment for evaluation purposes in order to assist Judges in making sentencing decisions.
- PVT:** Commitment returning a parolee to prison for a technical revocation.
- PVF:** Commitment returning a parolee to prison for a new felony.
- PRP:** Commitment returning a parolee to prison for a revocation due to pending felony/misdemeanor
- Home Conf. Rev.:** Commitment for revoked home confinement, supervised by local jurisdiction.
- Home Conf. Par Rev.:** Commitment for revoked home confinement - parole.
- ACC:** Commitment to the young adult facility, Anthony Correctional Center.
- Esc. Returned:** Escaped from WVDCR facility and returned to complete sentence.
- Returned as Fit:** Returned by Court to Anthony Correctional Center to complete program.

Releases from WVDCR* Does not include those sentenced to prison but housed temporarily in jail locations.

FY2022	# of Inmates Paroled	Mandatory Supervision Release	Medical Respite	Conditional Pardon	Full Pardon	Diagnostic Releases	Escape	Death	# of Inmates Discharged	Successful ACC	Unfit ACC	COR Probation	COR Conviction Overturned	COR Time Served	COR Treatment Center	COR Home Confinement	Conditional	Non-Violent	Total Releases
July	163	5	0	0	0	3	0	4	37	7	5	1	0	3	0	1	11	0	240
August	131	3	0	0	0	1	0	2	38	1	3	2	0	3	1	3	17	29	234
September	168	3	0	0	0	0	1	6	35	5	3	0	0	1	0	1	15	34	272
October	130	4	0	0	0	0	1	1	30	5	5	1	0	3	0	0	6	26	212
November	137	3	0	0	0	1	0	2	48	9	2	2	0	2	0	0	11	39	256
December	156	6	0	0	0	0	2	6	38	2	0	5	0	6	1	0	7	18	247
January	131	6	0	0	0	1	0	4	39	5	3	3	0	1	1	0	8	16	218
February	138	7	0	0	0	1	0	2	31	3	4	3	0	0	0	0	17	18	224
March	157	5	0	0	0	0	0	2	44	1	4	2	0	3	0	0	8	18	244
April	134	3	0	0	0	0	0	1	43	1	2	1	0	5	1	2	3	16	212
May	112	7	0	0	0	2	1	1	38	9	2	0	0	4	0	0	8	22	206
June	164	3	0	0	0	0	0	0	48	0	3	4	1	2	1	0	7	26	259
Totals	1721	55	0	0	0	9	5	31	469	48	36	24	1	33	5	7	118	262	2824

***Diagnostic Releases:** Diagnostic commitments to the WVDCR are typically for a temporary period of 60 days after which the inmate is released and reconsidered by the Court.

****COR:** Court Ordered Release; Although an inmate can be released from prison by court order for various reasons, the data in this column typically indicates releases from Anthony Correctional Center, a special young adult correctional institution.

Adult Prison Statistics

The data presented in this report was gathered from the WVDCR Offender Information System (OIS) on June 30, 2022. This report includes data on those inmates in the legal custody of the WVDCR as of June 30, 2022. Unless otherwise noted, each inmate is represented only once in each table by their most serious crime.

	FY2015	FY 2016	FY 2017	FY 2018	FY2019	FY2020	FY2021	FY2022
ABDUCTION								
Concealment Of Minor Child From Custodian In Another State	0	0	1	2	0	0	0	0
Concealment Or Removal Of Minor Child To Deprive Custodian Of Custody	2	3	1	0	2	2	1	2
Threats To Kidnap Or Demand Ransom	3	1	2	3	1	2	0	0
ABDUCTION TOTAL	5	4	4	5	3	4	1	2
ARSON								
Attempt To Commit Arson; Fourth Degree Arson	0	6	2	2	4	2	4	1
Burning, Or Attempting to Burn, Insured Property	0	0	1	0	0	0	1	2
Causing Injuries During an Arson Related Crime	0	0	0	0	0	0	0	1
First Degree Arson	30	30	26	21	17	12	15	15
Second Degree Arson	11	10	10	10	14	5	8	10
Starting Fire on Lands of Another	2	1	0	0	0	0	0	0
Third Degree Arson	6	5	5	5	4	2	3	5
Willfully, Unlawfully and Maliciously Setting Fire	0	0	0	0	0	0	0	1
ARSON TOTAL	49	52	44	38	39	21	31	35
ASSAULT								
Assault During Commission/Attempt To Commit A Felony	18	16	16	15	14	14	9	7
Battery On A Governmental Representative-2nd Offense	0	2	2	3	5	2	1	1
Battery Police Officers, Etc 2nd Offense	5	1	1	1	2	0	0	0
Domestic Violence - Third Or Subsequent Offense	58	51	58	56	66	51	58	55
Malicious Assault	108	95	85	109	91	86	83	69
Malicious Assault; Police Officers, Etc.	3	2	2	2	2	5	7	4
Stalking; 2nd or Subsequent Offense	0	1	0	3	1	2	2	2
Strangulation	0	0	6	20	32	38	46	38
Unlawful Assault	104	99	95	99	94	85	78	75
Violation of Protective Order	2	0	0	0	2	2	5	3
Wanton Endangerment Involving A Firearm	49	47	65	60	67	52	62	56
ASSAULT TOTAL	347	314	330	368	376	337	351	310
BRIBERY								
Bribery; false claims; conspiracy; criminal penalties	0	0	0	1	1	0	1	0
Bribery Or Attempted Bribery	0	1	1	2	1	3	3	1
BRIBERY TOTAL	0	1	1	3	2	3	4	1
BURGLARY/BREAKING AND ENTERING								
Breaking And Entering	285	274	304	296	277	233	209	223
Breaking And Entering to Remove Equipment	1	2	0	0	2	1	0	0
Burglary By B&E (1-15 Yrs)	357	388	419	440	406	316	329	284
Burglary; Daytime Without Breaking	194	212	203	194	195	123	101	70
BURGLARY/BREAKING AND ENTERING TOTAL	837	876	926	930	880	673	639	577
CHILD ABUSE/NEGLECT								
Abuse Or Neglect Of Incapacitated Adult	2	2	3	5	8	8	7	7
Child Abuse By Parent Resulting In Injury	27	28	25	33	19	13	12	12
Child Abuse By Parent W/ Serious Bodily Injury	14	15	14	10	21	14	6	10
Child Abuse W/ Risk Of Serious Bodily Injury Or Death	13	21	16	14	14	15	10	13
Child Neglect By Parent Resulting In Death	25	24	25	18	15	10	18	16
Exposure Of Children To Methamphetamine	18	14	9	2	6	4	2	2
Gross Neglect Of Child Creating Risk Of Injury Or Death (1-5 Yrs)	53	46	55	40	53	45	66	62
Neglect By Parent, Guardian Or Custodian Causing Bodily Injury (1-3 Yrs)	8	11	8	9	7	12	5	9
Neglect By Parent, Guardian Or Custodian Causing Serious Bodily Injury (1-10 Yrs)	14	14	15	10	10	5	9	8
Parent Or Custodian Permits Death Of Child By Abuse	2	2	2	2	1	1	0	2
Parent, Guardian, Custodian Or Other Person in Position of Trust Allowing Sexual Abuse of Child over 16 By Another	2	3	0	0	0	0	0	0
Purchase or Sale of Child	0	0	0	0	0	0	1	0
CHILD ABUSE/NEGLECT TOTAL	178	180	172	143	154	127	136	141

Adult Prison Statistics

	FY2015	FY 2016	FY 2017	FY 2018	FY 2019	FY2020	FY2021	FY2022
COUNTERFEITING/FORGERY								
Counterfeiting	7	9	7	6	4	8	4	6
Forge/Counterfeit Documents/Plates	0	2	1	0	1	2	19	4
Forgery Of Public Record, Certificate	4	5	6	6	8	14	12	6
Forgery/Counterfeiting/Etc Of Lottery Tickets	0	0	4	1	1	0	1	1
Forging Or Uttering Other Writing; Penalty	192	173	172	171	150	124	97	77
Possession of Counterfeit With Intent to Utter-Ten or More Notes	0	2	1	0	1	0	1	2
COUNTERFEITING/FORGERY TOTAL	203	191	191	184	165	148	134	96
DESTRUCTION/DAMAGE/VANDALISM OF PROPERTY								
Damage Or Destruction Of Railroad Or Public Utility Company Property (1-3 Yrs)	0	0	1	0	1	1	1	1
Destruction/Concealing Will/Codicil; Embezzlement By Fiduciary	0	0	0	0	0	1	0	0
Destruction/Damage/Vandalism, Removal, Injury To or Destruction of Property	0	0	2	0	0	0	0	0
Destruction of Building by Rioters	0	0	0	0	0	4	3	2
Removal, Injury To Or Destruction Of Property	25	21	14	28	18	13	15	15
DESTRUCTION/DAMAGE/VANDALISM OF PROPERTY TOTAL	25	21	17	28	19	19	19	18
DRUG/NARCOTIC OFFENSES								
2nd Offense; Poss. Of Ephedrine, Pseudoephedrine	1	1	0	0	0	0	0	0
Bringing a Controlled Substance into a Jail	0	0	1	0	0	0	0	0
Conspiracy to Manuf., Del., Poss. w/Int. to Del Cont'd Subs. (determinate term 2 up to 10 years)	0	0	0	0	33	56	57	62
Conspiracy to Manuf., Del., Poss. w/Int. to Del Cont'd Subs. (determinate term 2 up to 15 years)	0	0	0	0	0	1	1	5
Conspiracy to Manuf., Del., Poss. w/Int. to Del Cont'd Subs. (determinate term 2 up to 20 years)	0	0	0	1	0	2	3	4
Conspiracy to Manuf., Del., Poss. w/Int. to Del Cont'd Subs. (determinate term 2 up to 30 years)	0	0	0	0	0	3	2	3
Distribution By Persons Age 18 Or Older W/1 1000 Feet Of School Sch I,II Narcotic	6	4	4	5	5	5	3	2
Distribution By Persons Age 18 Or Older W/1 1000 Feet Of School Sch I,II, III, Non-Narcotic	1	1	0	0	1	0	2	2
Distribution to Persons Under the Age of 18 Sch I, II Narcotic	1	0	0	1	0	0	0	0
Drug Delivery resulting in death; failure to render aid	0	0	0	4	9	11	18	18
Drug Offense 2nd Or Subsequent Offense	5	5	5	4	2	2	2	3
Manufacture/Deliver Counterfeit I,II Controlled Narcotic Substance	8	12	10	6	2	5	2	3
Manufacture/Deliver Counterfeit I,II,III Controlled Substance	8	49	169	180	75	53	32	32
Manufacture/Deliver Counterfeit Iv Controlled Substance	3	5	3	3	8	2	3	1
Manufacture/Deliver Sch I,II Controlled Narcotic Substance	350	305	276	234	262	195	119	174
Manufacture/Deliver Sch I,II,III Controlled Substance	190	228	178	340	385	260	351	288
Manufacture/Deliver Sch Iv Controlled Substance	13	21	17	19	19	21	6	12
Obtain Controlled Substance By Fraud, Etc	14	12	7	6	2	2	2	3
Operate or Attempt to Operate a Clandestine Drug Lab	0	0	1	0	0	0	0	0
Operating Or Attempting To Operate Clandestine Drug Laboratories; Offenses; Penalties	162	143	107	135	72	52	25	16
Possession With Intent To Deliver Imitation Controlled Substance	0	0	0	0	0	1	1	4
Possession of Controlled Substance with Intent to Deliver	0	0	0	1	3	1	1	0
Possession Of Precursor To Manufacture Methamphetamine	24	20	18	24	12	5	3	4
Transportation Of Sch I,II Narcotic Controlled Substance	3	6	4	2	1	1	1	0
Transportation Of Sch I,II,III Controlled Substance	1	2	2	1	0	0	1	1
Unlawful manufacture, delivery, transport into state, or possession of fentanyl	0	0	0	0	2	4	5	38
DRUG/NARCOTIC OFFENSES TOTAL	790	814	802	966	893	682	640	675
DUI								
Driving While License Suspended Or Revoked; Driving While License Revoked For Driving Under The Influence	45	54	45	50	57	53	52	41
DUI Causing Serious Bodily Injury	0	0	0	6	18	16	19	18
Dui - Third Offense	59	37	45	53	59	34	25	18
DUI 2nd Offense	0	0	1	0	0	0	0	0
Fleeing From Officer; Vehicle - Dui - Felony	23	25	23	27	15	17	15	16
DUI TOTAL	127	116	114	136	149	120	111	93
EMBEZZLEMENT								
Embezzlement - Banking Institution	8	8	11	6	10	6	11	0
Embezzlement By Carrier Or Other Person	0	4	6	8	11	8	1	5
EMBEZZLEMENT TOTAL	8	12	17	14	21	14	12	5
EXTORTION/BLACKMAIL								
Extortion	1	0	0	1	0	0	0	0
EXTORTION/BLACKMAIL TOTAL	1	0	0	1	0	0	0	0
FRAUD								
Access Computer Fraudulently Obtain Money, Etc.	4	2	4	2	2	1	2	1
Attempt Fraudulent Use, Traffic Credit Card To Purchase Goods	3	3	2	0	1	0	0	0
False Statement/False Representation	0	1	0	0	0	1	1	1
Falsifying Accounts	0	1	1	0	1	1	1	0
Financial Exploitation of an Elderly Person (2-20 Yrs)	0	0	0	0	2	5	4	6
Forgery Credit Card	11	15	10	9	6	7	0	4
Fraud With Access Device - Felony	59	65	63	67	77	75	62	45
Fraudulent Claims to Insurance Companies	2	5	0	3	2	2	0	1
Fraudulent Schemes	18	20	24	25	24	15	14	16
Grand Larceny By False Pretenses	0	0	0	0	2	1	1	0
Misappropriation Of Elderly Person'S Funds (2-10Yrs)	0	4	2	0	4	2	2	2
Misappropriation Of Elderly Person'S Funds (5-15Yrs)	0	0	1	0	0	0	0	1
Obtaining Money, Property Services By False Pretenses	14	15	9	15	15	6	8	10
Taking Identity Of Another Person; Penalty	4	3	3	6	6	4	2	1
Unlawful Expenditure or Dissipation of Funds of An Incapacitated Adult By A Caregiver	3	0	2	2	3	1	2	0
Welfare Fraud - Felony	3	2	3	1	0	1	1	1
FRAUD TOTAL	121	136	124	130	145	122	100	89

Adult Prison Statistics

	FY2015	FY 2016	FY 2017	FY 2018	FY 2019	FY2020	FY2021	FY2022
HOMICIDE								
2nd Offense Of Murder	0	0	1	1	1	2	2	2
Attempt To Commit A Felony Punishable W/Life	2	4	3	3	0	2	0	2
Attempt To Kill Or Injure By Poison	1	1	1	0	1	1	1	0
Convicted Twice Before (Habitual)	16	15	14	10	10	7	7	5
Death Of A Child By Parent, Guardian By Child Abuse	22	20	21	19	20	19	18	19
Dui With Death - Reckless Disregard - Felony	20	26	24	28	24	20	22	21
First Degree Murder	597	653	655	630	648	632	594	583
Involuntary Manslaughter; Penalty	0	0	1	1	1	1	1	1
Murder Of A Child By A Parent, Guardian Or Custodian Or Other Person By Refusal Or Failure To Supply	3	4	4	6	7	8	8	8
Second Degree Murder	187	181	179	183	180	179	172	185
Voluntary Manslaughter	63	65	66	61	62	56	58	53
HOMICIDE TOTAL	911	969	969	942	954	927	883	879
KIDNAPPING/ABDUCTION								
Abduction Of Person, Kidnapping/Concealing Child For Other Purposes	36	36	35	30	25	24	21	20
Abduction Of Person, Kidnapping/Concealing Child W/Purpose Of Defiling	25	27	26	12	22	21	22	18
Abduction Of Person, Kidnapping/Concealing Child	0	1	5	6	13	13	16	13
Penalty For Kidnapping - Life W/Mercy	15	16	18	17	18	14	12	12
Penalty For Kidnapping - Life W/O Mercy	2	2	2	3	3	3	5	4
Penalty For Kidnapping Where Victim Returned Unharmed After Ransom	5	6	4	5	3	2	2	1
Penalty For Kidnapping Where Victim Returned Unharmed Before Ransom Paid	15	17	16	9	9	8	5	4
KIDNAPPING/ABDUCTION TOTAL	98	105	106	82	93	85	83	72
LARCENY/THEFT OFFENSES								
Grand Larceny	351	389	357	378	370	291	267	230
Second Conviction For Petit Larceny	1	1	1	0	1	0	1	0
Shoplifting - 3rd Offense	47	61	68	72	71	69	54	46
LARCENY/THEFT OFFENSES TOTAL	399	451	426	450	442	360	322	276
MOTOR VEHICLE THEFT								
Theft of Rental Vehicle; Penalty	0	0	0	0	1	0	0	0
Unlawful Taking Of Vehicle	0	1	2	0	1	0	2	2
MOTOR VEHICLE THEFT TOTAL	0	1	2	0	2	0	2	2
OTHER								
Accessory	2	0	1	4	1	0	0	0
Aiding Escape	1	0	0	1	2	1	1	0
Altering/Changing Manufacturer'S Serial Number On Motor Vehicle	1	0	1	1	0	1	2	0
An Inmate Of Jail/Corr Facility Possessing Poison, Dangerous Material, Controlled Subs	1	2	3	3	10	11	8	8
Attempt To Commit A Felony Punishable W/Term Less Than Life	194	134	126	96	130	95	98	89
Concealment Of Deceased Human Body	0	1	3	4	3	1	3	2
Conspiracy To Commit A Felony	366	243	201	190	215	141	135	105
Crashes Involving death or personal injuries; Erin's Law	0	0	0	0	0	1	1	2
Crashes Involving serious bodily injuries; Erins Law	0	0	0	0	0	0	0	2
Cruelty To Animals	4	4	4	5	5	6	4	0
Disarming Officer Acting In Official Capacity	5	3	4	1	4	4	3	1
Disinterment Or Displacement Of Dead Body Or Part	1	1	1	1	0	0	0	0
Engaging In Organized Criminal Enterprise	0	0	1	1	1	0	0	0
Entry Of Building Other Than Dwelling	0	0	0	0	0	0	0	1
Escape From Custody Of Division Of Corrections	2	6	4	5	14	15	10	10
Escape From Custody Of The Director Of Juvenile Services	1	0	2	3	4	3	1	3
Escape Of Persons In Custody Of Jail	6	5	9	7	8	4	10	8
Fail Pay Child Support	0	0	1	0	0	0	0	0
Fail To Register/Provide False Info Person Required To Register For 10 Yrs-3Rd Offense (5-25 Yrs)	0	1	1	1	0	0	0	0
Fail To Register/Provide False Info Person Required To Register For Life-2Nd Offense (10-25 Yrs)	0	1	4	5	6	9	11	14
Failure To Appear After Having Been Released On Bond	13	8	11	18	24	19	14	22
Failure To Meet An Obligation To Provide Support To Minor	7	7	7	9	5	2	8	3
Failure To Register/Change Registration Child Abuse	0	1	6	7	7	5	5	4
Failure To Register/Provide False Info As Sexually Violent Predator (2-10 Yrs)	1	3	2	3	2	1	0	1
Failure To Register; Felony Penalty	79	71	70	93	91	74	85	96
Fleeing From Officer; Vehicle - Death - Felony	1	1	1	0	0	0	0	0
Fleeing From Officer; Vehicle - Felony	36	107	114	118	202	201	250	236
Fleeing From Officer; Vehicle - Injury - Felony	1	1	2	0	12	8	5	3
Fleeing With Property Damage	0	0	0	0	0	0	0	1
Home Confinement/Probation Revocation	0	1	1	0	1	0	1	0
Leave Accident Involving Death - Felony	0	2	2	2	0	2	1	0
Malicious Killing Of Animals By Poison	0	1	1	1	0	0	0	0
Motor Vehicle or Special Mobile Equipment without ID	0	0	0	1	1	0	1	0
Obstruct Duties Of Public Official - 2Nd Offense	0	0	0	0	0	1	0	0
Obstructing An Officer	0	0	0	0	0	1	1	1
Obstruction or Removal of Any Part of Railroad	1	0	0	1	0	0	0	0
Offense by Inmate Resulting in 1-5 Yr. Term	1	0	0	0	1	0	2	1
Parole Hold	0	0	1	0	0	1	0	1
Patronizing A Victim Of Sexual Servitude	0	0	0	0	0	0	0	1
Perjury and Subordination of Perjury	0	0	0	0	1	0	0	0
Punishment For Accessory After The Fact	6	0	2	1	2	0	0	1
Punishment For Second or Third Offense of Felony	0	0	0	2	3	3	3	3
Reckless Driving; Penalties	0	1	1	2	6	5	4	0
Removal Out of County of Property Securing Claim	1	0	0	0	0	0	0	0
Retaliate -Other Person	0	1	0	1	0	0	0	1
Retaliate - Public Official	3	7	5	4	2	7	4	5
Revocation of Supervised Release	0	0	0	0	0	2	19	49
Sale to Prohibited Persons	0	0	1	0	0	0	0	0
Sexual Predator Failure To Register; Felony	4	9	17	10	20	15	19	8
Sexual Servitude	0	0	0	0	0	0	1	1
Solicitation To Commit Non Violent Felonies	2	2	0	0	0	0	0	0
Solicitation To Commit Violent Felonies (3-15 Yrs)	0	2	1	1	1	0	0	0
Trespass on State Government Property-With Felonious Intent	0	0	0	1	0	1	2	0
Violating Civil Rights By Violence Or Threat	0	0	0	0	0	1	0	0
OTHER TOTAL	740	626	611	603	784	641	712	683

Adult Prison Statistics

	FY2015	FY 2016	FY 2017	FY 2018	FY 2019	FY2020	FY2021	FY2022
PORNOGRAPHY/OBSCENE MATERIAL								
Distribution And Exhibiting Of Material Depicting	24	22	14	18	22	20	16	18
Employment Or Use Of Minor To Produce Obscene Matter Or Assist In Doing Sexually Explicit Conduct	0	0	2	1	2	1	2	1
Permits Use Of Minors In Filming Sexually Explicit Conduct	1	0	2	9	3	2	3	6
Photographing Minors In Sexually Explicit Conduct	4	5	4	3	2	0	0	1
Preparation, Distribution Or Exhibition Of Obscene Matter To Minor	5	4	3	2	6	7	8	9
Soliciting A Minor Via Computer	18	21	26	40	33	29	30	38
Use Of Obscene Matter With Intent To Seduce Minor-1st Offense	4	1	2	7	5	3	1	1
PORNOGRAPHY/OBSCENE MATERIAL TOTAL	56	53	53	80	73	62	60	74
PROSTITUTION								
Prostitution-2nd Offense	0	2	0	0	0	0	0	0
PROSTITUTION TOTAL	0	2	0	0	0	0	0	0
ROBBERY								
1St Deg Robbery With Weapons Specification/Att. 1St Deg. Robbery With Weapon (20 year & under sentence)	56	25	26	24	24	20	19	13
1St Deg Robbery With Weapons Specification/Att. 1St Deg. Robbery With Weapon (over 20 year sentence)	0	40	35	32	29	25	22	15
1St Deg Robbery/Attempted 1St Deg Robbery (20 year & under sentence)	418	269	270	245	242	190	159	133
1St Deg Robbery/Attempted 1St Deg Robbery (Over 20 year sentence)	0	169	161	184	166	167	157	149
Aggravated Bank Robbery - Weapon Specification (20 year & under sentence)	0	2	2	1	2	1	1	1
Aggravated Bank Robbery - Weapon Specification (over 20 year sentence)	6	5	5	2	2	2	1	0
Bank Robbery	17	17	14	13	12	10	10	9
Battery Police Officers, Etc... 3rd Offense	1	2	0	0	1	1	1	0
Robbery Or Attempted Robbery; Penalties	5	32	43	6	11	11	7	13
Second Degree Robbery	118	132	128	129	116	109	108	92
ROBBERY TOTAL	621	693	684	636	605	536	485	425
SEX OFFENSE, FORCIBLE								
Imposition Of Sexual Intercourse Or Sexual Intrusion On Incarcerated Persons By Corr. Employee	3	2	2	0	0	0	0	1
Parent, Guardian, Custodian Or Other Person In Position Of Trust Allowing Sexual Abuse Of Child	2	0	4	4	2	4	4	3
Rape	1	1	1	0	0	0	0	0
Sending, Distributing, Exhibiting, Possessing, Displaying Or Transporting Material By A Parent, Guardian	1	1	13	14	17	17	13	16
Sex Abuse 1St Deg (6-25 Yrs)	88	89	92	113	75	67	49	40
Sexual Abuse By Parent, Guardian, Custodian Or Other Person In Position Of Trust To A Child	357	355	366	335	399	393	391	391
Sexual Abuse In The First Degree	147	142	139	151	124	107	119	136
Sexual Abuse In The Third Degree	0	0	2	5	1	0	0	0
Sexual Assault In First Deg (25-100Yrs)	40	45	51	53	58	58	65	72
Sexual Assault In The First Degree	258	258	248	241	223	217	198	179
Sexual Assault In The Second Degree	130	128	131	135	133	131	133	130
SEX OFFENSE, FORCIBLE TOTAL	1027	1021	1049	1051	1032	994	972	968
SEX OFFENSE, NON FORCIBLE								
Incest	51	51	46	55	46	39	33	29
Indecent Exposure 3rd or Subsequent Offense	1	0	0	0	0	3	4	3
Mandatory Sentence For Certain Sex Offenses Against Children	0	0	0	0	1	1	1	1
Revocation Of Sex Offender Supervised Release	34	42	57	62	78	72	74	48
Sexual Assault In The Third Degree	151	148	137	132	129	94	89	119
SEX OFFENSE, NON FORCIBLE TOTAL	237	241	240	249	254	209	201	200
STOLEN PROPERTY								
Bringing Into This State, Receiving Or Disposing Of Stolen Property	7	6	8	6	8	3	4	3
Receiving Or Transferring Stolen Goods	38	46	56	44	45	31	32	33
Receiving Or Transferring Stolen Vehicle	25	19	19	26	30	26	20	31
STOLEN PROPERTY TOTAL	70	71	83	76	83	60	56	67
WEAPON LAW VIOLATION								
Carrying Deadly Weapon Without License Or Other Authorization-2nd Offense	2	1	1	0	1	1	1	0
Criminal Use Of Destructive Device, Explosive Mate	1	1	1	1	0	0	0	0
Delivers Firearm, Drugs, Alcohol, Etc To A Defendant In Jail	0	5	2	3	5	4	3	4
False Reports Concerning Bombs Or Other Explosive Devices	0	0	0	0	1	0	0	0
Illegal Possession Of Destructive Device/Explosive	1	0	0	1	2	5	3	3
Persons Prohibited From Possessing Firearms	38	36	32	48	68	73	85	105
Possessing Deadly Weapons on Premises of Education	0	1	0	0	1	1	0	0
Threats Of Terrorist Acts/Conveying False Info Re Terrorist Acts/Committing Terrorist Hoaxes	5	4	5	2	5	3	3	6
Transports Firearm, Drugs, Alcohol, Etc Onto Grounds	1	1	6	10	8	6	3	5
Use or presentation of Firearm during Commission of a Felony; penalties	0	0	0	0	2	13	18	29
Wanton Endangerment Involving Destructive Devices	16	2	2	4	1	3	2	2
WEAPON LAW VIOLATION TOTAL	64	51	49	69	94	109	118	154
GRAND TOTAL	6914	7001	7014	7184	7262	6253	6072	5842

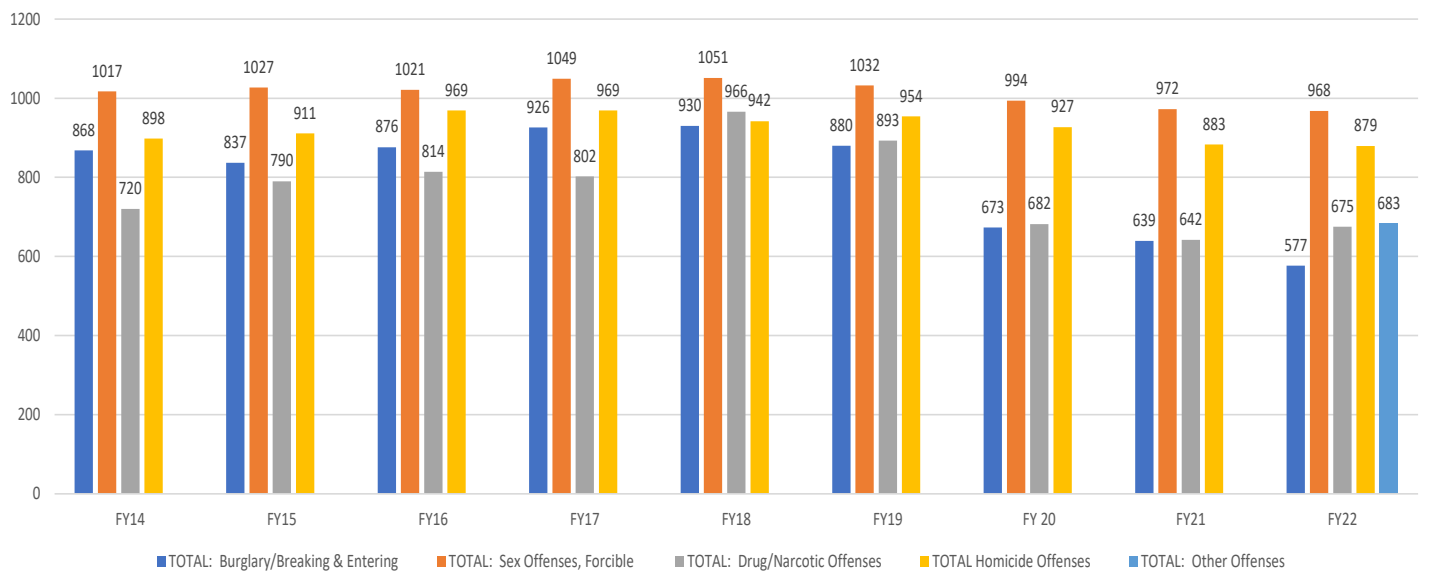
*Note: An error in the 2018 statistics for Attempt to Commit a Felony Punishable with Life-updated in 2019 statistics

Adult Prison Statistics

The following table shows the number and percent of WV prison sentenced offenders by their most serious crime from FY 2014 - FY 2022.

Category	FY 14		FY15		FY 16		FY 17		FY 18		FY 19		FY 20		FY 21		FY22	
	Number	Percent	Number	Percent	Number	Percent	Number	Percent	Number	Percent	Number	Percent	Number	Percent	Number	Percent	Number	Percent
Abduction/Kidnapping	102	1.5%	103	1.5%	109	1.6%	110	1.6%	87	1.2%	96	1%	89	1%	84	1%	74	1%
Arson	50	0.7%	49	0.7%	52	0.7%	44	0.6%	38	0.5%	39	1%	21	0%	31	1%	35	1%
Assault	376	5.5%	347	5.0%	314	4.5%	330	4.7%	368	5.1%	376	5%	337	5%	351	6%	310	5%
Bribery	0	0.0%	0	0.0%	1	0.0%	1	0.0%	3	0.0%	2	0%	3	0%	3	0%	1	0%
Burglary/B&E	868	12.8%	837	12.1%	876	12.5%	926	13.2%	930	12.9%	880	12%	673	11%	639	11%	577	10%
Child Abuse/Neglect	165	2.4%	178	2.6%	180	2.6%	172	2.5%	143	2.0%	154	2%	127	2%	134	2%	141	2%
Counterfeiting/Forgery	218	3.2%	203	2.9%	191	2.7%	191	2.7%	184	2.6%	165	2%	148	2%	134	2%	96	2%
Destruction/Damage/Vandalism of Property	16	0.2%	25	0.4%	21	0.3%	17	0.2%	28	0.4%	19	0%	19	0%	19	0%	18	0%
Drug/Narcotic Offense	722	10.6%	790	11.4%	814	11.6%	802	11.4%	966	13.4%	893	12%	682	11%	642	11%	675	12%
DUI	122	1.8%	127	1.8%	116	1.7%	114	1.6%	136	1.9%	149	2%	120	2%	111	2%	93	2%
Embezzlement	22	0.3%	8	0.1%	12	0.2%	17	0.2%	14	0.2%	21	0%	14	0%	12	0%	5	0%
Extortion/Blackmail	2	0.0%	1	0.0%	0	0.0%	0	0.0%	1	0.0%	0	0%	0	0%	0	0%	0	0%
Fraud	130	1.9%	121	1.8%	136	1.9%	124	1.8%	130	1.8%	145	2%	122	2%	99	2%	89	2%
Homicide	898	13.2%	911	13.2%	969	13.8%	969	13.8%	941	13.1%	954	13%	927	15%	883	15%	879	15%
Larceny/Theft Offenses	373	5.5%	399	5.8%	451	6.4%	426	6.1%	450	6.3%	442	6%	360	6%	322	5%	276	5%
Motor Vehicle Theft	1	0.0%	0	0.0%	1	0.0%	2	0.0%	0	0.0%	2	0%	0	0%	2	0%	2	0%
Other	714	10.5%	740	10.7%	626	8.9%	611	8.7%	604	8.4%	784	11%	641	10%	714	12%	683	12%
Pornography/Obscene Material	40	0.6%	56	0.8%	53	0.8%	53	0.8%	80	1.1%	73	1%	62	1%	60	1%	74	1%
Prostitution	0	0.0%	0	0.0%	2	0.0%	0	0.0%	0	0.0%	0	0%	0	0%	0	0%	0	0%
Robbery	644	9.5%	621	9.0%	693	9.9%	684	9.8%	636	8.9%	605	8%	536	9%	485	8%	425	7%
Sex Offense, Forcible	1017	15.0%	1027	14.9%	1021	14.6%	1049	15.0%	1051	14.6%	1032	14%	994	16%	972	16%	968	17%
Sex Offense, Non Forcible	206	3.0%	237	3.4%	241	3.4%	240	3.4%	249	3.5%	254	3%	209	3%	201	3%	200	3%
Stolen Property	57	0.8%	70	1.0%	71	1.0%	83	1.2%	76	1.1%	83	1%	60	1%	56	1%	67	1%
Weapon Law Violation	39	0.6%	64	0.9%	51	0.7%	49	0.7%	69	1.0%	94	1%	109	2%	118	2%	154	3%
Totals	6782	100.0%	6914	100.0%	7001	100.0%	7014	100.0%	7184	100.0%	7262	100%	6253	100%	6072	100%	5842	100%

WVDCR Top Crimes by Prison Sentenced Offenders:
FY 2014-FY2022



Adult Prison Statistics

Offender Demographics

Sentence Type

Sentence Type	#	%
Habitual Life	47	.80%
Life With Mercy	275	4.71%
Life Without Mercy	295	5.05%
Regular	5225	89.44%
Grand Total	5842	100%

The table above shows inmates by Sentence Type as of June 30, 2022. Life with mercy and life without mercy sentences are typically for first degree murder. However, kidnapping offenses can carry a life without mercy sentence as well. Habitual life offenders are serving life with mercy sentences for repeat offenses. This table includes all WVDCR prison sentenced inmates.

Security Classification

Security Class	#	%
Community	277	5.83%
Minimum	837	17.61%
Medium	2716	57.14%
Close	485	10.20%
Maximum	297	6.25%
Receiving/Intake	141	2.97%
Grand Total	4753	100%

The security classification breakdown is for those inmates held in WVDCR prisons on June 30, 2022. Inmates classified as Receiving/Intake have not been through the formal classification process and are still assigned to an intake/diagnostic unit. This table **does not** include felons housed in the regional jails sentenced to prison. The remaining four tables on this page depict demographic information for inmates sentenced to the custody of prison, but **does not** include those housed in regional jails.

Education Level

Education Category	#	%
Did Not Graduate High School	2187	46.01%
High School Diploma	2157	45.38%
Post High School Education	393	8.27%
Unknown	16	.34%
Grand Total	4753	100%

Race & Gender

Race	Gender	#	%
American Indian/Alaska Native	M	5	.11%
	F	1	.02%
Asian	M	0	.00%
	F	0	.00%
Black	M	546	11.49%
	F	30	.63%
Hispanic or Latino	M	27	.57%
	F	2	.04%
Multi-Racial or Other	M	35	.74%
	F	2	.04%
Native Hawaiian or Pacific Islander	M	1	.02%
	F	0	.00%
White	M	3617	76.10%
	F	487	10.25%
Grand Total		4753	100%

Age Category

Age Category	#	%
Under 20	37	.06%
20 - 29	756	15.91%
30 - 39	1539	32.38%
40 - 49	1246	26.22%
50 - 59	715	15.04%
60 - 69	360	7.57%
70 - 79	117	2.46%
80 and Over	17	.36%
Grand Total	4753	100%

Classes Completed

Class /Programs Category	Number Completing Class
Affective Social Programs	2397
Crime	245
Education Classes	5783
Jails	8
LifeSkills	10
NVOPP Cognitive	325
NVOPP Substance Abuse	120
Parole	89
Substance Abuse Classes	1037
Vocational Classes	254
Total Classes Completed	10268

Jail Statistics

TOP 30 CHARGES FY 2022	
CAPIAS	4936
DOMESTIC BATTERY	3246
OBSTRUCTING	2537
FUGITIVE FROM JUSTICE	2119
POSS C/S	1758
TRESPASSING	1640
POSSESSION OF CONTROLLED SUBSTANCE	1484
DUI	1407
GRAND LARCENY	1363
DOMESTIC ASSAULT	1288
PROBATION VIOLATION	1200
CONSPIRACY	1197
OBSTRUCTING AN OFFICER	1103
DRIVING REVOKED FOR DUI	1085
DESTRUCTION OF PROPERTY	1069
DISORDERLY CONDUCT	1027
PETIT LARCENY	975
NO INSURANCE	964
POSS W/INTENT	959
WARRANT	926
PUBLIC INTOXICATION	894
SEE HARD COPY	856
BURGLARY	853
BAILPIECE	688
SHOPLIFTING	677
BATTERY	664
HOME CONFINEMENT VIOLATION	657
PROHIBITED PERSON W/FIREARM	649
DRIVING SUSPENDED	642
PAROLE HOLD	601

TOP 25 DRUG AND ALCOHOL RELATED CHARGES FY 2022	
POSS C/S	1758
POSSESSION OF CONTROLLED SUBSTANCE	1484
DUI	1407
DRIVING REVOKED FOR DUI	1085
POSS W/INTENT	959
PUBLIC INTOXICATION	894
DRIVING SUSPENDED	642
POSSESSION WITH INTENT	455
POSSESSION WITH INTENT TO DELIVER A CONTROLLED SUBSTANCE	434
AGGRAVATED DUI	379
DUI 1ST OFFENSE	379
SIMPLE POSSESSION	339
POSSESSION OF METH	321
DUI 2ND OFFENSE	294
Manufacture/Deliver Sch I,ii,iii Controlled Substance	279
DRIVING REVOKED FOR DUI 3RD	275
POSSESSION	244
DELIVERY OF A CONTROLLED SUBSTANCE	227
POSS MARIJUANA	188
DRIVING REVOKED FOR DUI 2ND	164
DUI WITH DRUGS	151
Manufacture/Deliver Sch I,ii Controlled Narcotic Substance	151
POSSESSION OF MARIJUANA	146
POSSESSION WITH INTENT TO DELIVER METH	141
DUI CONTROLLED SUBSTANCE	130

*Data based off of admissions and include: Convicted felons and misdemeanors, Division of Corrections Inmates, Federal Sentenced and Pretrial Offenders and Pre-trial Felons and Misdemeanors.

Jail Statistics

Admissions and Releases

FACILITY	2015		2016		2017		2018		2019		2020		2021		2022	
	ADMISSIONS	RELEASES	ADMISSIONS	RELEASES	ADMISSIONS	RELEASES	ADMISSIONS	RELEASES	ADMISSIONS	RELEASES	ADMISSIONS	RELEASES	ADMISSIONS	RELEASES	ADMISSIONS	RELEASES
Central	3050	3039	2796	2744	3066	2861	2929	2734	2971	2759	2531	2427	2475	2170	2214	2018
Eastern	5527	5515	5404	5297	5507	5247	5475	5257	4990	4849	4434	4361	4565	4349	4469	4292
North Central	5677	5599	5604	5330	6187	5612	7134	6311	5937	6264	4594	5369	4427	4764	4619	4948
Northern	3447	3384	3070	3055	3053	2800	3154	2899	3361	3089	3011	2856	3207	3002	3038	2768
Potomac Highlands	2410	2483	1850	1964	2402	2247	2352	2195	2228	2102	1854	1796	2005	1842	1881	1825
South Central	6270	6245	6684	6518	7233	6647	7352	6755	7577	6934	5788	5379	4986	4576	5230	4794
Southern	6534	6447	6749	6342	6786	6258	7400	6777	7050	6634	6489	6122	6094	5656	5940	5454
Southwestern	3451	3524	3570	3519	3159	2990	3421	3281	3525	3300	3598	3498	3293	3115	3246	3116
Tygart Valley	2751	2803	2631	2578	3250	3017	3105	2793	3271	2999	2981	2887	2913	2616	2702	2433
Western	6293	6163	6457	6087	6685	6286	6431	5941	6141	5766	4863	4860	4525	4116	4451	4120
TOTAL	45,410	45,202	44,815	43,434	47,328	43,965	48,753	44,943	47,051	44,696	40,143	39,555	38,490	36,206	37,790	35,768

RACE	MALE	FEMALE	BLANK	TOTAL
BLANK	6	2	4	12
American Indian/Alaska Native	11	4	0	15
Asian	34	8	0	42
Black	3684	657	0	4341
Hispanic or Latino	490	43	0	533
Multi-Racial or Other	185	51	0	236
Native Hawaiian or Pacific Islander	14	1	0	15
White	23871	8725	0	32596
TOTAL	28295	9491	4	37790

AGE GROUP	TOTAL FY 2022
BLANK	6
Under 20	654
20-29	9425
30-39	13351
40-49	9179
50-59	3910
60-69	1105
70+	160
TOTAL	37790

*The statistics on this page include: Convicted felons and misdemeanors, Division of Corrections Inmates, Federal Sentenced and Pretrial Offenders and Pretrial Felons and Misdemeanors.

Jail Statistics

Average Daily Inmate Population by Fiscal Year

REGIONAL JAIL FACILITY	FY 10	FY 11	FY 12	FY 13	FY 14	FY 15	FY16	FY17	FY18	FY19	FY20	FY21	FY22
Central	279	318	324	319	308	310	310	308	353	355	355	425	403
Eastern	372	423	449	489	429	399	392	475	514	478	421	532	536
North Central	529	574	631	635	587	575	615	658	694	787	794	855	852
Northern	313	324	351	320	285	267	299	307	321	328	345	426	376
Potomac Highlands	258	293	313	303	256	226	257	295	306	288	280	312	310
South Central	457	499	514	529	474	451	478	532	530	580	521	569	554
Southern	491	524	539	556	576	579	581	555	603	633	642	717	645
Southwestern	389	415	470	505	417	410	400	444	511	482	479	520	491
Tygart Valley	363	391	446	503	449	406	444	500	526	515	493	540	491
Western	533	559	609	642	578	587	630	611	736	726	664	769	649
TOTAL	3,984	4,320	4,646	4,801	4,359	4,210	4,406	4,685	5,095	5,172	4,994	5,665	5,307

FY 2022 Average Daily Institutional Inmate Population Report

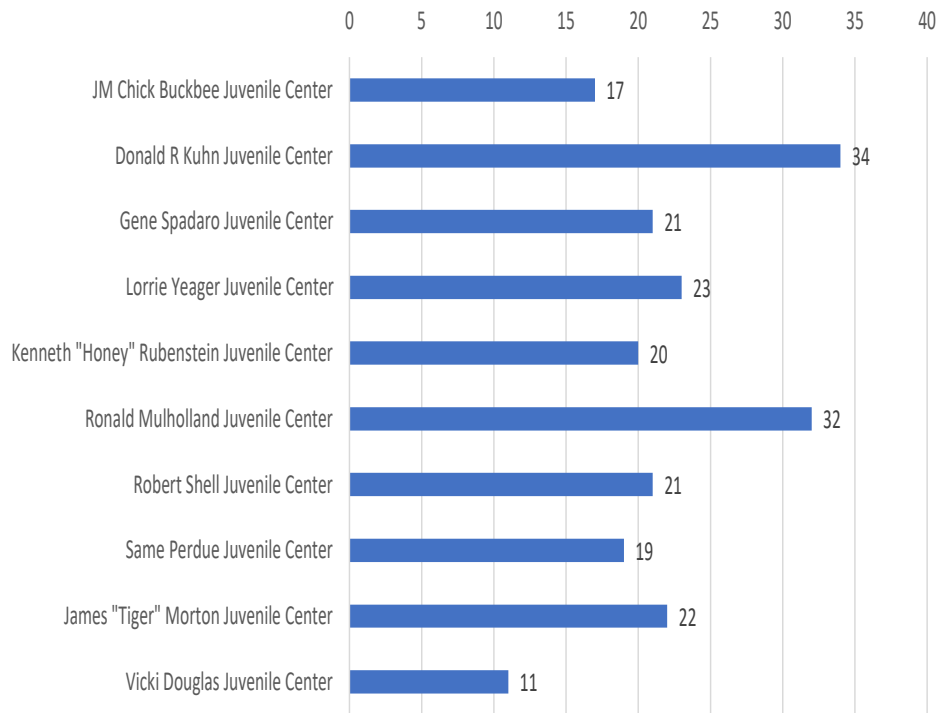
RJA FACILITY	DOC Division of Corrections		FP Federal Inmate Pretrial		FS Federal Inmate Sentenced		PTM Pretrial Misdemeanor		CM Convicted Misdemeanor		PTF Pretrial Felon		CF Convicted Felon		Average Daily Total
	Males	Females	Males	Females	Males	Females	Males	Females	Males	Females	Males	Females	Males	Females	
CRJ	108	12	18	0	5	0	27	9	25	7	117	24	42	9	403
ERJ	165	9	60	8	0	0	37	13	29	5	139	32	34	5	536
NCRJ	118	15	17	7	1	0	79	28	38	11	337	79	104	18	852
NRJ	141	12	37	3	0	0	26	8	12	2	92	22	18	3	376
PHRJ	139	6	4	0	0	0	23	7	10	1	73	18	22	7	310
SCRJ	173	14	57	4	3	0	46	12	9	0	167	27	35	7	554
SRJ	116	15	21	2	0	1	63	16	18	2	245	58	72	16	645
SWRJ	202	14	0	0	0	0	30	12	10	2	151	41	24	5	491
TVRJ	133	27	22	5	1	0	36	8	20	3	148	31	44	13	491
WRJ	228	31	14	0	1	0	38	10	16	3	196	32	64	16	649
TOTAL	1523	155	250	29	11	1	405	123	187	36	1665	364	459	99	5307
Total combined	1678		279		12		528		223		2029		558		5307

*The statistics on this page include: Convicted felons and misdemeanors, Division of Corrections Inmates, Federal Sentenced and Pretrial Offenders and Pretrial Felons and Misdemeanors.

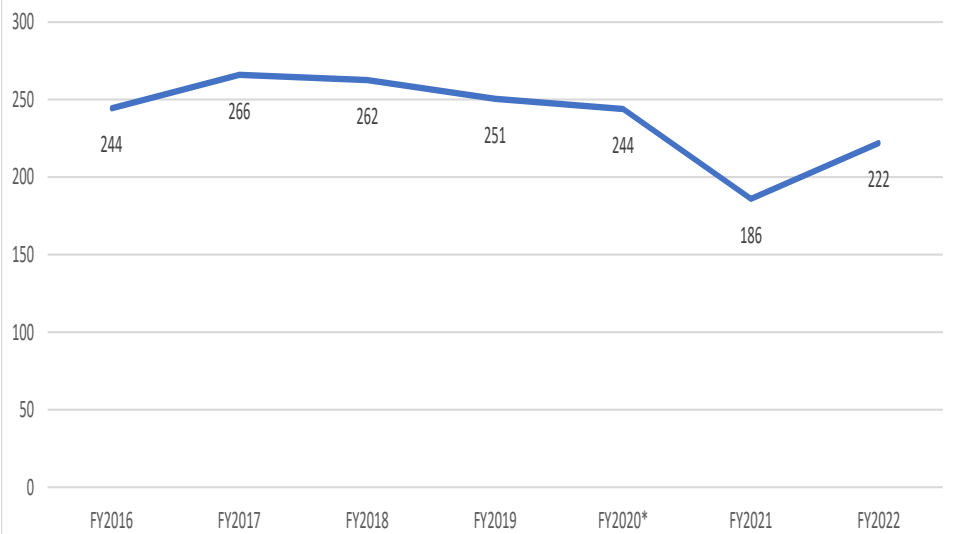
Juvenile Services Statistics

County	Count on 6/30/22
Barbour	6
Berkeley	10
Boone	1
Braxton	5
Brooke	6
Cabell	23
Calhoun	3
Clay	3
Doddridge	1
Fayette	4
Gilmer	8
Grant	3
Greenbrier	3
Hampshire	5
Hancock	6
Hardy	2
Harrison	6
Jackson	5
Jefferson	4
Kanawha	19
Lewis	4
Lincoln	0
Logan	3
Marion	6
Marshall	6
Mason	1
McDowell	2
Mercer	15
Mineral	4
Mingo	2
Monongalia	9
Monroe	1
Morgan	0
Nicholas	2
Ohio	1
Pendleton	1
Pleasants	3
Pocahontas	1
Preston	3
Putnam	3
Raleigh	6
Randolph	5
Ritchie	2
Roane	5
Summers	6
Taylor	3
Tucker	2
Tyler	0
Upshur	5
Wayne	0
Webster	4
Wetzel	0
Wirt	0
Wood	9
Wyoming	2
Grand Total	239

FY 22 Juvenile Services Residential Ave. Daily Population



Average Daily Population Juvenile Services Residential
FY 2016-2022

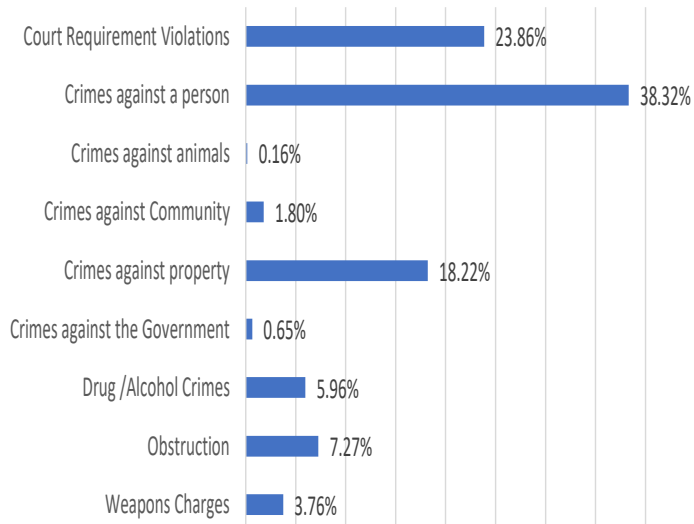


*FY2020 updated

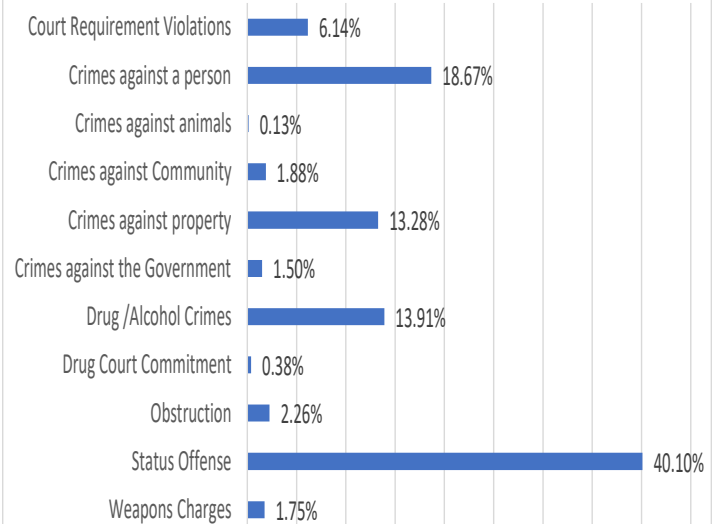
Juvenile Services Statistics

Bookings FY2022

Residential Booking Charges FY22

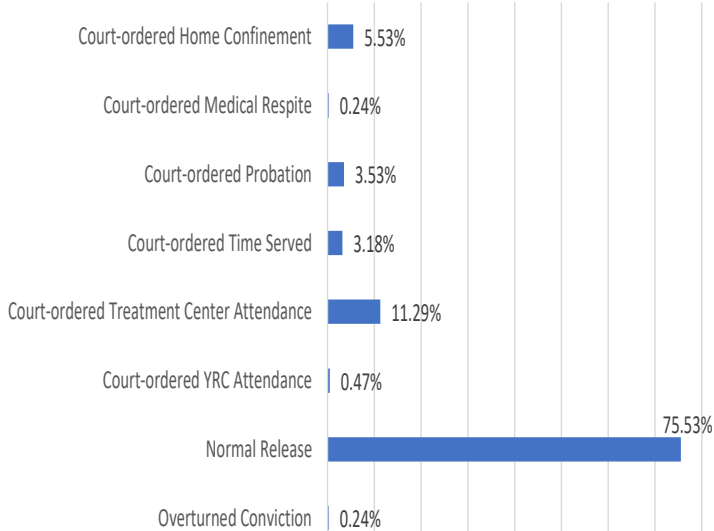


Non Residential Booking Charges FY 22

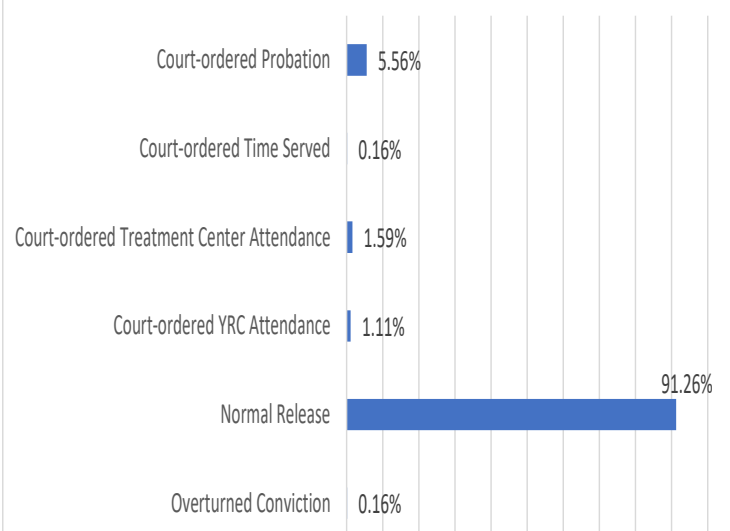


Discharges FY 2022

Residential Discharges FY 22



Non Residential Discharges FY 2022



Juvenile Services Statistics

WV BJS Count on 6/30/22

Offense Category	Charge	Total Count
Court Requirement Violations	Capias	7
	Probation Violation	39
	Violate Home Conf/Alternative Sentence	4
Court Requirement Violations Total		50
Crimes against a person	Arson: 1st Degree	1
	Assault on Police Officer	1
	Assault Or Battery: Domestic 2nd	1
	Assault: Domestic	10
	Assault: Public Official Unlawful	1
	Assault: School Employee	1
	Assault: Simple	5
	Battery	19
	Battery: Against Officer/Official/Employ	1
	Battery: Domestic	21
	Battery: Unlawful Against Officer/Employ	1
	Child Pornography	1
	Domestic Violence: No Injury/Weapon	8
	Incest	2
	Kidnapping	1
	Malicious Wounding	2
	Manslaughter: Involuntary	1
	Murder: 1st Degree Or Attempt	7
	Murder: 2nd Degree Or Attempt	1
	Robbery: 1st Deg W/Violence To Person	1
	Robbery: 1st Deg W/Weapon	2
	Sex Offense: Sexual Abuse 1st Degree	20
	Sex Offense: Sexual Abuse 2nd Degree	1
	Sex Offense: Sexual Abuse 3rd Degree	1
	Sex Offense: Sexual Assault 1st Degree	4
	Sex Offense: Sexual Assault 2nd Degree	7
	Sex Offense: Sexual Assault 3rd Degree	4
	Strangulation	2
	Telephone: Obscene/Harass/Threat/Anonym	1
Crimes against a person Total		128
Crimes against property	Breaking & Entering	2
	Burglary: Daytime W/O Breaking	2
	Burglary: Nighttime	3
	Destruction Of Property	14
	Entering w/o Breaking	1
	Fraud: Counterfeit Credit Card	1
	Grand Theft-Auto	1
	Joyriding	1
	Larceny: Grand	6
	Larceny:Petit <\$1000 Auto/Other	1
	Stolen Goods: Poss/Rec/Tranf	1
	Theft: Leased/Rented Vehicle	1
	Threats of Terrorist Acts (61-6-24(b))	5
Crimes against property Total		39
Drug /Alcohol Crimes	Cont Sub: Mfg/Dis/OPos W/Int Sched Iv	1
	Cont Sub: Mfg/Dist/Pos W/Int (I/II)	1
	Drug: Simple Possession	1
	Possession of Marijuana	8
	Possession of Methamphetamines	1
Drug /Alcohol Crimes Total		12
Obstruction	Escape: Official Custody	1
	Escape:Entice/Aid/Abet From Youth Facility	1
	Obstructing: Officer	1
Obstruction Total		3
Weapons Charges	Brandishing Deadly Weapon	1
	Poss Deadly Weap On School Grounds/Bus	1
	Poss. Deadly Weapons/School Prop	1
	Weapon: Deadly Poss By Minor Concl/Open	2
	Wanton Endangerment: Involving Firearm	2
Weapons Charges Total		7
Grand Total		239

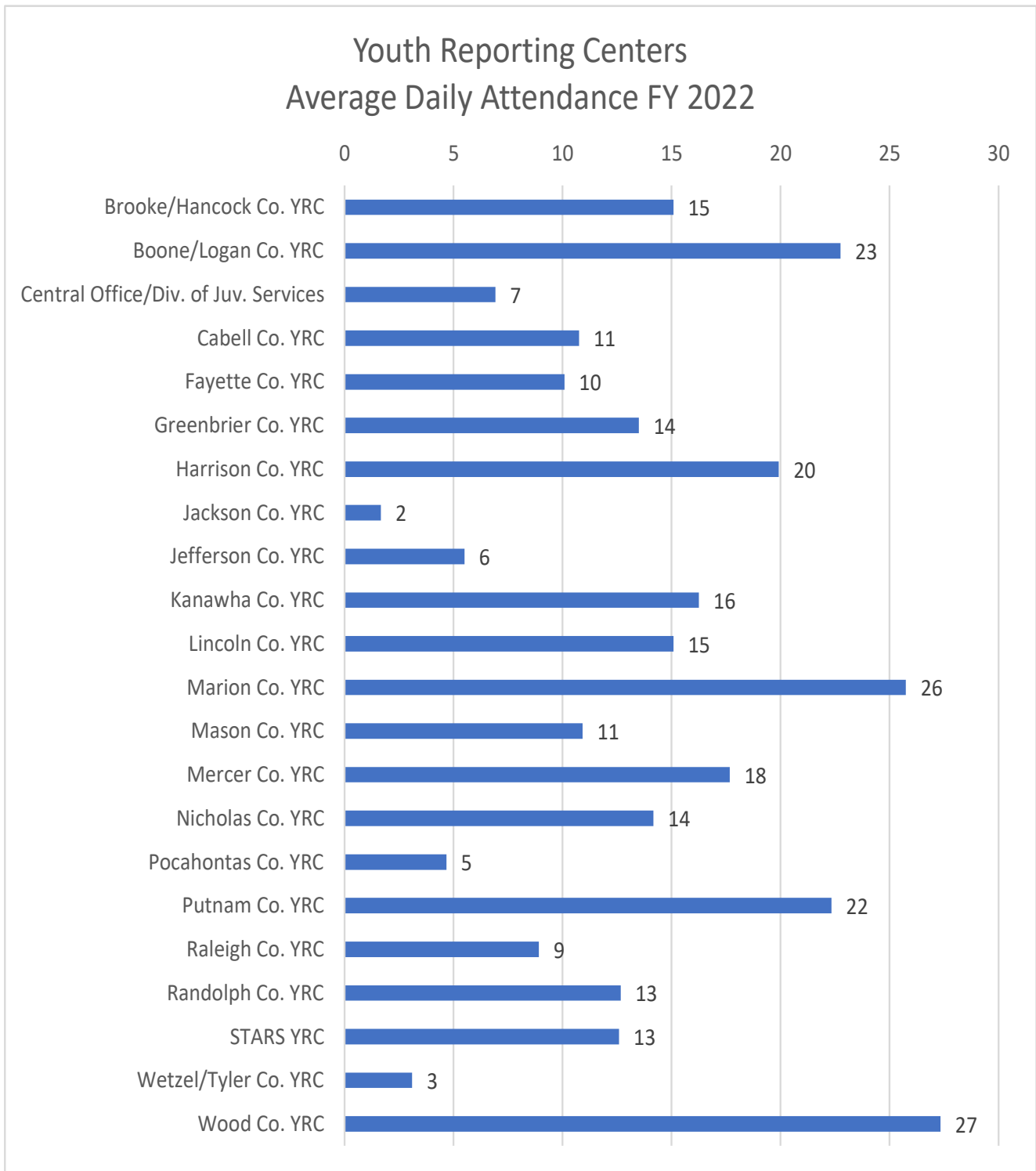
WV Bureau of Juvenile Services: Residents by Crime Category 6/30/22		
Crime Category	Count	Percentage
Court Requirement Violations	50	20.92%
Crimes Against Person	130	54.39%
Crimes Against Property	39	16.32%
Drug/Alcohol Crimes	12	5.02%
Obstruction	3	1.26%
Weapon Charges	5	2.09%
Grand Total	239	100.00%

WV Bureau of Juvenile Services: Residents by Race/Gender on 6/30/22		
Gender	Count	Percentage
Female	46	19.25%
Male	193	80.75%
Grand Total	239	100.00%
Race	Count	Percentage
Asian	1	0.42%
Black Non-Hispanic	21	8.79%
Native Hawaiian/Pacific Islander	1	0.42%
Other	10	4.18%
Other - Hispanic	4	1.67%
White Hispanic	4	1.67%
White Non-Hispanic	198	82.85%
Grand Total	239	100.00%

WV Bureau of Juvenile Services: Residents by Age on 6/30/22		
Age	Count	Percentage
10	1	0.42%
11	1	0.42%
12	6	2.51%
13	16	6.69%
14	28	11.72%
15	34	14.23%
16	47	19.67%
17	72	30.13%
18	25	10.46%
19	4	1.67%
20	5	2.09%
Grand Total	239	100.00%

*Each juvenile is represented only once, by their most serious crime.

Juvenile Services Statistics



WV DCR Employee of the Year

Sergeant Timothy Tibbs is being recognized as the WV Division of Corrections and Rehabilitations Employee of the Year 2021. SGT Tibbs has consistently exhibited the highest degree of professionalism and work ethic since his employment with North Central Regional Jail and Correctional Facility (NCRJ&CF). This past year, Sgt. Tibbs was given the mission to work in the Segregation Unit as the Segregation Sergeant to enhance the security and safety of the unit. Sgt. Tibbs spearheaded the mission and made significant changes in the unit whereas four sections in the unit received new paint, all showers in the Pod received new paint which improved the Inmate population morale in and of itself. Sgt. Tibbs' constant initiative to conduct random searches throughout the jail has resulted in countless weapons and drug finds, which has made the facility safer for the staff and inmates.

Sgt. Tibbs was recently given another mission to create a step-down segregation unit, whereas he took the initiative to find an Inmate crew to clean and paint the section. Once initial painting was completed Sgt. Tibbs suggested painting motivational terms throughout the section to encourage behavior modification with the inmates that would be housed there. Sgt. Tibbs is constantly on the move ensuring that his units clean, sanitized, and maintenance issues are addressed in a timely manner. He has an innate ability to lead and has also made it his mission to mentor new staff. Finally, Sgt. Tibbs' integrity is beyond reproach and has gained the utmost respect of his subordinates, leaders, and peers alike. Sgt. Tibbs is to be commended for his performance and actions during the past year and reflects great credit upon himself, the North Central Regional Jail and the West Virginia Division of Corrections and Rehabilitation.

Betsy Jividen, Commissioner, WVDCR



Pictured left to right:

WV DCR Commissioner Betsy Jividen, North Central Regional Jail Sgt. Timothy Tibbs and Marvin Plumley, Asst. Commissioner for the Bureau of Prisons and Jails.

FACILITY	EOY NOMINEE
ACC	Jonathan Viney
BCC	David Thomas
CBJC	William Currence; James Shockey
CCC	Mat Sorenson
CENTRAL OFFICE	CJ Rider
CID	Earl Haynes
CRJ	Danny Masley
DCC	Dave Beverage
DRKJC	Darren Holley
ERJ&CF	James Smith
GSJC	Amber Montgomery
HCC	Phillip Nixon
KHRJC	Rick Miller
LCC	Stephen Roush
LYJC	Alex Casto
MCD/ST.CC	Kenneth Brown
MOCC	Dwayne "Eddie" McGraw
NCRJ	Timothy Tibbs
NRJ&CF	Tyler Cox
PAROLE SERVICES	Brittany Johnson
PBCC	Melinda Dalrymple
PCC	John Greynolds
PHRJ	Bradley Racey
PRISON INDUSTRIES	Jeff Kincaid
RSJC	Cody Ferley
SCC	Christine Ash
SCRJ	Thomas Scott
SMCC	Lee Bowe
SPECIAL OPS	Mike Buzzard
SPJC	Gary Patton
SRJ	Richard Ward
SWRJ	Elba Frye
TMJC	Christopher Gibson
PUTNAM COUNTY YRC	Michael "Steve" Young
TVRJ	Timothy Lindsay
VDJC	Debra Dodson
WRJ	Stanley Jarvis
WVCA	Robert Borders

WV DCR Facility Directory

WVDCR Facilities List					
Anthony CC ACC		Beckley CC and Jail BCC		Charleston CC and Jail CCC	
313 Anthony Center Dr. White Sulphur Springs, WV 24986		111 S. Eisenhower Dr. Beckley, WV 25801		1356 Hansford St. Charleston, WV 25301	
<i>Rob Neal</i>	536-3911 FAX: 536-3916	<i>Jean Paul DeJarnette</i>	256-6780 FAX: 256-6782	<i>Pamela G Baldwin</i>	340-6921 FAX: 558-1537
Denmar CC and Jail DCC		Huttonsville CC and Jail HCC		Lakin CC and Jail LCC	
4319 Denmar Rd. Hillsboro, WV 24946		PO Box 1 Huttonsville, WV 26273		11264 Ohio River Rd. West Columbia, WV 25287	
<i>Jason Collins</i>	653-4201 FAX: 653-4855	<i>Shelby Searls</i>	335-2291 FAX: 335-4256	<i>J.D. Sallaz</i>	674-2440 FAX: 674-6199
Martinsburg CC and Jail MCC		Mt. Olive CC and Jail MOCC		Northern CF NCC	
38 Grapevine Rd. Martinsburg, WV 25401		1 Mountainside Way Mt. Olive WV 25185		112 Northern Regional Correctional Dr. Moundsville, WV 26041	
<i>Didymus Tate</i>	267-0156 FAX: 267-0196	<i>Acting: Jonathan Frame</i>	442-7213 FAX: 442-7225	<i>Shawn Straughn</i>	843-4067 FAX: 843-4073
Ohio Co. CC and Jail OCCC		Parkersburg CC and Jail PBCC		Pruntytown CC and Jail PCC	
1501 Eoff St. Wheeling, WV 26003		225 Holiday Hills Dr. Parkersburg, WV 26104		PO Box 159 Grafton, WV 26354 Records FAX: 265-6130	
<i>Shawn Straughn</i>	238-1007 FAX: 238-1008	<i>Aaron Westfall</i>	420-2443 FAX: 420-2477	<i>George Trent</i>	265-6111 FAX: 265-6120
Saint Marys CC and Jail SMCC		Salem CC and Jail SCC		Stevens CC / McDowell Co. MCDO	
2880 N. Pleasants Hwy. St. Marys, WV 26170		7 Industrial Blvd. Industrial, WV 26426 Crt. Ords FAX: 782-4285		795 Virginia Ave. / 50 Court St. Welch, WV 24801 436-8530 FAX: 436-8565	
<i>Russell Maston</i>	684-5500 FAX: 684-5506	<i>John Anderson</i>	782-2371 FAX: 782-4816	<i>R.S. Mutter</i>	436-5420 FAX: 436-5413
Central RJ and CF CRJ		Eastern RJ and CF ERJ		Northern RJ NRJ	
1255 Dyer Hill Rd. Sutton, WV 26601		94 Grapevine Rd. Martinsburg, WV 25405		112 Northern Regional Correctional Dr. Moundsville, WV 26041	
<i>Harvey Hawkins</i>	765-7904 FAX: 765-3341	<i>Didymus Tate</i>	267-0046 FAX: 267-0049	<i>Shawn Straughn</i>	843-4067 FAX: 843-4089
North Central RJ and CF NCRJ		Potomac Highlands RJ and CF PHRJ		South Central RJ and CF SCRJ	
1 Lois Ln. Greenwood, WV 26415		355 Dolan Dr. Augusta, WV 26704		1001 Centre Way Charleston, WV 25309	
<i>Joe Wood</i>	873-1384 FAX: 873-1381	<i>Travis Myers</i>	496-1275 FAX: 496-7591	<i>Ronnie Thompson</i>	558-1336 FAX: 558-7307
Southern RJ and CF SRJ		Southwestern RJ and CF SWRJ		Tygart Valley RJ and CF TVRJ	
1200 Airport Rd. Beaver, WV 25813		1300 Gaston Caperton Dr. Holden, WV 25625		400 Abbey Rd. Belington, WV 26250	
<i>Acting: Donnie Ames</i>	256-6726 FAX: 256-6739	<i>Acting: Hansford Slater</i>	239-3032 FAX: 239-3079	<i>Bryan Lanham</i>	637-0382 FAX: 637-0289
Western RJ and CF WRJ		Donald R. Kuhn JC DRK		Gene Spadaro JC GSJC	
1 O'Hanlon Pl. Barboursville, WV 25504		1 Lory Pl. Julian, WV 25529		106 Martin Dr. Mt. Hope, WV 25880	
<i>Carl Aldridge</i>	733-6821 FAX: 733-6867	<i>Jeremy Dolin</i>	369-2976 FAX: 369-2991	<i>Timothy Meadows</i>	877-6890 FAX: 877-6929
J.M. "Chick" Buckbee JC CBJC		Kenneth "Honey" Rubenstein JC RC		Lorrie Yearger Jr. JC LYJC	
144 Jerry Ln. Augusta, WV 26704		141 Forestry Camp Rd. Davis, WV 26260		907 Mission Dr. Parkersburg, WV 26101	
<i>Keith McDaniel</i>	496-1341 FAX: 496-1475	<i>Dan Dilly</i>	259-5241 FAX: 259-4851	<i>Travis L. White</i>	420-4860 FAX: 420-4861
Robert L. Shell JC RSJC		Ronald C. Mulholland JC RMJC		Sam Perdue JC SPJC	
2 O'Hanlon Pl. Barboursville, WV 25504		PO Box 6041 Wheeling, WV 26003		843 Shelter Rd. Princeton, WV 24739	
<i>Paul Stump</i>	948-2190 FAX: 733-6827	<i>Linda Scott</i>	232-3441 FAX: 233-3371	<i>Gary Patton</i>	425-9721 FAX: 487-5543
James H. "Tiger" Morton JC TMJC		Vicki V. Douglas JC VDJC		WV Corrections Academy WVCA	
60 Manfred Holland Way Dunbar, WV 25064		900 Emmett Rousch Dr. Martinsburg, WV 25401		103 Academy Dr. Glenville, WV 26351	
<i>David Murphy</i>	766-2616 FAX: 766-2687	<i>Lucas Roper</i>	267-0164 FAX: 267-0168	<i>Scott Patterson</i>	462-3044 FAX: 462-3052
				Abbreviations:	
				Correctional Center : CC	
				Correctional Facility : CF	
				Juvenile Center : JC	
				Regional Jail : RJ	

WV DCR Parole Services Directory

Region 1		Director of Parole Robert Arnold	Region 2		
Huntington Office (304) 528-5515 801 Madison Avenue, Rm 200 Huntington, WV 25704			Charleston Office (304) 558-3597 1339 Plaza East Charleston, WV 25301		Logan Office (304) 792-7218 1103 George Kostas Drive, St 200 Logan, WV 25601
100 – Kaitlin Watson (RD) 101 – Brittany Rinehart (Williams) OA – Robin Murphy 102 – Chad Starcher 103 – Joshua Vance 104 – John Smith 105 – Justin Wallace 106 – Russell Nuckles 107 – John Clagg 108 – Matthew Hill 109 – Hali Hensley			200 – Kaitlin Watson (Acting RD) 220 – Rebecca Harrison 201 – Roshana Gray 221 – John Tackett 202 – Garrie White 222 – Laura Toler* – Reports to RD 800 203 – Derek Stotts 204 – Tyler Spurlock 205 – Eli DesRocher 206 – Robert Nichols 207 – Brett Murray OA – Mary Ashby OA – VACANT		
Region 3			Region 4		
Beckley Office (304) 256-6950 3225 Robert C. Byrd Drive Beckley, WV 25801	Lewisburg Office (304) 647-7545 765 South Jefferson Street, St C Lewisburg, WV 24901		Princeton Office (304) 425-7487 159 Davis Street Princeton, WV 24739	Welch Office (304) 436-3851 110 Park Avenue, Suite 111 Welch, WV 24801	
300 – Jeremy Napier (RD) 301 – Robert Sovine 320 – Sarah Burdette 302 – VACANT 304 – Anita Payne 305 – Hannah Blankenship 306 – Brandi Otey OA – Edith Stewart OA – Lana Pritt			400 – Jill Bryant (RD) 420 – James DeWitt 401 – Irisca Leggett 421 – Ashlee Spencer 402 – Georgetta Muncy 404 – Erica Martine 405 – William Hicks 406 – Chris Webb OA – Angela Garrett OA – Miranda West		
Region 5			Region 6		
Parkersburg Office (304) 420-4630 225 Holiday Hills Dr, Suite 1 Parkersburg, WV 26104	Wheeling Office (304) 238-1030 100 17 th Street Wheeling, WV 26003		Elkins Office (304) 637-0379 1513 Harrison Avenue, Unit 27 Elkins, WV 26241	Clarksburg Office (304) 627-2308 215 West Main Street Clarksburg, WV 26301	
500 – Joshua Lott (Acting RD) 521 – Melissa Kirkbride 501 – Jeff Dyke 522 – Bradley Goddard 502 – Roger Martin 523 – Shaun Crago 503 – Clarissa Hill 524 – Rebecca Parks 520 – Nathan Deuley 540 – Jordan Vlach OA – Loretta Martin OA – Beth Quinn			600 – Aaron Linn (RD) 620 – Clayton Collett 601 – Allen Vanscoy 621 – VACANT 602 – Shari Wince 622 – VACANT 603 – Erin Hollen 623 – Adam Lewis 604 – Brooke Riffe 624 – Andrew Richards 625 – Phillip Poling OA – Kelly Foreman		
Region 7			Region 8		
Martinsburg Office (304) 267-0055 1520 Winchester Avenue Martinsburg, WV 25405	Moorefield Office (681) 271-2091 150 Robert C. Byrd Industrial Park Rd. Moorefield, WV 26836	Enhanced Supervision			
700 – Brittany Johnson (Acting RD) 720 – Joshua Myers 701 – Brittany Johnson 721 – Ryan Weese 702 – VACANT 722 – Kristi Weasenforth 703 – VACANT 704 – Jessica Marsh 705 – Angela Thompson 706 – Maurice Gill OA – Ava McRobie OA – VACANT		800 – Bryan Thompson* (RD) 801 – David Toler 802 – Bryan Ware 803 – Ryan Beals 804 – Calvin Lease 805 – Joe Hall 806 – Joshua Lott 807 – Melissa Richmond 808 – Brian Templeton OA – Eugenia Russell	Elkins Parole Office Beckley Parole Office Clarksburg Parole Office Charleston Parole Office Martinsburg Parole Office Princeton Parole Office Parkersburg Parole Office Wheeling Parole Office Huntington Parole Office Elkins Parole Office		