

# FY 2020 Annual Report

## *WV Division of Corrections And Rehabilitation*

*Jim Justice, Governor*

*Jeff S.Sandy, CAMS, CFE, Secretary of DHS*

*Betsy Jividen, WVDCR Commissioner*





January 2021

Honorable Jim Justice  
Governor of West Virginia

Capitol Building  
1900 Kanawha Blvd., East  
Charleston, WV 25305

Dear Governor Justice,

It is my honor and privilege to submit the Annual Report for the Division of Corrections & Rehabilitation (DCR), for the fiscal year 2019-2020, in accordance with Chapter § 5-1-20 of the West Virginia Code. We hope that this report will serve to illustrate the Division's progress during the year, as well as provide a valuable reference source for DCR statistics and information.

Sincerely,

Betsy Jividen  
Commissioner

# Table of Contents

Message From the Secretary of Military Affairs and Public Safety	4
Message From the Commissioner of the Div. of Corrections & Rehabilitation	4-5
Accomplishments	6
Table of Organization	7
WVDCR Facility Locations	8
Commissioner's Biography	9
Deputy Commissioner-Field Services	9-10
Deputy Commissioner-Executive Services	10
Chief of Staff	11
Assistant Commissioner-Bureau of Inspector General	12
Assistant Commissioner-Bureau of Prisons and Jails	13-18
Assistant Commissioner-Bureau of Community Corrections	18-21
Assistant Commissioner-Bureau of Juvenile Services	22-25
Assistant Commissioner-Training & Staff Development Bureau	26
Assistant Commissioner-Bureau of Intergovernmental Affairs	27
Fiscal & Budget Statistics	28
Research Statistics-Adult Sentenced Prisoners	29-37
Research Statistics-Jail Statistics: Convicted Felons, and Misdemeanors, Prison Sentenced Offenders held in Regional Jails, Federal Sentenced, Pre-trial Offenders, Pre-trial Felons and Misdemeanors	38-40
Research Statistics-Juveniles	41-44
Employee of the Year	45
Address/Phone Listings	46-47

# Messages: DHS Cabinet Secretary & WVDCR Commissioner



The West Virginia Department of Homeland Security and the Division of Corrections and Rehabilitation (DCR) are honored to present you with the DCR 2020 annual report.

The COVID-19 pandemic has brought new challenges to all West Virginians, especially the important task of safely incarcerating of over 10,000 inmates and providing a safe working environment for over 3,400 employees. I submit to you that DCR, with your leadership has done an outstanding job.

Sound leadership includes financial stability. During your 1st term in office DCR saved West Virginia counties \$12.9 million in fiscal year 2019; \$24.3 million in fiscal year 2020; and projected \$27.4 million in fiscal year 2021.

In 1877 West Virginia opened its first prison in Moundsville. Many things have changed, but DCR has become a leader in safety, innovation, inmate education, and employee training. This past year, the accomplishments achieved by DCR are clearly outstanding.

Jeff S. Sandy, Cabinet Secretary, CFE, CAMS



This past year has certainly been one that none of us will ever forget, as the pandemic repeatedly challenged us to find new solutions, adapt to continually changing circumstances, and deliver enhanced protections for the health, safety and welfare of our staff and populations.

I am so very proud of the way in which the men and women of the DCR mobilized and responded with strength and determination – and often at great risk and sacrifice to themselves and their families - to keep each other and the populations safe.

As an essential public safety agency, the DCR operates twenty-four hours a day, seven days a week. On any given day, there are over 10,000 offenders in our prisons, jails and juvenile facilities. We have duty not only to keep these populations safe, but also to provide opportunities and programming that can help them become productive and contributing community members upon their release from our custody. While the pandemic caused significant changes to our operations – causing us to suspend activities that could not be safely undertaken – there are nonetheless accomplishments to report, during this second year of the consolidated agency.

To this end, during fiscal year 2020, more than 9600 classes were completed in offender programming for substance use disorder, education, vocational training and job readiness, sex offender treatment, cognitive and self-help groups, and parenting skills. In addition, our residents and offenders practiced “giving back” by performing more than 248,000 hours of community service throughout the state.

As part of the proactive agency-wide response to the COVID-19 pandemic, and in cooperation with the National Guard, offenders from Correctional Industries, community corrections, therapeutic residential units, and the facilities at large also stepped up to help address community needs, by producing more than 400,000 masks, not only for the entire DCR offender and resident populations, but which, along with gowns and booties sewn by our inmates, were also donated to hospitals, nursing homes, churches, government offices, students returning to school, and community service agencies across the state.

Our Moral Rehabilitation initiative continues to thrive and includes the Mount Olive Bible College, which held its second graduation in January 2020, and programs such as Malachi Dads, Hannah’s Gift, the Olive Tree, and the Discipleship Program. Our Mentoring Program likewise continues to provide opportunities to practice and experience role modeling, leadership, guidance, and accountability.

# Message: WVDCR Commissioner

Our exciting relationship with the internationally renowned Inside-Out Prison Exchange Program enjoys continued success at Pruntytown through our partnership with Fairmont State University and the Inside-Out organization. The program provides the unique opportunity for “inside” offenders to study together, as peers, with “outside” college and university students in a semester-long college course conducted by a certified Inside-Out college professor behind prison walls. Following the highly successful inauguration of the program, Pruntytown served as one of the national sites for the organization’s training program, providing our staff and inmate population the opportunity to conduct and participate in the training and certification process for future Inside-Out professors from across the country.

The WV DCR is one of eight state correctional agencies selected to participate in the National Governor’s Association Learning Lab on Opioid Use by the Justice Involved Population, and we continue to explore viable strategies for expanding treatment options for our populations. Our second GOALS (Getting Over Addicted Lifestyles Successfully) was opened at the Northern Regional Jail and these units continue to play a key role in our efforts to help break the cycle of addiction, save lives, reduce crime and incarceration costs, and return offenders to their communities where they can become contributing and productive members of society. On this front, additional SUD treatment units became operational at the Donald R. Kuhn and Ronald Mulholland Centers, which along with the unit at the Rubenstein Center, brings our total to three such treatment units within our Bureau of Juvenile Services. A transitional living unit for female residents, modeled after the existing program for males at Rubenstein, is now operating at the Ronald Mulholland Center, to help with life skills necessary for a successful reintegration of our releasing residents back into society.

Educating the public and raising awareness about the important public safety interests that are served when viable reentry programs and opportunities are available for offenders returning to their communities continues to be a key priority for the DCR. Our parole officers and community corrections staff maintain relationships, collaborate with, and attend regular meetings conducted by Reentry Councils across the state. Through such cooperative efforts with our partners in the community, along with the programs provided for our populations, we remain committed to addressing the myriad of challenges to reentry and to realizing improved public safety and the economic community benefits that can occur when we all work together to help returning offenders become law abiding citizens and productive members of the workforce.

Reflecting on a year that has been especially demanding, I especially want to acknowledge and thank Governor Justice and his administration for the support, assistance and encouragement we consistently received. I likewise want to thank our frontline staff, who every year work tirelessly to protect the citizens of West Virginia – and who this year, in particular, is owed a special debt of gratitude for their professionalism, resilience, and incredible spirit. I cannot stress enough that the accomplishments and successes reported in this volume would not be possible without their hard work and dedication, and I would like to thank each member of our workforce for their contributions over the past year and their commitment to the team effort.

Betsy Jividen, Commissioner, WVDCR



# WV DCR Accomplishments

## VINE Implemented in Jails:

The Victim Notification Information Everyday (VINE) system was implemented in all ten regional jails, so that all victims who have requested notification will receive a phone call or text when the offender who victimized them is released from jail. This technological system provides victims complete control and gives them a choice for notification at one central location, with password security.

## Inmate on Inmate Assaults Dropped:

Inmate-on-inmate assaults have dropped 28% from FY2019 to FY2020, resulting in safer facilities.

## Goals Unit:

GOALS Units (Getting Over Addictive Lifestyles): The first GOALS Unit was established at Western Regional Jail in February 2019. In October 2019, the second GOALS Unit opened in Northern Regional Jail. GOALS Units provide Courts with the option of a six-month secure drug treatment program. If the offender completes the program successfully, his or her prison sentence can be reconsidered or reduced. The program affords cost savings to the state, for example; 70 inmates incarcerated for 6-months vs. 70 inmates incarcerated for 2-years is a cost savings of \$2.05 million dollars.

## Juvenile Center Substance Abuse Unit

The DCR's Bureau of Juvenile Services established a new substance abuse unit at Rubenstein Juvenile Center. The program began accepting participants in January 2019. A second unit is being operationalized at the Robert Mulholland Juvenile Center.

## Community Service Hours

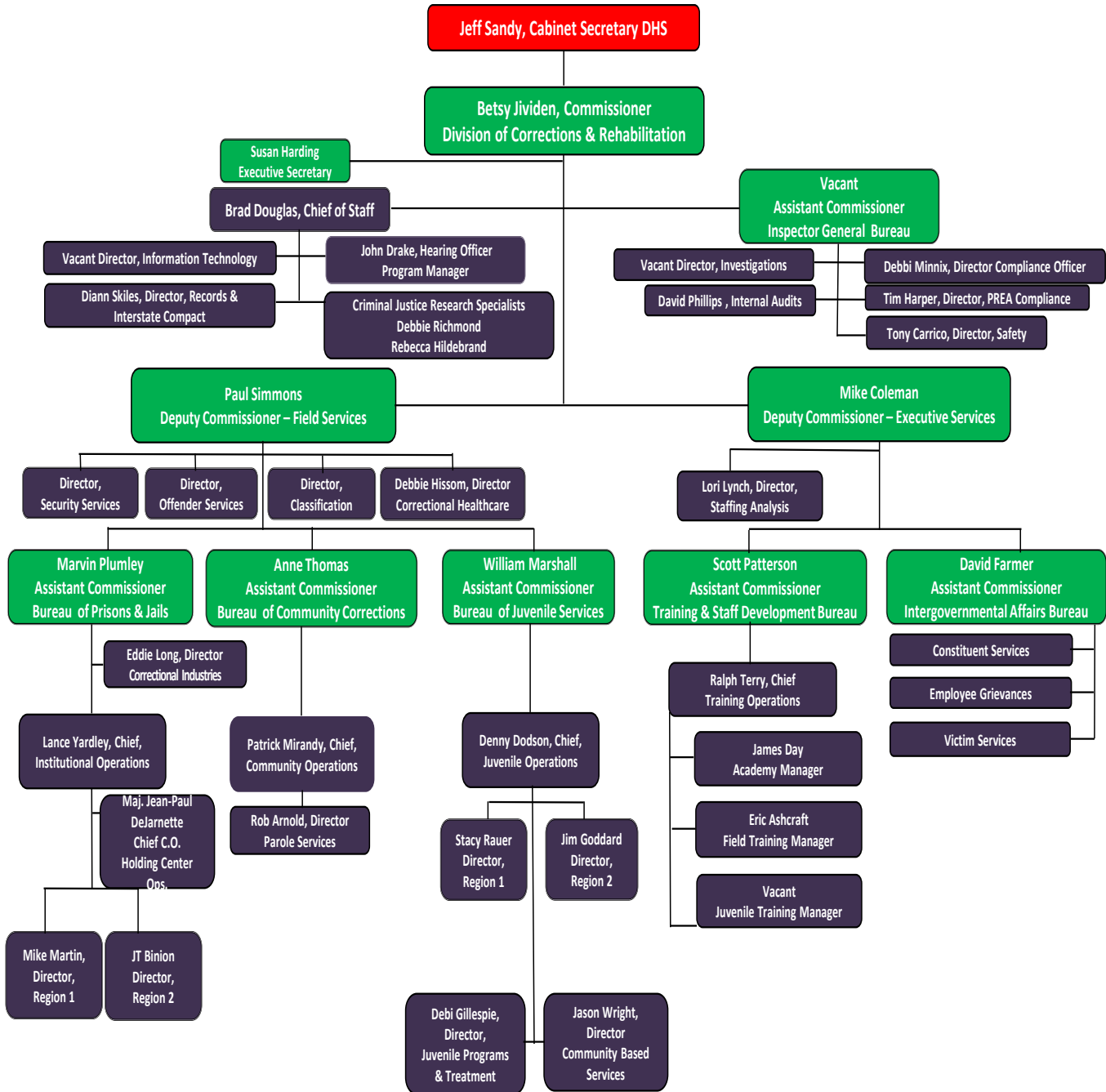
DCR staff and inmates performed 248,389 hours of community service work in FY2020. Please see page 20 of this report for a detailed breakdown of the hours worked.

## Collaboration with National Guard on PPE

During FY20, correctional industries inmate workers produced over 403,000 units of personal protective equipment, (photo on right) which was distributed to the National Guard, correctional facilities and within the community. Please see page 20 of this report for a complete breakdown of the production numbers.

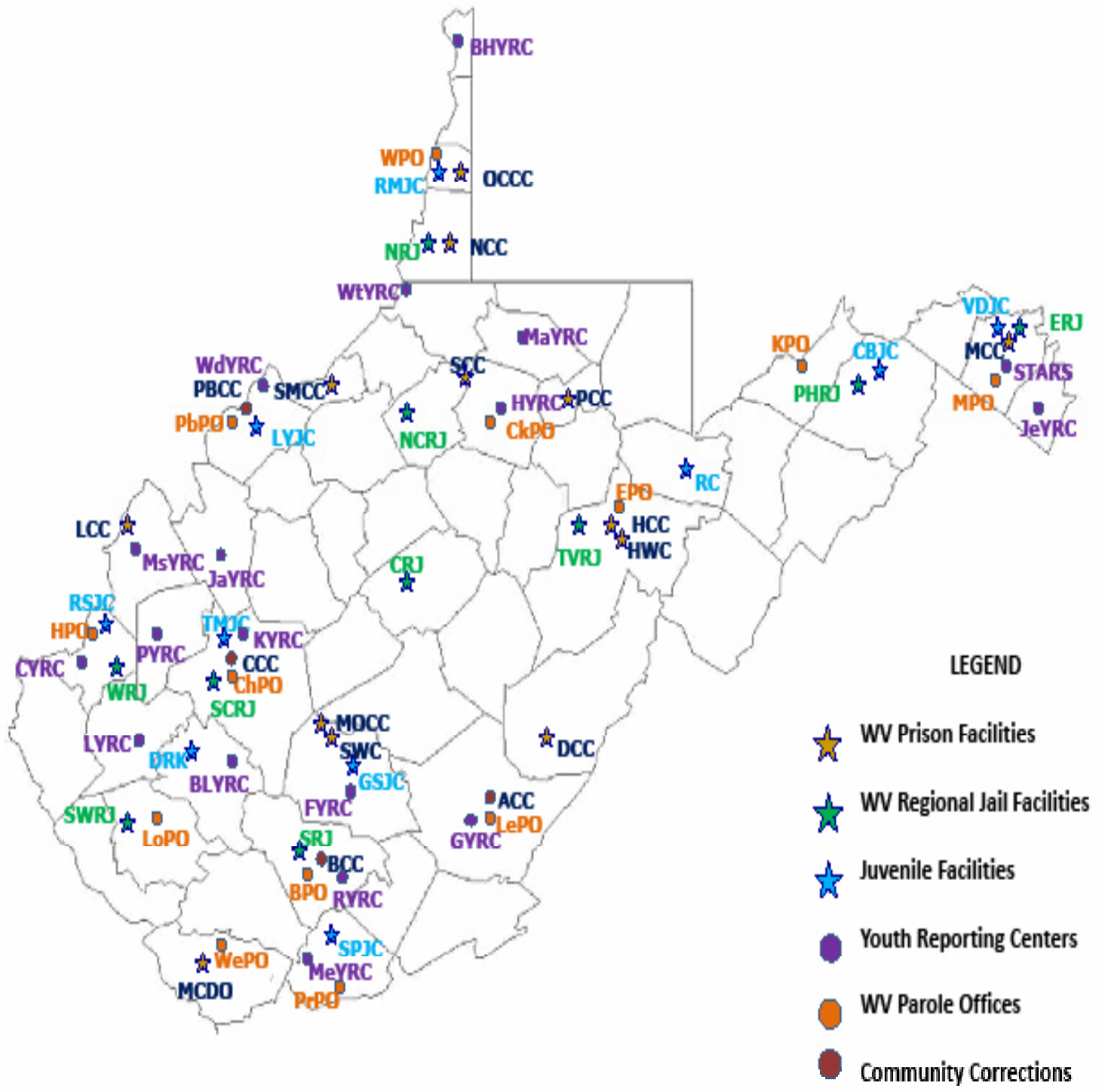


# WVDCR Table Of Organization



As of 6/30/20

# WVDCR Facility Locations





# Leadership Biographies

## Commissioner



Betsy Steinfeld Jividen was appointed as the Commissioner for the West Virginia Division of Corrections effective January of 2018 and ultimately reappointed as the Commissioner of the newly created West Virginia Division of Corrections and Rehabilitation, effective July of 2018. As such, she is responsible for overseeing the state's 35 facilities, including prisons, jails, community corrections centers, juvenile and contract facilities, along with approximately 4100 employees and more than 12,000 offenders.

She previously was the first woman to be appointed as an Assistant United States Attorney in the Northern District of West Virginia, where she spent 37 years, serving in both the Criminal and Civil Divisions of the office, as well as in senior leadership positions, including Civil Chief, Senior Litigation Counsel,

First Assistant United States Attorney, and three terms as the Acting United States Attorney.

In addition, Commissioner Jividen served as the Reentry Coordinator for the Northern District of West Virginia, working with correctional staff, probation officers, inmates and reentrants - both inside facilities and outside in our communities - assisting with projects and programs aimed at making successful reentry a priority and a reality. She has spent many hours both professionally and personally engaged in work that promotes successful reentry, and by extension, the safety and welfare of communities throughout West Virginia. Ms. Jividen was also instrumental in the development of the first federal Drug Court program for the Northern District of West Virginia. She serves as a board member for the Unity Center, HoH Share and the YWCA's residential program for Women in Transition, and as a volunteer at the House of Hagar and for the Project HOPE homeless outreach program.

Commissioner Jividen is a graduate of the University of Wisconsin and the West Virginia University College of Law. She has been recognized by the National Association of Former United States Attorneys for her exceptional service to the Department of Justice and the United States of America. In 2011, she was named as one of West Virginia's outstanding women attorneys, and in 2014, she was selected as a Fellow of the West Virginia Bar Foundation. Commissioner Jividen also spent several years as an Adjunct Professor at the West Virginia University College of Law, teaching Appellate Advocacy and Trial Advocacy.

## Deputy Commissioner: Field Services



Paul Simmons began his career with the Division of Corrections at the West Virginia Penitentiary in July of 1987, as a Correctional Officer I and was promoted to the rank of Sergeant and then Lieutenant. He was part of the transition team for closing the Penitentiary and opening the Mount Olive Correctional Complex. In February of 1998, Paul transferred to Saint Marys Correctional Center and in October of that same year joined the staff at Northern Correctional Center, where he became the Associate Warden of Security in November, 2012. Paul also served as Northern Regional CERT Commander from 2001 to 2012. Paul was appointed as the Assistant Commissioner for the WV Division of Corrections on August 2, 2015 and as the Acting Deputy Commissioner on May 27, 2017. Paul is currently the Deputy Commissioner for Field Services within the WV Division of Corrections and Rehabilitation. He supervises the Assistant Commissioners of Bureau of Prisons and Jails, Bureau of Community Corrections and the Bureau of Juvenile Services.

# Leadership Biographies

The Departments under the supervision of the Deputy Commissioner of Field Services include:

**Security Services for Prisons, Steve Caudill, Director** This department oversees the Special Operations of the WVDCR including the CERT (Corrections Emergency Response Team), CNT (Crisis Negotiators Team) and the K9 operations.

**Program Services for Prisons, Jennifer Ballard, Director** This department is responsible for overseeing all offender programming for WVDCR.

**Inmate Services & Activities for Prisons, Rev. Clarence “CJ” Rider, Director** This department provides oversight and direction for various services and activities provided to offenders, such as the Moral Rehabilitation Initiative Program, Bible College, Yoga, Paws-4-Prison Service Dogs, etc.

**Classification for Prisons, Lesley Hill, Director** This department is responsible for offender classification and offender movement within the WVDCR.

## **Correctional Healthcare--Debbie Hissom, Director**

This department serves as the WVDCR’s liaison with health care vendors. Medical Services participates in assessments, planning, implementation and evaluation of policy and practice throughout the system.

## **Deputy Commissioner: Executive Services**



Mike Coleman was appointed Deputy Commissioner of Executive Services for the West Virginia Division of Corrections and Rehabilitation in July 2018. He previously served as Deputy Commissioner for the WV Division of Corrections since June 1, 2015, where he was appointed by Commissioner Jim Rubenstein. Deputy Commissioner Coleman began his career as a Correctional Officer at the West Virginia Penitentiary in 1984 where he subsequently served as a Sergeant, Protective Custody Unit Commander, Training Sergeant and as a member of the Corrections Emergency Response Team (CERT).

In 1992, he transferred to the Corrections Academy as a Lieutenant where he was responsible for Basic Training operations and in January 1995, Mr. Coleman was promoted to Executive Assistant to the Warden and transferred to the Mount Olive Correctional Complex, where he subsequently served as Associate Warden-Operations, Associate Warden-Security, Deputy Warden, and 14 months as Acting Warden. In April 2005, the Commissioner appointed him Director of Security with responsibility and authority for Special Operations [Corrections Emergency Response Team, Crisis Negotiation Team, and K9 Unit], Correctional Hearing Officers, the Intelligence Unit, and Liaison with McDowell County Corrections. He was appointed Assistant Commissioner in October 2013, overseeing wardens and administrators of all WVDOC institutions.

Deputy Commissioner Coleman is a graduate of numerous training courses conducted by and through the WV Corrections Academy, the National Institute of Corrections, the Federal Law Enforcement Training Center, and others. He is affiliated with the following organizations: member of the American Correctional Association having served on the Adult Prisons Committee, member and former President of the WV Association of Correctional Employees, member of the Southern States Correctional Association, member of the Correctional Peace Officers Foundation, and member of the National Tactical Officers Association (NTOA).

## **Director of Staffing Services, Lori Lynch.**

The Staffing Services section supplies the Commissioner and Deputy Commissioners with the information needed to balance the personnel resources available with the needs of the facilities and work units within the entire Division. With an everchanging inmate and resident population, staffing audits are ongoing to ensure that resources are shifted as the Commissioner deems necessary. Staffing Services assists all Bureaus of the WV Division of Corrections & Rehabilitation, with the utilization of available personnel positions to insure that the resources are in place to fulfill the mission of each Bureau.

# Leadership Biographies

## Chief of Staff



Brad Douglas started with the WVDOC in February 2000 as a Data Analyst. In that function he assisted with the establishment and development of the WVDOC's Office of Research & Planning. In 2002, Brad was promoted to Criminal Justice Specialist 2. Later, in December 2003 after the retirement of the Director of Research & Planning, Brad was promoted to that position and served as such until 2011. In 2011, the Commissioner merged the Information Technology and Research & Planning units into the Office of Research & Technology with Brad in the Director's position. In July 2015, Brad was selected as the Commissioner's Chief of Staff and in that role served as the WVDOC's legislative liaison. In August 2017, Brad accepted a temporary assignment for the Regional Jail Authority as Administrator of the South Central Regional Jail. After the consolidation of the State's three correctional agencies under HB 4338 in July 2018, Brad returned to the Central Office as Chief of Staff for the West Virginia Division of Corrections & Rehabilitation.

Brad was instrumental in the development of the Supreme Court Ordered "Master Plan to Address Prison Overcrowding" in 2002, served as staff on the Governor's Commission on Prison Overcrowding in 2009, and served as a primary WVDOC technical consultant during the development and adoption of the Council of State Government's "Justice Reinvestment in West Virginia" initiative. Brad was also co-project manager of the Inmate Management Information System Steering Committee and served as WVDOC and DMAPS project manager in the more recent Offender Information System project. Brad holds a Bachelor's Degree in Criminal Justice from West Virginia State University, and a Masters in Justice Leadership from Marshall University. In 2001, Brad was the recipient of the WV Association of Correctional Employee's K.D. Knapp Scholarship and the Southern States Correctional Association Scholarship.

### **Information Technology: Vacant, Director**

This office is responsible for planning, development, implementation of the agency's Offender Information System, and liaisons with the WV Office of Technology on hardware, software, network infrastructure support and maintenance. The Office is also involved with the design, maintenance, and implementation of the agency's Security Technology Infrastructure.

### **Records & Interstate Compact: Diann Skiles, Director**

This office is responsible for inmate records and document management for the WVDCR. The office instructs, trains, and oversees records and document management at WVDCR facilities as well as ensuring proper information flow between the WVDCR and other state and federal agencies. The office also manages the Interstate Compact for the Transfer of Adult Offenders on Probation and Parole for the State of West Virginia, this task includes the procedures necessary to transfer parolees and probationers between states and the extradition of current inmates to other jurisdictions for trial or to serve detainees.

### **Correctional Hearings: John Drake, Director**

This office oversees the inmate disciplinary hearing program and the management of hearings for Preliminary Parole Revocations, Revocations from Mandatory Supervision and Conditional Release. Correctional Hearing Officers report directly to this office in order to ensure an impartial disciplinary hearing at the facility level.

### **Planning and Development:**

This portion of the Commissioner's Office manages the production of specialized reports for WVDCR leadership, answers requests for information from the legislature and other parties in state government and the public, liaisons with the Office of Research and Strategic Planning for correctional research purposes, and oversees all grant related activity within the agency.

# Leadership Biographies

## Assistant Commissioner: Inspector General Bureau



Gary Johnson served as a West Virginia Circuit Court Judge for 24 years. He also served as Prosecuting Attorney of Nicholas County for 4 years and was in private practice for 8 years.

He received his BA, MPA and Law Degree from West Virginia University and began practice of law in 1980.

While a Circuit Judge, Mr. Johnson received many awards for his work with children from many organizations including:

- United States Administration on Children, Youth and Families Commissioner's Award
- West Virginia Child Care Association
- West Virginia Children's Justice Task Force
- West Virginia Coalition Against Domestic Violence

He was appointed as Administrative Director of the West Virginia Supreme Court of Appeals in January 2017 and was appointed Assistant Commissioner – Inspector General of the West Virginia Division of Corrections and Rehabilitation on July 1, 2018.

Offices under the Assistant Commissioner--Inspector General Bureau include:

### **Investigations: Steve Berthiaume, Deputy Director**

Investigators are currently embedded in 16 of the 24 adult facilities in the state and 1 of the 10 juvenile centers. In addition, an Investigator is stationed at the Fusion Center and two Investigators at the Stevens Correctional Facility. The Unit conducted 780 investigations at these facilities. The CID Unit acts as the point of contact for all Law Enforcement inmate communication requests that encompass calls, emails, video visits, visitor lists, contact lists, financial accounts and other inmate related information. During FY20, the CID Unit fielded 2,147 such requests for information from local, state and federal law enforcement agencies and conducted 28 investigations for the EEO section of the Department of Homeland Security.

### **Internal Audits-David Phillips, Director**

This office assists the Commissioner in fulfilling the fiduciary oversight responsibilities with respect to the Internal Audit process.

### **Policy & Compliance Office--Debbi Minnix, Director**

This offices primary duty includes policy development.

### **PREA Compliance--Tim Harper, Director**

This office was established to ensure compliance of the standards of the Prison Rape Elimination Act. Due to the Covid-19 pandemic, many audits had to be rescheduled during FY20; the two facilities that did receive accreditation were the Sam Perdue Juvenile Center and Southern Regional Jail.

### **Safety & Loss Prevention Department-- Anthony Carrico, Director**

Goals of this office include the reduction of workers compensation experience modification ratings, improve return to work participation and review inspection principles, safety strategies and overall consistency and uniformity with all facilities.

# Leadership Biographies

## Assistant Commissioner: Bureau of Prisons & Jails



Marvin Plumley graduated from The College of West Virginia in June of 2000 with a Bachelor of Science degree in Criminal Justice. He began his career with the Division of Corrections in January 2001 at Anthony Correctional Center as a Correctional Counselor II. He remained at ACC until June of 2008 and served in multiple roles including Corporal, Lieutenant and Associate Warden of Security and Programs. In June 2008, Marvin was promoted to the Deputy Warden post at Lakin Correctional Center and served in that capacity for two years before transferring to serve as the Deputy Warden at Mount Olive Correctional Complex.

In May 2012, Marvin was appointed as the Warden at Huttonsville Correctional Center and remained there until April 2017 when he accepted a promotion to Senior Director of Compliance and Audits for the DOC. On July 1, 2018 consolidation of the State's three correctional agencies occurred and Commissioner Jividen appointed Marvin to serve as the Assistant Commissioner for the Bureau of Prisons and Jails for the newly formed Division of Corrections and Rehabilitation. Throughout his tenure Marvin has performed various ancillary duties to include EEO Counselor and Investigator, CERT, CNT, Investigations and several other committees/groups. Marvin currently oversees Eddie Long, Director of Correctional Industries, and Lance Yardley, Chief of Institutional Operations, and Region 1 and 2's prisons and jails.

### Facility: Central Regional Jail & Correctional Center



County: Braxton

Population: 381

Superintendent: Harvey Hawkins

Mission: Detention For: Pre-trial Felons/ Misdemeanors, Sentenced Felons/Misdemeanors for the counties of Braxton, Gilmer, Calhoun, Nicholas, Lewis, Roane, Webster, and Clay.

### Facility: Denmark Correctional Center & Jail



County: Pocahontas

Population: 200

Superintendent: Mark Williamson

Mission: Medium Security Prison. Housing Levels 1-3. Must be within 48 mos. of parole or discharge. Correctional Industries Work site. Supervised outside work crews.

# Prison & Jail Facilities

## Facility: Eastern Regional Jail & Correctional Center



County: Berkeley

Population: 568

Superintendent: Scott Paugh

Mission: Detention For: Pre-trial Felons/ Misdemeanors, Sentenced Felons/Misdemeanors for the Counties of Berkeley, Morgan, and Jefferson. Merged with Martinsburg Correctional Center-Male Classification Intake Facility.

## Facility: Lakin Correctional Center & Jail



County: Mason

Population: 518

Superintendent: JD Sallaz

Mission: Maximum Security Prison. Housing Levels 1-5. All Female Facility. Classification Intake Unit. Diagnostic Unit. Behavioral Health Unit. KIDS Unit, Long/Short term segregation units. Correctional Industries Work Site. Supervised Outside Work Crews (Must be within 18 months of Parole or discharge.)

## Facility: Huttonsville Correctional Center & Jail



County: Randolph

Population: 1135

Superintendent: Shelby Searls

Mission: Medium Security Prison. Housing Levels 1-5. Segregation Unit, RSAT Unit, Classification, Intake Unit, Geriatric Unit. Correctional Industries Work site. 46 bed Work Camp on site.

## Facility: McDowell Correctional Center & Jail



County: McDowell

Population: 443

Superintendent: Randall Mutter

Mission: Houses medium security inmates.

# Prison & Jail Facilities

## Facility: Mount Olive Correctional Complex & Jail



County: Fayette

Population: 1010

Superintendent: Donnie Ames

Mission: Maximum Security Prison. Housing Level 3-5. Quilliams Unit. Classification Intake Unit. Mental Health & Medical Unit. Short/Long term segregation units, Correctional Industries Work Site. 48 bed Slayton Work Camp on site.

## Facility: North Central Regional Jail & Correctional Center



County: Doddridge

Population: 821

Superintendent: Joe Wood

Mission: Detention for: Pre-trial Felons/ Misdemeanors, Sentenced Felons/Misdemeanors for the Counties of Wirt, Ritchie, Wood, Pleasants, Doddridge, Harrison, Marion, Monongalia, Tyler and Wetzel. Contractually houses Federal detainees for the USMS.

## Facility: Northern Regional Jail & Correctional Center



County: Marshall

Population: 592

Superintendent: Shawn Straughn

Mission: Maximum Security Prison. Housing Levels 1-5. Special Management Facility. Short term segregation unit, Behavioral Health Unit, Diagnostic Unit. Correctional Industries Work Site. Detention for Pre-trial Felons/ Misdemeanors.

## Facility: Ohio County Correctional Center & Jail



County: Ohio

Population: 67

Superintendent: Shawn Straughn

Mission: Minimum Security. Housing Levels 1-2. Technical Parole Violators. Supervised outside Work Crews. Must be within 24 months of Parole or Discharge. 8 Bed Work Release Unit.

# Prison & Jail Facilities

## Facility: Potomac Highlands Regional Jail & Correctional Center



County: Hampshire  
Population: 315  
Superintendent: Didymus Tate  
Mission: Detention for: Pre-trial Felons/ Misdemeanors, Sentenced Felons/ Misdemeanors for the Counties of Hardy, Hampshire, Mineral, Grant, and Pendleton

## Facility: Pruntytown Correctional Center & Jail



County: Taylor  
Population: 362  
Superintendent: George Trent  
Mission: Minimum Security Prison. Housing Level 1-2 (Select level 3's with placement eval). Must be within 36 months of parole or discharge. Correctional Industries Work Site. Supervised Outside Work Crews.

## Facility: St. Marys Correctional Center & Jail



County: Pleasants  
Population: 632  
Superintendent: Russell Maston  
Mission: Medium Security Prison. Housing levels 1-3 (selective level 4) Must be 60 months from parole or discharge. Sheltered Housing Unit. Correctional Industries Work Site, Supervised Outside Work Crews.

## Facility: Salem Correctional Center & Jail



County: Harrison  
Population: 382  
Superintendent: John Anderson  
Mission: Medium Security Prison. Housing Levels 1-3 Must be within 60 months of parole or discharge. RSAT Unit. Classification Intake facility. Supervised Outside work crews. Must be within 24 months of parole or discharge.



# Prison & Jail Facilities

## Facility: South Central Regional Jail & Correctional Center



County: Kanawha  
Population: 557  
Superintendent: Craig Roberts  
Mission: Detention for: Pre-trial Felons/ Misdemeanors, Sentenced Felons/ Misdemeanors for the counties of Kanawha, and Jackson. Contractually houses Federal detainees for the USMS.

## Facility: Southern Regional Jail & Correctional Center



County: Raleigh  
Population: 629  
Superintendent: Michael Francis  
Mission: Detention for: Pre-trial Felons/ Misdemeanors, Sentenced Felons/ Misdemeanors for the Counties of Raleigh, Fayette, Greenbrier, Wyoming, Summers, Mercer and Monroe. Contractually houses Federal detainees for the USMS.

## Facility: Southwest Regional Jail & Correctional Center



County: Logan  
Population: 465  
Superintendent: Timothy King  
Mission: Detention for: Pre-trial Felons/ Misdemeanors, Sentenced Felons/ Misdemeanors for the Counties of Logan, Boone and McDowell.

## Facility: Tygart Valley Regional Jail & Correctional Center



County: Randolph  
Population: 481  
Superintendent: Bryan Kelly Lanham  
Mission: Detention for: Pre-trial Felons/ Misdemeanors, Sentenced Felons/ Misdemeanors for the Counties of Randolph, Tucker, Barbour, Preston, and Pocahontas.

# Prison & Jail Facilities & Leadership Biographies

Facility: Western Regional Jail & Correctional Center



County: Cabell

Population: 673

Superintendent: Carl Aldridge

Mission: Detention for: Pre-trial Felons/Misdemeanors, Sentenced Felons/ Misdemeanors for the Counties of Cabell, Wayne, Lincoln, Putnam, and Mason.

## Assistant Commissioner: Bureau of Community Corrections



Anne Thomas began her career with the WV Division of Corrections at Mount Olive Correctional Complex in 1999. She has served as an Office Assistant II, Correctional Counselor I, Correctional Counselor II, Correctional Case Manager, Correctional Program Specialist, and Unit Manager at MOCC. She served as Associate Warden of Programs at Lakin Correctional Center from 2007 to 2008. Anne accepted the position of Central Office Director of Classification in 2008 and held this position until being appointed as Warden at Parkersburg Correctional Center on September 1, 2012.

Anne was then appointed as Warden at Lakin Correctional Center on July 23, 2016. On July 22, 2017, she became Acting Chief of Staff at the Division of Corrections Central Office. She was appointed Assistant Commissioner for the Bureau of Community Corrections in July, 2018. In addition to her corrections experience, Ms. Thomas graduated from The College of West Virginia in 1998 with a Bachelor of Science degree in Social and Behavioral Sciences.

Anne currently oversees the Community Corrections Facilities including: Anthony Correctional Center and Jail, Charleston Correctional Center and Jail, Beckley Correctional Center and Jail and Parkersburg Correctional Center and Jail. She also oversees Patrick Mirandy, Chief of Community Operations and Robert Arnold, Director of Parole Services.

# Community Corrections Facilities

## Facility: Anthony Correctional Center & Jail



County: Greenbrier  
Population: N/A  
Superintendent: Rob Neal  
Mission: Male/Female -Court Ordered Young Adult Offender Program.

## Facility: Charleston Correctional Center & Jail



County: Kanawha  
Population: 128  
Superintendent: Jeff Stinnett  
Mission: Minimum Security. Holding Level 1-2. Must be with 24 months of parole or discharge. Males and Females. Work Release.

## Facility: Beckley Correctional Center & Jail



County: Raleigh  
Population: 136  
Superintendent: William Vest  
Mission: Minimum Security. Holding Level 1-2. Must be within 24 months of parole or discharge. Males and Females. Work Release.

## Facility: Parkersburg Correctional Center & Jail



County: Wood  
Population: 337  
Superintendent: Aaron Westfall  
Mission: Minimum Security. Holding Level 1-2. General Population unit must be within 5 years of parole or discharge. Work Release Unit, must be within 24 months of parole or discharge.

# Community Service Hours FY2020

FY2020	Local Church	Community Cleanup	DOH Crews	County Commissions	Other DHS Agencies	Other State Agencies	Schools	Charity Organizations	Cities/Towns	Parks	Adopt-A-Highway	Farm Commission	Humane Society	Crime Victim Awareness	Other	Total
BCC	0	277	9,851	0	67	3,160	0	4,970	80	0	0	0	0	0	112	18,517
CCC	332	190	0	0	715	350	0	24	120	0	48	0	30	0	3,178	4,987
DCC	8,823	0	0	0	0	0	0	0	0	0	21	0	0	0	0	8,844
HWC	0	2,160	6,128	50	0	0	250	0	5,034	0	0	24,497	0	0	4,907	43,026
LCC	10	0	9,242	8	0	6	0	6	2	0	0	0	0	0	660	9,934
MCDO	0	72	0	148	0	0	0	136	52	0	0	0	0	0	0	408
NCC	0	0	0	0	0	0	0	0	0	0	0	0	0	0	0	0
OCCC	0	1,040	9,831	0	6,229	0	0	0	0	0	0	0	0	0	0	17,100
PBCC	2,232	0	0	0	0	0	0	0	6,400	0	5,760	0	0	0	7,680	22,072
PCC	112	1,747	12,924	499	0	223	160	0	413	1,500	0	2,512	259	0	0	20,348
SCC	0	0	0	0	504	991	0	0	0	0	0	0	0	0	598	2,093
SMCC	0	40	5,524	0	0	0	40	180	500	0	0	40	80	10	160	6,574
SWC	1,277	3,305	68,900	0	0	0	178	0	3,530	0	0	0	0	0	2,268	79,458
PAROLE	561	128	0	570	291	2,248	0	7,446	87	0	20	0	62	0	3,616	15,029
<b>TOTAL</b>	<b>13,347</b>	<b>8,959</b>	<b>122,399</b>	<b>1,275</b>	<b>7,806</b>	<b>6,978</b>	<b>628</b>	<b>12,762</b>	<b>16,218</b>	<b>1,500</b>	<b>5,849</b>	<b>27,049</b>	<b>431</b>	<b>10</b>	<b>23,179</b>	<b>248,389</b>

DCR PPE Production								
	Start Date	#Inmates	National Guard Masks	National Guard Gowns	DCR Masks	National Guard Booties	National Guard Bonnets	Donated Community Masks
<b>Denmar</b>	3/26/2020	30	25,608	2,341	38,408	-	-	6,000
<b>Lakin</b>	3/26/2020	15-50	29,891	12,979	46,042	-	-	-
<b>St. Mary's</b>	6/1/2020	20	16,119	5,374	-	2,681	4,840	-
<b>Charleston</b>	5/21/2020	10	70,200	-	-	-	-	-
<b>Parkersburg</b>	5/21/2020	25	18,807	3,117	-	5,912	3,745	-
<b>Beckley</b>	5/21/2020	10	79,046	-	-	-	-	-
<b>Mt. Olive</b>	5/21/2020	25	21,391	11,229	-	-	-	-
<b>Total</b>		<b>120</b>	<b>261,062</b>	<b>35,040</b>	<b>84,450</b>	<b>8,593</b>	<b>8,585</b>	<b>6,000</b>

# Parole Services Statistics: Caseload by County

The map below shows the number of clients supervised by Parole Services, by county at the end of FY 2020. Kanawha County had the highest case load, followed by Cabell, Wood, Mercer and Berkeley Counties. Some reasons for these high numbers are the fact that Kanawha and Cabell Counties have high populations compared to the rest of the state, while Berkeley and Mercer border other states and supervise a large number of interstate compact cases.



Parole Services Clients by type June 30, 2020.

On June 30, 2020, there were 4000 total clients under the supervision of WVDCR Parole Services. Of those 4000 clients it should be noted that 1283 were out of state cases.

Client Type	#	%
West Virginia Parolees	2604	65.10%
Out of State Probationers	1107	27.68%
Out of State Parolees	176	4.40%
Mandatory Supervision	46	1.15%
Conditional Releases	67	1.68%
<b>Total</b>	<b>4000</b>	<b>100.00%</b>

# Leadership Biographies

## Assistant Commissioner: Bureau of Juvenile Services



William Marshall was born in Point Pleasant and graduated from Wahama High School, Marshall University and the W.V. State Police Academy. Marshall began his State Police career in Huntington, where he was awarded the 1995 National Association of Police Organizations (NAPO) West Virginia Police Officer of the Year. He later received Honorable Mention for NAPO National Police Officer of the Year. After a tour of duty in Ripley, Marshall transferred to the Interstate Drug Interdiction Team. He was then selected to work on the W.V. Worker's Compensation Fraud Task Force. He also spent time assigned to the drug task forces in Charleston and Parkersburg.

Such distinguished service led to Marshall's selection to the IRS Criminal Investigation Division's Fraud Task Force, working out of the U.S. Attorney's Office for the Southern District of West Virginia in Charleston. While there, he received commendations for outstanding investigative work. He also received a deputation from the U.S. Marshal's Service. Marshall was promoted to Sgt. in 2006 and named Commander of the Pleasants County Detachment. He then served as Commander of the Wood County Detachment before being selected as the Deputy Director of Traffic Records at State Police Headquarters, working with the Governor's Highway Safety Program.

In 2010, Marshall returned to Wood County and resumed command there until the conclusion of his career in July 2017. He retired with more than 25 years of service with the West Virginia State Police. Following his retirement, Military Affairs and Public Safety Cabinet Secretary, Jeff Sandy, chose Marshall as the Cabinet Department's first Director of Corrections Investigations. It was while performing those duties that Governor Jim Justice appointed Marshall as Director of the former legacy agency, Division of Juvenile Services. Under the newly formed Division of Corrections and Rehabilitation, He now serves as the Assistant Commissioner of the Bureau of Juvenile Services. Asst. Commissioner Marshall oversees Denny Dodson, Chief of Juvenile Operations which in addition to the Juvenile Facilities includes the following Youth Reporting Centers:

- Brooke/Hancock County Youth Reporting Center
- Boone/Logan Youth Reporting Center
- Cabell County Youth Reporting Center
- Fayette County Youth Reporting Center
- Greenbrier Youth Reporting Center
- Harrison County Youth Reporting Center
- Jackson County Youth Reporting Center
- Jefferson County Youth Reporting Center
- Kanawha County Youth Reporting Center
- Lincoln County Youth Reporting Center
- Marion County Youth Reporting Center
- Mason County Youth Reporting Center
- Mercer County Youth Reporting Center
- Pocahontas County Youth Reporting Center
- Putnam County Youth Reporting Center
- Raleigh County Youth Reporting Center
- STARS Youth Reporting Center
- Wood County Youth Reporting Center
- Wetzel-Tyler Youth Reporting Center

# Juvenile Facilities

## Facility: J.M. Chick Buckbee Juvenile Center



County: Hampshire  
Population: 10  
Superintendent: Barbara Spaid  
Mission: Detention/Commitment/Rehabilitation. 8 Bed  
Detention for males up to age 21.

## Facility: Donald R. Kuhn Juvenile Center



County: Boone  
Population: 17  
Superintendent: Brian Semenie  
Mission: Commitment/Rehabilitation facility for males up  
to age 21.

## Facility: Gene Spadaro Juvenile Center



County: Fayette  
Population: 25  
Superintendent: Timothy Meadows  
Mission: Detention Residents only.

## Facility: Lorrie Yeager Juvenile Center



County: Wood  
Population: 29  
Superintendent: Travis White  
Mission: Detention Facility. 24 Bed facility.

# Juvenile Facilities

## Facility: Kenneth "Honey" Rubenstein Juvenile Center



County: Tucker  
Population: 43  
Superintendent: Dan Dilly  
Mission: Commitment/Rehabilitation. 56 bed Rehabilitation facility houses adjudicated low risk males between ages 15-21.

## Facility: Ronald Mulholland Juvenile Center



County: Ohio  
Population: 22  
Superintendent: Linda Scott  
Mission: Operated by Youth Services System. Commitment/Rehabilitation and Detention Facility. 10 Bed Detention facility for males and females up to age 21.

## Facility: Robert L. Shell Juvenile Center



County: Cabell  
Population: 19  
Superintendent: John Marchio  
Mission: Diagnostic, Detention and Commitment/Rehabilitation Facility. Various assessments conducted to determine appropriate individual needs.

## Facility: Sam Perdue Juvenile Center



County: Mercer  
Population: 8  
Superintendent: Gary Patton  
Mission: Commitment/Rehabilitation Facility. 20 Bed Sexual Offender Program for males ages 13-20.



# Juvenile Facilities

## Facility Tiger Morton Juvenile Center



County: Kanawha

Population: 20

Superintendent: Jeremy Dolin

Mission: Commitment/Rehabilitation and Detention Facility.

## Facility Vicki Douglas Juvenile Center



County: Berkeley

Population: 25

Superintendent: Sharon Parsons

Mission: Detention Facility.

# Leadership Biographies

## Assistant Commissioner: Training & Staff Development Bureau



Scott Patterson graduated from West Liberty State College with a Bachelor of Science Degree in Criminal Justice in 1992, where he began his career in Corrections at the West Virginia Corrections Academy as an intern during his senior year. He gained permanent, full-time employment as a Correctional Officer at the West Virginia Penitentiary in 1992; while at the Penitentiary, he also served as a Counselor and then acting Unit Manager of the segregation unit. In 1994, Scott began working for the Academy as an Institutional Training Officer assigned to the newly-constructed Mount Olive Correctional Complex, a position he held until 1995 when he became a Case Manager at Mount Olive. He remained at Mount Olive until 1998, serving as a Unit Manager and then Director of Classification.

In 1998, he was appointed as Warden of the Anthony Correctional Center, where he served until 2007; during his tenure at Anthony, he was placed on temporary duty assignment in McDowell County as the Warden of the Stevens and Welch Correctional Center from October 2006 until May 2007. In July 2007, he left the Division of Corrections and deployed to Iraq as a contractor to the U.S. Department of Justice, helping that country rebuild its corrections system to operate in accordance with international standards for the humane treatment of prisoners and the rule of law. He returned from Iraq in July 2009 and, after a brief hiatus, accepted employment as a Child Protective Services Worker with the WV Department of Health and Human Resources in March 2010, a position he held until March 2011 when he was once again appointed as Warden of the Anthony Correctional Center. In December 2014, he became the WV DOC Senior Director of Compliance and Audits, and held that position until January 2017, when he became the Director of Training. In May 2017, he was assigned as the Acting Assistant Commissioner – Operations, and he held that position until July 2018 when he was appointed the Division of Corrections and Rehabilitation’s Assistant Commissioner for the Bureau of Training and Staff Development.

Leadership staff under this Bureau include, Ralph Terry, Chief Training Operations, James Day, Academy Manager, Eric Ashcraft, Field Training Manager and Matt Smith, Specialized Training Manager.



# Leadership Biographies

## Assistant Commissioner: Intergovernmental Affairs Bureau



Mr. David Farmer began his career with the WVRJA in February 2002 as the Director of Inmate services at the South Central Regional Jail in Charleston, WV. He was appointed as the Administrator of the Southwestern Regional Jail in Logan, WV in December of 2011. He remained in that position until being appointed as Director of the Academy/ Deputy Chief of Operations in August 2014. Mr. Farmer was appointed Executive Director of the Regional Jail and Correctional Facility Authority on June 1, 2015. In July 2018, Mr. Farmer was appointed Assistant Commissioner of Intergovernmental Affairs Bureau where he oversees Constituent and Victims Services, Grant Development and Monitoring and the Justice Reinvestment Act.

The Office of Constituent Services serves as a liaison between the WV Division of Corrections and Rehabilitation and the community by providing information to address concerns regarding conditions of confinement and delivery of timely information. The role of this office is to provide an avenue for the general public to obtain and express concerns on relative issues to the division. During FY20, this office answered over 600 calls/emails regarding issues/concerns of offenders in WVDCR.

The Office of Constituent Services maintains Employee Grievances for the Division. The Administrative Hearing Examiner administers the Level I Grievance process for approximately 4000 employees that fall within the Division of Corrections and Rehabilitation. All Level I Grievance Hearing decisions are submitted to the Commissioner of the WV Division of Corrections and Rehabilitation, for review and final sanction. If the Grievant is not satisfied with the Hearing Examiner's response at Level I, the Grievant may appeal to the State Employees Grievance Board.

During the fiscal year 2019-2020, there were approximately seventy-eight Level I grievances filed; eleven terminations/suspensions, twelve written reprimands, twenty-seven pay related issues, seven scheduling disputes, six job position/classification related issues, nine related to leave/time, four in relation to hostile work environment/EEO and two regarding nepotism. Level I outcomes included two granted, two granted in-part, fifty-one denied, thirteen withdrew, one dismissed and nine waived.

The Victim Services Program offers direct services to victims of crime in all 55 counties in West Virginia for the West Virginia Division of Corrections and Rehabilitation. Carla Shirey, is the VSS (Victim Services Specialist) and provides services to victims by registering them in the OIS data base and registering them with the WV Victim Notification Everyday (VINE) notification program. The VINE program offers notification of the Offender's movement throughout the incarceration process of the WVDCR. The VINE Notification System is now offered in all WVDCR Facilities including 15 State Prisons and 10 Regional Jails. The VSS shares the OIS Inmate files with the Parole Board to provide Parole Notification. The VSS provides services by offering information regarding corrections and the parole process by communicating with victims daily by phone calls and direct contact by attending parole hearings. An important role provided to victims by the VSS, is attending parole hearings with victims. By supporting victims at parole hearings, the VSS is ensuring the victim's rights in the role of involvement of Community Justice within the WVDCR.

During FY20, Ms. Shirey has provided direct services to 449 victims of crime. Part of the services included attending 109 parole hearings with victims of all types of crime. While targeting the underserved population of victims of homicide in West Virginia, Carla has assisted 135 families of deceased victims of homicide. In addition, the VSS has Victim Services Representatives (VSR's) staff on-site at WVDCR facilities that are also trained to offer direct services.

# Fiscal & Budget Statistics

Prisons General Revenue by Category FY20	Expenditures	% Of Budget Expended
Personnel Services (Payroll)	\$76,218,312	31.74%
Annual Increment	\$912,224	0.38%
Inmate Payroll	\$1,854,438	0.77%
Employee Benefits	\$27,108,085	11.29%
Utilities	\$6,547,841	2.73%
Food	\$7,323,290	3.05%
Other Operating Expenses	\$14,694,857	6.12%
Repairs & Alterations	\$1,980,538	0.82%
Equipment	\$1,546,825	0.64%
Inmate Medical	\$25,185,826	10.49%
Payments to Regional/County Jails & Federal Bureau of Prisons	\$50,442,443	21.01%
Board of Risk Insurance Premium	\$4,131,241	1.72%
Less Reimbursements	-\$1,057,753	-0.44%
<b>Total Expenditures</b>	<b>\$216,888,166</b>	<b>90.33%</b>

**Average Cost Per Inmate for FY 2020: \$32,444 Average Cost Per Day= \$88.89**

*(Includes all expenditures \$216,888,166 / Average Population 6685 and includes food/medical costs)*

Jails General Revenue by Category FY20	Appropriated	Spec Rev	Total	% of Budget Expended
Personnel Services (Payroll)	\$ 498,360	\$ 42,518,530	\$ 43,016,890	36.21%
Annual Increment	\$ 9,180	\$ 340,764	\$ 349,944	0.29%
Employee Benefits	\$ 176,503	\$ 13,912,079	\$ 14,088,581	11.86%
Utilities	\$ 7,098	\$ 6,517,972	\$ 6,525,070	5.49%
Food	\$ 415	\$ 6,054,980	\$ 6,055,396	5.10%
Other Operating Expenses	\$ 158,225	\$ 7,825,456	\$ 7,983,681	6.72%
Repairs & Alterations	\$ -	\$ 2,113,024	\$ 2,113,024	1.78%
Equipment	\$ 966	\$ 4,791,622	\$ 4,792,588	4.03%
Inmate Medical	\$ -	\$ 19,698,846	\$ 19,698,846	16.58%
Bond Payments	\$ 8,767,585	\$ 3,800,000	\$ 12,567,585	10.58%
Board of Risk Insurance Premium	\$ 13,562	\$ 1,794,698	\$ 1,808,260	1.52%
Less Reimbursements	\$ (208,215)	\$ 0	\$ (208,215)	-0.18%
<b>Total Expenditures</b>	<b>\$ 9,423,678</b>	<b>\$ 109,367,971</b>	<b>\$ 118,791,650</b>	<b>100.00%</b>

Juveniles General Revenue by Category FY20	Expenditures	% Of Budget Expended
Personnel Services (Payroll)	\$ 20,940,073	44.72%
Annual Increment	\$ 235,485	0.50%
Employee Benefits	\$ 7,700,196	16.44%
Utilities	\$ 771,578	1.65%
Food	\$ 292,360	0.62%
Other Operating Expenses	\$ 5,330,916	11.38%
Repairs & Alterations	\$ 364,775	0.78%
Equipment	\$ 183,971	0.39%
Inmate Medical	\$ 3,654,170	7.80%
Board of Risk Insurance Premium	\$ 208,394	0.45%
Less Reimbursements	\$ (148,655)	-0.32%
<b>Total Expenditures</b>	<b>\$ 39,533,264</b>	<b>84%</b>

# Adult Prison Statistics

County Spotlights : # of prison inmates incarcerated by county on or around June 30 of the last 11 years

County	2010	2011	2012	2013	2014	2015	2016	2017	2018	2019	2020
Barbour	52	55	49	43	37	41	56	77	69	72	56
Berkeley	288	305	288	328	301	308	309	296	323	344	307
Boone	98	89	110	120	120	110	95	93	91	91	60
Braxton	79	80	86	71	68	65	67	55	78	78	51
Brooke	59	77	73	62	69	63	75	79	72	69	67
Cabell	410	424	445	494	462	499	492	503	492	510	375
Calhoun	13	19	17	18	14	23	22	18	24	31	36
Clay	24	33	40	33	35	47	41	38	61	45	37
Doddridge	21	24	27	24	22	22	25	19	21	23	19
Fayette	212	235	241	251	260	244	239	248	249	246	208
Gilmer	19	20	31	32	28	36	32	27	28	34	30
Grant	58	58	74	65	50	43	41	45	43	49	44
Greenbrier	126	126	136	146	119	150	144	121	118	116	94
Hampshire	64	64	65	73	78	87	90	96	102	105	86
Hancock	108	108	96	99	99	96	115	120	114	95	84
Hardy	35	35	38	42	29	41	48	43	58	43	31
Harrison	238	250	272	273	297	278	324	322	327	355	327
Jackson	97	108	135	141	123	121	107	101	95	98	89
Jefferson	99	80	68	84	86	90	99	102	121	124	113
Kanawha	755	835	837	820	743	742	761	754	743	764	638
Lewis	51	53	54	48	64	70	80	74	68	80	66
Lincoln	49	42	52	43	53	70	85	98	92	93	91
Logan	169	205	171	175	156	162	148	169	128	130	120
Marion	167	197	203	207	192	179	190	195	185	195	209
Marshall	78	94	103	88	79	87	87	95	92	105	87
Mason	98	106	105	104	70	78	95	84	77	65	58
McDowell	111	108	115	102	102	99	108	97	101	96	86
Mercer	434	445	444	454	460	446	418	377	389	342	283
Mineral	49	69	77	73	63	62	57	58	57	55	40
Mingo	186	171	157	173	123	136	123	111	124	111	92
Monongalia	179	197	217	220	221	233	216	229	238	261	237
Monroe	31	35	52	56	63	56	60	55	49	48	57
Morgan	73	70	76	89	89	83	72	90	85	86	70
Nicholas	144	131	115	120	120	120	100	93	96	97	95
Ohio	250	277	279	271	244	220	203	219	205	194	166
Pendleton	38	41	38	32	32	28	24	34	30	34	26
Pleasants	8	5	13	6	13	12	14	11	14	24	19
Pocahontas	13	12	17	12	14	15	16	26	17	22	18
Preston	80	93	95	85	74	85	85	83	110	94	103
Putnam	128	124	140	135	132	138	147	124	137	135	101
Raleigh	278	276	278	294	277	271	311	322	327	302	285
Randolph	73	70	59	55	79	80	74	89	138	152	118
Ritchie	25	31	26	25	23	27	26	29	30	52	49
Roane	47	60	55	61	64	62	70	73	94	99	87
Summers	48	47	47	76	65	62	52	58	57	68	58
Taylor	83	96	82	81	58	76	80	89	94	84	56
Tucker	10	7	4	4	1	3	5	5	9	9	6
Tyler	22	33	40	32	28	28	39	32	32	22	13
Upshur	91	100	101	86	108	92	88	106	100	81	85
Wayne	158	155	171	144	143	173	161	141	183	204	172
Webster	51	62	74	87	97	116	112	99	85	84	62
Wetzel	54	45	56	75	65	58	56	62	61	57	49
Wirt	24	20	23	24	22	16	23	20	23	25	22
Wood	280	303	322	306	299	316	327	348	368	406	365
Wyoming	48	52	47	46	49	49	67	62	60	58	50

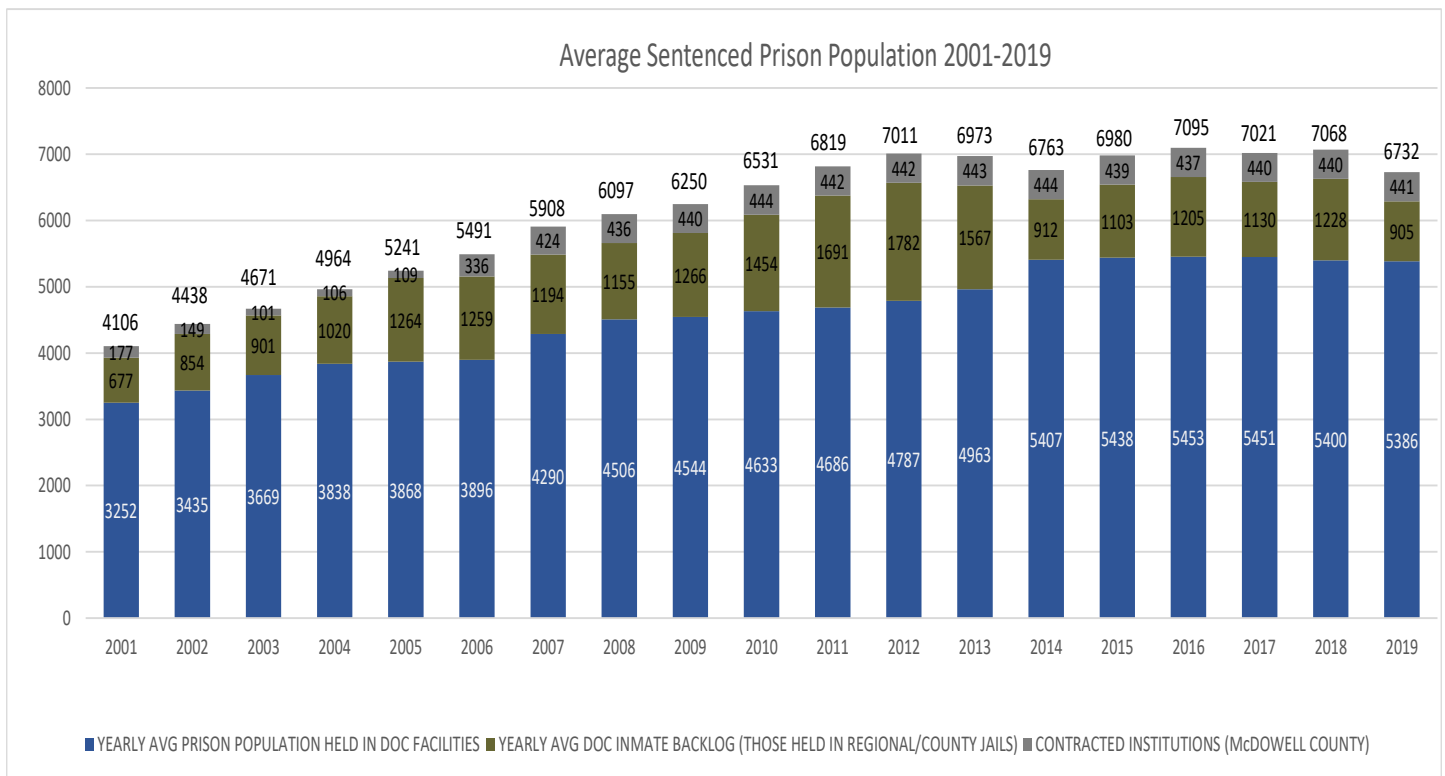
# Adult Prison Statistics

The table on the right and the chart below shows the total average sentenced inmate population in WVDCR institutions and the total average sentenced inmate population that have been committed to the WVDCR, but were awaiting prison space in county/regional jails during the past 19 years. During that period, the total inmate population for WVDCR has increased by a total of 2626 inmates.

Inmates that were committed to the WVDCR but were waiting in county/regional jails for bed space in WVDCR facilities increased by a total of 228 inmates since 2001.

The WVDCR also houses inmates in the McDowell County Correctional Center on a per diem contract basis; this population is represented in the “Contracted” column. This segment has increased by 264 inmates in the last 19 years.

Calendar Year	Prisons	Jails	Contracted	Total
2001	3252	677	177	4106
2002	3435	854	149	4438
2003	3669	901	101	4671
2004	3838	1020	106	4964
2005	3868	1264	109	5241
2006	3896	1259	336	5491
2007	4290	1194	424	5908
2008	4506	1155	436	6097
2009	4544	1266	440	6250
2010	4633	1454	444	6531
2011	4686	1691	442	6819
2012	4787	1782	442	7011
2013	4963	1567	443	6973
2014	5407	912	444	6763
2015	5438	1103	439	6980
2016	5453	1205	437	7095
2017	5451	1130	440	7021
2018	5400	1228	440	7068
2019	5386	905	441	6732



# Adult Prison Statistics

## Commitments to WVDCR \* Does not include those sentenced to prison but housed temporarily in jail locations.

Month	Regular	Diag	PVT	PVF	PRP	Home Conf. Rev.	Home Conf. Par. Rev.	Prob. Viol. Felony	Prob. Viol. Tech.	ACC	Esc. Returned	Returned As Fit	Com. Cor. Rev.	Sex Off. Rev.	Total
Jul-19	164	4	66	1	31	18	0	0	49	13	1	0	0	8	355
Aug-19	160	6	69	4	26	10	0	0	58	10	1	0	2	2	348
Sep-19	175	4	64	0	55	14	1	2	38	9	0	1	1	2	366
Oct-19	189	7	55	6	33	20	1	2	44	14	0	0	1	6	378
Nov-19	155	4	38	0	19	16	0	1	51	7	1	0	0	6	298
Dec-19	139	3	68	0	41	11	0	0	35	13	0	0	0	5	315
Jan-20	188	3	67	0	34	6	0	0	48	14	0	0	0	2	362
Feb-20	163	2	57	5	34	5	2	1	75	10	4	0	0	3	361
Mar-20	94	4	50	2	26	7	0	0	13	8	1	0	0	1	206
Apr-20	9	0	55	1	41	1	0	0	4	2	0	0	0	0	113
May-20	51	0	40	2	17	7	0	0	28	1	0	0	0	0	146
Jun-20	88	0	51	0	28	13	0	0	35	9	0	0	1	0	225
<b>Totals</b>	<b>1575</b>	<b>37</b>	<b>680</b>	<b>21</b>	<b>385</b>	<b>128</b>	<b>4</b>	<b>6</b>	<b>478</b>	<b>110</b>	<b>8</b>	<b>1</b>	<b>5</b>	<b>35</b>	<b>3473</b>

### Abbreviation Guide:

- Regular:** Regular Commitment to a WVDCR facility of an appropriate security level.
- Diagnostic:** Commitment for evaluation purposes in order to assist Judges in making sentencing decisions.
- PVT:** Commitment returning a parolee to prison for a technical revocation.
- PVF:** Commitment returning a parolee to prison for a new felony.
- PRP:** Commitment returning a parolee to prison for a revocation due to pending felony/misdemeanor
- Home Conf. Rev.:** Commitment for revoked home confinement, supervised by local jurisdiction.
- Home Conf. Par Rev.:** Commitment for revoked home confinement - parole.
- ACC:** Commitment to the young adult facility, Anthony Correctional Center.
- Esc. Returned:** Escaped from WVDCR facility and returned to complete sentence.
- Returned as Fit:** Returned by Court to Anthony Correctional Center to complete program.

## Releases from WVDCR\* Does not include those sentenced to prison but housed temporarily in jail locations.

Month	# of Inmates Paroled	Medical Respite	Conditional Pardon	Full Pardon	Diagnostic Releases*	Escape	Death	# of Inmates Discharged	Court Ordered Release**	Mand. Sup. Rel.	Total
Jul-19	253	0	0	0	2	0	2	69	24	11	361
Aug-19	180	0	0	0	1	2	1	35	30	5	254
Sep-19	202	0	0	0	3	0	2	54	23	7	291
Oct-19	244	0	0	0	0	1	3	75	15	5	343
Nov-19	196	0	0	0	2	1	1	56	25	6	287
Dec-19	198	0	0	0	1	0	1	61	26	5	292
Jan-20	232	0	0	0	0	2	2	58	13	3	310
Feb-20	187	0	0	0	2	1	6	47	12	4	259
Mar-20	219	0	0	0	0	0	4	50	25	5	303
Apr-20	262	0	0	0	2	1	2	68	16	5	356
May-20	224	0	0	0	0	0	9	47	13	5	298
Jun-20	254	0	0	0	0	0	3	37	15	4	313
<b>Totals</b>	<b>2651</b>	<b>0</b>	<b>0</b>	<b>0</b>	<b>13</b>	<b>8</b>	<b>36</b>	<b>657</b>	<b>237</b>	<b>65</b>	<b>3667</b>

\***Diagnostic Releases:** Diagnostic commitments to the WVDCR are typically for a temporary period of 60 days after which the inmate is released and reconsidered by the Court.

\*\***COR:** Court Ordered Release; Although an inmate can be released from prison by court order for various reasons, the data in this column typically indicates releases from Anthony Correctional Center, a special young adult correctional institution.

# Adult Prison Statistics

The data presented in this report was gathered from the WVDCR Offender Information System (OIS) on June 30, 2020. This report includes data on those inmates in the legal custody of the WVDCR as of June 30, 2020. Unless otherwise noted, each inmate is represented only once in each table by their most serious crime.

	FY2015	FY 2016	FY 2017	FY 2018	FY2019	FY2020
<b>ABDUCTION</b>						
Concealment Of Minor Child From Custodian In Another State	0	0	1	2	0	0
Concealment Or Removal Of Minor Child To Deprive Custodian Of Custody	2	3	1	0	2	2
Threats To Kidnap Or Demand Ransom	3	1	2	3	1	2
<b>ABDUCTION TOTAL</b>	<b>5</b>	<b>4</b>	<b>4</b>	<b>5</b>	<b>3</b>	<b>4</b>
<b>ARSON</b>						
Attempt To Commit Arson; Fourth Degree Arson	0	6	2	2	4	2
Burning, Or Attempting to Burn, Insured Property	0	0	1	0	0	0
First Degree Arson	30	30	26	21	17	12
Second Degree Arson	11	10	10	10	14	5
Starting Fire on Lands of Another	2	1	0	0	0	0
Third Degree Arson	6	5	5	5	4	2
<b>ARSON TOTAL</b>	<b>49</b>	<b>52</b>	<b>44</b>	<b>38</b>	<b>39</b>	<b>21</b>
<b>ASSAULT</b>						
Assault During Commission/Attempt To Commit A Felony	18	16	16	15	14	14
Battery On A Governmental Representative-2nd Offense	0	2	2	3	5	2
Battery Police Officers, Etc 2nd Offense	5	1	1	1	2	0
Domestic Violence - Third Or Subsequent Offense	58	51	58	56	66	51
Malicious Assault	108	95	85	109	91	86
Malicious Assault; Police Officers, Etc.	3	2	2	2	2	5
Stalking; 2nd or Subsequent Offense	0	1	0	3	1	2
Strangulation	0	0	6	20	32	38
Unlawful Assault	104	99	95	99	94	85
Violation of Protective Order	2	0	0	0	2	2
Wanton Endangerment Involving A Firearm	49	47	65	60	67	52
<b>ASSAULT TOTAL</b>	<b>347</b>	<b>314</b>	<b>330</b>	<b>368</b>	<b>376</b>	<b>337</b>
<b>BRIBERY</b>						
Bribery; false claims; conspiracy; criminal penalties	0	0	0	1	1	0
Bribery Or Attempted Bribery	0	1	1	2	1	3
<b>BRIBERY TOTAL</b>	<b>0</b>	<b>1</b>	<b>1</b>	<b>3</b>	<b>2</b>	<b>3</b>
<b>BURGLARY/BREAKING AND ENTERING</b>						
Breaking And Entering	285	274	304	296	277	233
Breaking And Entering to Remove Equipment	1	2	0	0	2	1
Burglary By B&E (1-15 Yrs)	357	388	419	440	406	316
Burglary; Daytime Without Breaking	194	212	203	194	195	123
<b>BURGLARY/BREAKING AND ENTERING TOTAL</b>	<b>837</b>	<b>876</b>	<b>926</b>	<b>930</b>	<b>880</b>	<b>673</b>
<b>CHILD ABUSE/NEGLECT</b>						
Abuse Or Neglect Of Incapacitated Adult	2	2	3	5	8	8
Child Abuse By Parent Resulting In Injury	27	28	25	33	19	13
Child Abuse By Parent W/ Serious Bodily Injury	14	15	14	10	21	14
Child Abuse W/ Risk Of Serious Bodily Injury Or Death	13	21	16	14	14	15
Child Neglect By Parent Resulting In Death	25	24	25	18	15	10
Exposure Of Children To Methamphetamine	18	14	9	2	6	4
Gross Neglect Of Child Creating Risk Of Injury Or Death (1-5 Yrs)	53	46	55	40	53	45
Neglect By Parent, Guardian Or Custodian Causing Bodily Injury (1-3 Yrs)	8	11	8	9	7	12
Neglect By Parent, Guardian Or Custodian Causing Serious Bodily Injury (1-10 Yrs)	14	14	15	10	10	5
Parent Or Custodian Permits Death Of Child By Abuse	2	2	2	2	1	1
Parent, Guardian, Custodian or Other Person in Position of Trust Allowing Sexual Abuse of Child over 16 By Another	2	3	0	0	0	0
<b>CHILD ABUSE/NEGLECT TOTAL</b>	<b>178</b>	<b>180</b>	<b>172</b>	<b>143</b>	<b>154</b>	<b>127</b>



# Adult Prison Statistics

	FY2015	FY 2016	FY 2017	FY 2018	FY 2019	FY2020
<b>COUNTERFEITING/FORGERY</b>						
Counterfeiting	7	9	7	6	4	8
Forge/Counterfeit Documents/Plates	0	2	1	0	1	2
Forgery Of Public Record, Certificate	4	5	6	6	8	14
Forgery/Counterfeiting/Etc Of Lottery Tickets	0	0	4	1	1	0
Forging Or Uttering Other Writing; Penalty	192	173	172	171	150	124
Possession of Counterfeit With Intent to Utter-Ten or More Notes	0	2	1	0	1	0
<b>COUNTERFEITING/FORGERY TOTAL</b>	<b>203</b>	<b>191</b>	<b>191</b>	<b>184</b>	<b>165</b>	<b>148</b>
<b>DESTRUCTION/DAMAGE/VANDALISM OF PROPERTY</b>						
Damage Or Destruction Of Railroad Or Public Utility Company Property (1-3 Yrs)	0	0	1	0	1	1
Destruction/Concealing Will/Codicil; Embezzlement By Fiduciary	0	0	0	0	0	1
Destruction/Damage/Vandalism, Removal, Injury To or Destruction of Property	0	0	2	0	0	0
Destruction of Building by Rioters	0	0	0	0	0	4
Removal, Injury To Or Destruction Of Property	25	21	14	28	18	13
<b>DESTRUCTION/DAMAGE/VANDALISM OF PROPERTY TOTAL</b>	<b>25</b>	<b>21</b>	<b>17</b>	<b>28</b>	<b>19</b>	<b>19</b>
<b>DRUG/NARCOTIC OFFENSES</b>						
2nd Offense; Poss. Of Ephedrine, Pseudoephedrine	1	1	0	0	0	0
Bringing a Controlled Substance into a Jail	0	0	1	0	0	0
Conspiracy to Manuf., Del., Poss. w/Int. to Del Cont'd Subs. (determinate term 2 up to 10 years)	0	0	0	0	33	56
Conspiracy to Manuf., Del., Poss. w/Int. to Del Cont'd Subs. (determinate term 2 up to 15 years)	0	0	0	0	0	1
Conspiracy to Manuf., Del., Poss. w/Int. to Del Cont'd Subs. (determinate term 2 up to 20 years)	0	0	0	1	0	2
Conspiracy to Manuf., Del., Poss. w/Int. to Del Cont'd Subs. (determinate term 2 up to 30 years)	0	0	0	0	0	3
Distribution By Persons Age 18 Or Older W/1 1000 Feet Of School Sch I,II Narcotic	6	4	4	5	5	5
Distribution By Persons Age 18 Or Older W/1 1000 Feet Of School Sch I,II, III, Non-Narcotic	1	1	0	0	1	0
Distribution to Persons Under the Age of 18 Sch I, II Narcotic	1	0	0	1	0	0
Drug Delivery resulting in death; failure to render aid	0	0	0	4	9	11
Drug Offense 2nd Or Subsequent Offense	5	5	5	4	2	2
Manufacture/Deliver Counterfeit I,II Controlled Narcotic Substance	8	12	10	6	2	5
Manufacture/Deliver Counterfeit I,II,III Controlled Substance	8	49	169	180	75	53
Manufacture/Deliver Counterfeit Iv Controlled Substance	3	5	3	3	8	2
Manufacture/Deliver Sch I,II Controlled Narcotic Substance	350	305	276	234	262	195
Manufacture/Deliver Sch I,II,III Controlled Substance	190	228	178	340	385	260
Manufacture/Deliver Sch Iv Controlled Substance	13	21	17	19	19	21
Obtain Controlled Substance By Fraud, Etc	14	12	7	6	2	2
Operate or Attempt to Operate a Clandestine Drug Lab	0	0	1	0	0	0
Operating Or Attempting To Operate Clandestine Drug Laboratories; Offenses; Penalties	162	143	107	135	72	52
Possession With Intent To Deliver Imitation Controlled Substance	0	0	0	0	0	1
Possession of Controlled Substance with Intent to Deliver	0	0	0	1	3	1
Possession Of Precursor To Manufacture Methamphetamine	24	20	18	24	12	5
Transportation Of Sch I,II Narcotic Controlled Substance	3	6	4	2	1	1
Transportation Of Sch I,II,III Controlled Substance	1	2	2	1	0	0
Unlawful manufacture, delivery, transport into state, or possession of fentanyl	0	0	0	0	2	4
<b>DRUG/NARCOTIC OFFENSES TOTAL</b>	<b>790</b>	<b>814</b>	<b>802</b>	<b>966</b>	<b>893</b>	<b>682</b>
<b>DUI</b>						
Driving While License Suspended Or Revoked; Driving While License Revoked For Driving Under The Influence	45	54	45	50	57	53
DUI Causing Serious Bodily Injury	0	0	0	6	18	16
DUI - Third Offense	59	37	45	53	59	34
DUI 2nd Offense	0	0	1	0	0	0
Fleeing From Officer; Vehicle - Dui - Felony	23	25	23	27	15	17
<b>DUI TOTAL</b>	<b>127</b>	<b>116</b>	<b>114</b>	<b>136</b>	<b>149</b>	<b>120</b>
<b>EMBEZZLEMENT</b>						
Embezzlement - Banking Institution	8	8	11	6	10	6
Embezzlement By Carrier Or Other Person	0	4	6	8	11	8
<b>EMBEZZLEMENT TOTAL</b>	<b>8</b>	<b>12</b>	<b>17</b>	<b>14</b>	<b>21</b>	<b>14</b>
<b>EXTORTION/BLACKMAIL</b>						
Extortion	1	0	0	1	0	0
<b>EXTORTION/BLACKMAIL TOTAL</b>	<b>1</b>	<b>0</b>	<b>0</b>	<b>1</b>	<b>0</b>	<b>0</b>
<b>FRAUD</b>						
Access Computer Fraudulently Obtain Money, Etc.	4	2	4	2	2	1
Attempt Fraudulent Use, Traffic Credit Card To Purchase Goods	3	3	2	0	1	0
False Statement/False Representation	0	1	0	0	0	1
Falsifying Accounts	0	1	1	0	1	1
Financial Exploitation of an Elderly Person (2-20 Yrs)	0	0	0	0	2	5
Forgery Credit Card	11	15	10	9	6	7
Fraud With Access Device - Felony	59	65	63	67	77	75
Fraudulent Claims to Insurance Companies	2	5	0	3	2	2
Fraudulent Schemes	18	20	24	25	24	15
Grand Larceny By False Pretenses	0	0	0	0	2	1
Misappropriation Of Elderly Person'S Funds (2-10Yrs)	0	4	2	0	4	2
Misappropriation Of Elderly Person'S Funds (5-15Yrs)	0	0	1	0	0	0
Obtaining Money, Property Services By False Pretenses	14	15	9	15	15	6
Taking Identity Of Another Person; Penalty	4	3	3	6	6	4
Unlawful Expenditure or Dissipation of Funds of An Incapacitated Adult By A Caregiver	3	0	2	2	3	1
Welfare Fraud - Felony	3	2	3	1	0	1
<b>FRAUD TOTAL</b>	<b>121</b>	<b>136</b>	<b>124</b>	<b>130</b>	<b>145</b>	<b>122</b>

# Adult Prison Statistics

	FY2015	FY 2016	FY 2017	FY 2018	FY 2019	FY2020
<b>HOMICIDE</b>						
2nd Offense Of Murder	0	0	1	1	1	2
Attempt To Commit A Felony Punishable W/Life	2	4	3	3	0	2
Attempt To Kill Or Injure By Poison	1	1	1	0	1	1
Convicted Twice Before (Habitual)	16	15	14	10	10	7
Death Of A Child By Parent, Guardian By Child Abuse	22	20	21	19	20	19
Dui With Death - Reckless Disregard - Felony	20	26	24	28	24	20
First Degree Murder	597	653	655	630	648	632
Involuntary Manslaughter; Penalty	0	0	1	1	1	1
Murder Of A Child By A Parent, Guardian Or Custodian Or Other Person By Refusal Or Failure To Supply	3	4	4	6	7	8
Second Degree Murder	187	181	179	183	180	179
Voluntary Manslaughter	63	65	66	61	62	56
<b>HOMICIDE TOTAL</b>	<b>911</b>	<b>969</b>	<b>969</b>	<b>942</b>	<b>954</b>	<b>927</b>
<b>KIDNAPPING/ABDUCTION</b>						
Abduction Of Person, Kidnapping/Concealing Child For Other Purposes	36	36	35	30	25	24
Abduction Of Person, Kidnapping/Concealing Child W/Purpose Of Defiling	25	27	26	12	22	21
Abduction Of Person, Kidnapping/Concealing Child	0	1	5	6	13	13
Penalty For Kidnapping - Life W/Mercy	15	16	18	17	18	14
Penalty For Kidnapping - Life W/O Mercy	2	2	2	3	3	3
Penalty For Kidnapping Where Victim Returned Unharmed After Ransom	5	6	4	5	3	2
Penalty For Kidnapping Where Victim Returned Unharmed Before Ransom Paid	15	17	16	9	9	8
<b>KIDNAPPING/ABDUCTION TOTAL</b>	<b>98</b>	<b>105</b>	<b>106</b>	<b>82</b>	<b>93</b>	<b>85</b>
<b>LARCENY/THEFT OFFENSES</b>						
Grand Larceny	351	389	357	378	370	291
Second Conviction For Petit Larceny	1	1	1	0	1	0
Shoplifting - 3rd Offense	47	61	68	72	71	69
<b>LARCENY/THEFT OFFENSES TOTAL</b>	<b>399</b>	<b>451</b>	<b>426</b>	<b>450</b>	<b>442</b>	<b>360</b>
<b>MOTOR VEHICLE THEFT</b>						
Theft of Rental Vehicle; Penalty	0	0	0	0	1	0
Unlawful Taking Of Vehicle	0	1	2	0	1	0
<b>MOTOR VEHICLE THEFT TOTAL</b>	<b>0</b>	<b>1</b>	<b>2</b>	<b>0</b>	<b>2</b>	<b>0</b>
<b>OTHER</b>						
Accessory	2	0	1	4	1	0
Aiding Escape	1	0	0	1	2	1
Altering/Changing Manufacturer'S Serial Number On Motor Vehicle	1	0	1	1	0	1
An Inmate Of Jail/Corr Facility Possessing Poison, Dangerous Material, Controlled Subs	1	2	3	3	10	11
Attempt To Commit A Felony Punishable W/Term Less Than Life	194	134	126	96	130	95
Concealment Of Deceased Human Body	0	1	3	4	3	1
Conspiracy To Commit A Felony	366	243	201	190	215	141
Crashes Involving Death or Personal Injuries; Erin's Law	0	0	0	0	0	1
Cruelty To Animals	4	4	4	5	5	6
Disarming Officer Acting In Official Capacity	5	3	4	1	4	4
Disinterment Or Displacement Of Dead Body Or Part	1	1	1	1	0	0
Engaging In Organized Criminal Enterprise	0	0	1	1	1	0
Escape From Custody Of Division Of Corrections	2	6	4	5	14	15
Escape From Custody Of The Director Of Juvenile Services	1	0	2	3	4	3
Escape Of Persons In Custody Of Jail	6	5	9	7	8	4
Fail Pay Child Support	0	0	1	0	0	0
Fail To Register/Provide False Info Person Required To Register For 10 Yrs-3Rd Offense (5-25 Yrs)	0	1	1	1	0	0
Fail To Register/Provide False Info Person Required To Register For Life-2Nd Offense (10-25 Yrs)	0	1	4	5	6	9
Failure To Appear After Having Been Released On Bond	13	8	11	18	24	19
Failure To Meet An Obligation To Provide Support To Minor	7	7	7	9	5	2
Failure To Register/Change Registration Child Abuse	0	1	6	7	7	5
Failure To Register/Provide False Info As Sexually Violent Predator (2-10 Yrs)	1	3	2	3	2	1
Failure To Register; Felony Penalty	79	71	70	93	91	74
Fleeing From Officer; Vehicle - Death - Felony	1	1	1	0	0	0
Fleeing From Officer; Vehicle - Felony	36	107	114	118	202	201
Fleeing From Officer; Vehicle, Injury - Felony	1	1	2	0	12	8
Home Confinement/Probation Revocation	0	1	1	0	1	0
Leave Accident Involving Death - Felony	0	2	2	2	0	2
Malicious Killing Of Animals By Poison	0	1	1	1	0	0
Motor Vehicle or Special Mobile Equipment without ID	0	0	0	1	1	0
Obstruct Duties Of Public Official - 2Nd Offense	0	0	0	0	0	1
Obstructing An Officer	0	0	0	0	0	1
Obstruction or Removal of Any Part of Railroad	1	0	0	1	0	0
Offense by Inmate Resulting in 1-5 Yr. Term	1	0	0	0	1	0
Parole Hold	0	0	1	0	0	1
Perjury and Subordination of Perjury	0	0	0	0	1	0
Punishment For Accessory After The Fact	6	0	2	1	2	0
Punishment For Second or Third Offense of Felony	0	0	0	2	3	3
Reckless Driving; Penalties	0	1	1	2	6	5
Removal Out of County of Property Securing Claim	1	0	0	0	0	0
Retaliate -Other Person	0	1	0	1	0	0
Retaliate - Public Official	3	7	5	4	2	7
Revocation of Supervised Release	0	0	0	0	0	2
Sale to Prohibited Persons	0	0	1	0	0	0
Sexual Predator Failure To Register; Felony	4	9	17	10	20	15
Solicitation To Commit Non Violent Felonies	2	2	0	0	0	0
Solicitation To Commit Violent Felonies (3-15 Yrs)	0	2	1	1	1	0
Trespass on State Government Property-With Felonious Intent	0	0	0	1	0	1
Violating Civil Rights By Violence Or Threat	0	0	0	0	0	1
<b>OTHER TOTAL</b>	<b>740</b>	<b>626</b>	<b>611</b>	<b>603</b>	<b>784</b>	<b>641</b>

# Adult Prison Statistics

	FY2015	FY 2016	FY 2017	FY 2018	FY 2019	FY2020
<b>PORNOGRAPHY/OBSCENE MATERIAL</b>						
Distribution And Exhibiting Of Material Depicting	24	22	14	18	22	20
Employment Or Use Of Minor To Produce Obscene Matter Or Assist In Doing Sexually Explicit Conduct	0	0	2	1	2	1
Permits Use Of Minors In Filming Sexually Explicit Conduct	1	0	2	9	3	2
Photographing Minors In Sexually Explicit Conduct	4	5	4	3	2	0
Preparation, Distribution Or Exhibition Of Obscene Matter To Minor	5	4	3	2	6	7
Soliciting A Minor Via Computer	18	21	26	40	33	29
Use Of Obscene Matter With Intent To Seduce Minor-1st Offense	4	1	2	7	5	3
<b>PORNOGRAPHY/OBSCENE MATERIAL TOTAL</b>	<b>56</b>	<b>53</b>	<b>53</b>	<b>80</b>	<b>73</b>	<b>62</b>
<b>PROSTITUTION</b>						
Prostitution-2nd Offense	0	2	0	0	0	0
<b>PROSTITUTION TOTAL</b>	<b>0</b>	<b>2</b>	<b>0</b>	<b>0</b>	<b>0</b>	<b>0</b>
<b>ROBBERY</b>						
1St Deg Robbery With Weapons Specification/Att. 1St Deg. Robbery With Weapon (20 year & under sentence)	56	25	26	24	24	20
1St Deg Robbery With Weapons Specification/Att. 1St Deg. Robbery With Weapon (over 20 year sentence)	0	40	35	32	29	25
1St Deg Robbery/Attempted 1St Deg Robbery (20 year & under sentence)	418	269	270	245	242	190
1St Deg Robbery/Attempted 1St Deg Robbery (Over 20 year sentence)	0	169	161	184	166	167
Aggravated Bank Robbery - Weapon Specification (20 year & under sentence)	0	2	2	1	2	1
Aggravated Bank Robbery - Weapon Specification (over 20 year sentence)	6	5	5	2	2	2
Bank Robbery	17	17	14	13	12	10
Battery Police Officers, Etc... 3rd Offense	1	2	0	0	1	1
Robbery Or Attempted Robbery; Penalties	5	32	43	6	11	11
Second Degree Robbery	118	132	128	129	116	109
<b>ROBBERY TOTAL</b>	<b>621</b>	<b>693</b>	<b>684</b>	<b>636</b>	<b>605</b>	<b>536</b>
<b>SEX OFFENSE, FORCIBLE</b>						
Imposition Of Sexual Intercourse Or Sexual Intrusion On Incarcerated Persons By Corr. Employee	3	2	2	0	0	0
Parent, Guardian, Custodian Or Other Person In Position Of Trust Allowing Sexual Abuse Of Child	2	0	4	4	2	4
Rape	1	1	1	0	0	0
Sending, Distributing, Exhibiting, Possessing, Displaying Or Transporting Material By A Parent, Guardian	1	1	13	14	17	17
Sex Abuse 1St Deg (5-25 Yrs)	88	89	92	113	75	67
Sexual Abuse By Parent, Guardian, Custodian Or Other Person In Position Of Trust To A Child	357	355	366	335	399	393
Sexual Abuse In The First Degree	147	142	139	151	124	107
Sexual Abuse In The Third Degree	0	0	2	5	1	0
Sexual Assault In First Deg (25-100Yrs)	40	45	51	53	58	58
Sexual Assault In The First Degree	258	258	248	241	223	217
Sexual Assault In The Second Degree	130	128	131	135	133	131
<b>SEX OFFENSE, FORCIBLE TOTAL</b>	<b>1027</b>	<b>1021</b>	<b>1049</b>	<b>1051</b>	<b>1032</b>	<b>994</b>
<b>SEX OFFENSE, NON FORCIBLE</b>						
Incest	51	51	46	55	46	39
Indecent Exposure 3rd or Subsequent Offense	1	0	0	0	0	3
Mandatory Sentence for Certain Sex Offenses Against Children	0	0	0	0	1	1
Revocation Of Sex Offender Supervised Release	34	42	57	62	78	72
Sexual Assault In The Third Degree	151	148	137	132	129	94
<b>SEX OFFENSE, NON FORCIBLE TOTAL</b>	<b>237</b>	<b>241</b>	<b>240</b>	<b>249</b>	<b>254</b>	<b>209</b>
<b>STOLEN PROPERTY</b>						
Bringing Into This State, Receiving Or Disposing Of Stolen Property	7	6	8	6	8	3
Receiving Or Transferring Stolen Goods	38	46	56	44	45	31
Receiving Or Transferring Stolen Vehicle	25	19	19	26	30	26
<b>STOLEN PROPERTY TOTAL</b>	<b>70</b>	<b>71</b>	<b>83</b>	<b>76</b>	<b>83</b>	<b>60</b>
<b>WEAPON LAW VIOLATION</b>						
Carrying Deadly Weapon Without License Or Other Authorization-2nd Offense	2	1	1	0	1	1
Criminal Use Of Destructive Device, Explosive Mate	1	1	1	1	0	0
Delivers Firearm, Drugs, Alcohol, Etc To A Defendant In Jail	0	5	2	3	5	4
False Reports Concerning Bombs or Other Explosive Devices	0	0	0	0	1	0
Illegal Possession of Destructive Device/Explosive	1	0	0	1	2	5
Persons Prohibited From Possessing Firearms	38	36	32	48	68	73
Possessing Deadly Weapons on Premises of Education	0	1	0	0	1	1
Threats Of Terrorist Acts/Conveying False Info Re Terrorist Acts/Committing Terrorist Hoaxes	5	4	5	2	5	3
Transports Firearm, Drugs, Alcohol, Etc Onto Grounds	1	1	6	10	8	6
Use or presentation of Firearm during Commission of a Felony; penalties	0	0	0	0	2	13
Wanton Endangerment Involving Destructive Devices	16	2	2	4	1	3
<b>WEAPON LAW VIOLATION TOTAL</b>	<b>64</b>	<b>51</b>	<b>49</b>	<b>69</b>	<b>94</b>	<b>109</b>
<b>GRAND TOTAL</b>	<b>6914</b>	<b>7001</b>	<b>7014</b>	<b>7184</b>	<b>7262</b>	<b>6253</b>

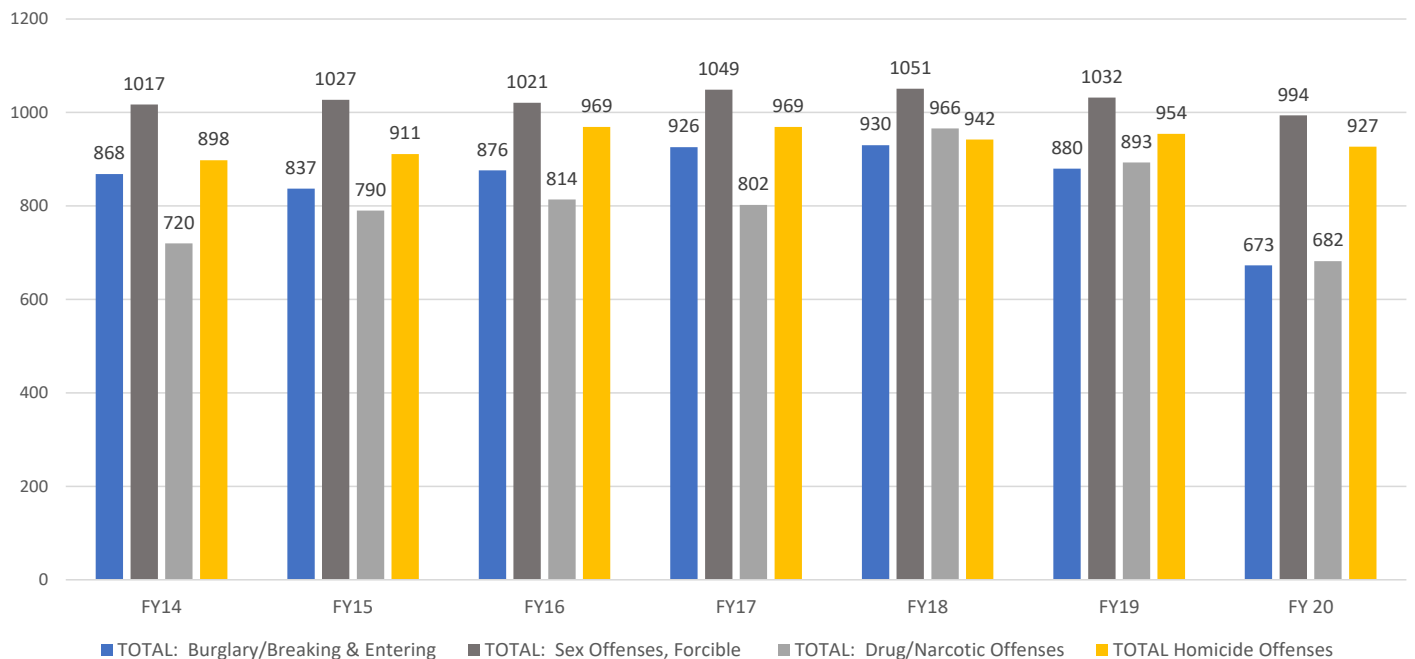
\*Note: An error in the 2018 statistics for Attempt to Commit a Felony Punishable with Life-updated in 2019 statistics

# Adult Prison Statistics

The following table shows the number and percent of WV prison sentenced offenders by their most serious crime from FY 2014 - FY 2020.

Category	FY 14		FY15		FY 16		FY 17		FY 18		FY 19		FY 20	
	Number	Percent	Number	Percent	Number	Percent	Number	Percent	Number	Percent	Number	Percent	Number	Percent
Abduction/Kidnapping	102	1.5%	103	1.5%	109	1.6%	110	1.6%	87	1.2%	96	1%	89	1%
Arson	50	0.7%	49	0.7%	52	0.7%	44	0.6%	38	0.5%	39	1%	21	0%
Assault	376	5.5%	347	5.0%	314	4.5%	330	4.7%	368	5.1%	376	5%	337	5%
Bribery	0	0.0%	0	0.0%	1	0.0%	1	0.0%	3	0.0%	2	0%	3	0%
Burglary/B&E	868	12.8%	837	12.1%	876	12.5%	926	13.2%	930	12.9%	880	12%	673	11%
Child Abuse/Neglect	165	2.4%	178	2.6%	180	2.6%	172	2.5%	143	2.0%	154	2%	127	2%
Counterfeiting/Forgery	218	3.2%	203	2.9%	191	2.7%	191	2.7%	184	2.6%	165	2%	148	2%
Destruction/Damage/Vandalism of Property	16	0.2%	25	0.4%	21	0.3%	17	0.2%	28	0.4%	19	0%	19	0%
Drug/Narcotic Offense	722	10.6%	790	11.4%	814	11.6%	802	11.4%	966	13.4%	893	12%	682	11%
DUI	122	1.8%	127	1.8%	116	1.7%	114	1.6%	136	1.9%	149	2%	120	2%
Embezzlement	22	0.3%	8	0.1%	12	0.2%	17	0.2%	14	0.2%	21	0%	14	0%
Extortion/Blackmail	2	0.0%	1	0.0%	0	0.0%	0	0.0%	1	0.0%	0	0%	0	0%
Fraud	130	1.9%	121	1.8%	136	1.9%	124	1.8%	130	1.8%	145	2%	122	2%
Homicide	898	13.2%	911	13.2%	969	13.8%	969	13.8%	941	13.1%	954	13%	927	15%
Larceny/Theft Offenses	373	5.5%	399	5.8%	451	6.4%	426	6.1%	450	6.3%	442	6%	360	6%
Motor Vehicle Theft	1	0.0%	0	0.0%	1	0.0%	2	0.0%	0	0.0%	2	0%	0	0%
Other	714	10.5%	740	10.7%	626	8.9%	611	8.7%	604	8.4%	784	11%	641	10%
Pornography/Obscene Material	40	0.6%	56	0.8%	53	0.8%	53	0.8%	80	1.1%	73	1%	62	1%
Prostitution	0	0.0%	0	0.0%	2	0.0%	0	0.0%	0	0.0%	0	0%	0	0%
Robbery	644	9.5%	621	9.0%	693	9.9%	684	9.8%	636	8.9%	605	8%	536	9%
Sex Offense, Forcible	1017	15.0%	1027	14.9%	1021	14.6%	1049	15.0%	1051	14.6%	1032	14%	994	16%
Sex Offense, Non Forcible	206	3.0%	237	3.4%	241	3.4%	240	3.4%	249	3.5%	254	3%	209	3%
Stolen Property	57	0.8%	70	1.0%	71	1.0%	83	1.2%	76	1.1%	83	1%	60	1%
Weapon Law Violation	39	0.6%	64	0.9%	51	0.7%	49	0.7%	69	1.0%	94	1%	109	2%
Totals	6782	100.0%	6914	100.0%	7001	100.0%	7014	100.0%	7184	100.0%	7262	100%	6253	100%

WV DCR Top 4 Crimes by Prison Sentenced Offenders  
FY14-FY20



# Adult Prison Statistics

## Offender Demographics

### Sentence Type

Sentence Type	#	%
Habitual Life	57	.91%
Life With Mercy	301	4.81%
Life Without Mercy	291	4.65%
Regular	5064	89.62%
<b>Grand Total</b>	<b>6253</b>	<b>100%</b>

The table above shows inmates by Sentence Type as of June 30, 2020. Life with mercy and life without mercy sentences are typically for first degree murder. However, kidnapping offenses can carry a life without mercy sentence as well. Habitual life offenders are serving life with mercy sentences for repeat offenses. This table includes all WVDCR prison sentenced inmates.

### Security Classification

Security Class	#	%
Community	206	4.26%
Minimum	757	15.66%
Medium	2860	59.16%
Close	419	8.67%
Maximum	418	8.65%
Receiving/Intake	174	3.6%
<b>Grand Total</b>	<b>4834</b>	<b>100%</b>

The security classification breakdown is for those inmates held in WVDCR prisons on June 30, 2020. Inmates classified as Receiving/Intake have not been through the formal classification process and are still assigned to an intake/diagnostic unit. This table **does not** include felons housed in the regional jails sentenced to prison. The remaining four tables on this page depict demographic information for inmates sentenced to the custody of prison, but it **does not** include those housed in regional jails.

### Education Level

Education Category	#	%
Did Not Graduate High School	2487	51.45%
High School Diploma	1985	41.06%
Post High School Education	347	7.18%
Unknown	15	.31%
<b>Grand Total</b>	<b>4834</b>	<b>100%</b>

### Race & Gender

Race	Gender	#	%
American Indian/Alaska Native	M	3	.06%
	F	1	.02%
Asian	M	1	.02%
	F	1	.02%
Black	M	582	12.04%
	F	27	.56%
Hispanic or Latino	M	19	.39%
	F	3	.06%
Multi-Racial or Other	M	41	.85%
	F	0	.00%
Native Hawaiian or Pacific Islander	M	1	.02%
	F	0	.00%
White	M	3741	77.39%
	F	415	8.59%
<b>Grand Total</b>		<b>4834</b>	<b>100%</b>

### Age Category

Age Category	#	%
Under 20	3	.06%
20 - 29	926	19.16%
30 - 39	1565	32.37%
40 - 49	1155	23.89%
50 - 59	715	14.79%
60 - 69	352	7.28%
70 - 79	105	2.17%
80 and Over	13	.27%
<b>Grand Total</b>	<b>4834</b>	<b>100%</b>

### Classes Completed

Class /Programs Category	Number Completing Class
Affective Social Programs	2273
Computer Classes	38
Crime Specific Classes	324
Education Classes	4872
College Courses	207
Parole	47
Pre-Release Preparation Classes	203
Lifeskills Classes	130
Substance Abuse Classes	1022
Vocational Classes	545
<b>Total Classes Completed</b>	<b>9661</b>

# Jail Statistics

TOP 30 CHARGES FY 2020	
CAPIAS	4060
DOMESTIC BATTERY	3505
OBSTRUCTING	2432
FUGITIVE FROM JUSTICE	1852
POSS C\S	1837
Grand Larceny	1475
PROBATION VIOLATION	1452
DUI	1444
DOMESTIC ASSAULT	1366
CONSPIRACY	1358
POSSESSION OF CONTROLLED SUBSTANCE	1344
DRIVING REVOKED FOR DUI	1200
DESTRUCTION OF PROPERTY	1160
TRESPASSING	1150
PETIT LARCENY	1142
OBSTRUCTING AN OFFICER	1134
WARRANT	1101
NO INSURANCE	1094
DISORDERLY CONDUCT	1024
POSS W/INTENT	987
HOME CONFINEMENT VIOLATION	959
PUBLIC INTOXICATION	947
BURGLARY	852
DRIVING SUSPENDED	816
SHOPLIFTING	798
BAILPIECE	779
SEE HARD COPY	672
BATTERY	662
PAROLE HOLD	657
PROHIBITED PERSON W/FIREARM	648

TOP 25 DRUG AND ALCOHOL RELATED CHARGES FY 2020	
POSS C\S	1837
DUI	1444
POSSESSION OF CONTROLLED SUBSTANCE	1344
DRIVING REVOKED FOR DUI	1200
POSS W/INTENT	987
PUBLIC INTOXICATION	947
DRIVING SUSPENDED	816
DUI 1ST OFFENSE	506
AGGRAVATED DUI	430
POSSESSION WITH INTENT TO DELIVER A CONTROLLED SUBSTANCE	430
POSSESSION WITH INTENT	428
DUI 2ND OFFENSE	365
POSSESSION OF METH	338
SIMPLE POSSESSION	315
DRIVING REVOKED FOR DUI 3RD	305
Manufacture/Deliver Sch I,ii,iii Controlled Substance	283
POSS MARIJUANA	269
DELIVERY OF A CONTROLLED SUBSTANCE	261
DRIVING REVOKED FOR DUI 2ND	203
DUI CONTROLLED SUBSTANCE	201
DUI WITH DRUGS	201
OPEN CONTAINER	185
POSSESSION OF MARJUANA	183
POSSESSION	167
Manufacture/Deliver Sch I,ii Controlled Narcotic Substance	138

\*Data based off of admissions and include: Convicted felons and misdemeanors, Division of Corrections Inmates, Federal Sentenced and Pretrial Offenders and Pre-trial Felons and Misdemeanors.

# Jail Statistics

Admissions and Releases												
FACILITY	2015		2016		2017		2018		2019		2020	
	ADMISSIONS	RELEASES	ADMISSIONS	RELEASES	ADMISSIONS	RELEASES	ADMISSIONS	RELEASES	ADMISSIONS	RELEASES	ADMISSIONS	RELEASES
Central	3050	3039	2796	2744	3066	2861	2929	2734	2971	2759	2531	2427
Eastern	5527	5515	5404	5297	5507	5247	5475	5257	4990	4849	4434	4361
North Central	5677	5599	5604	5330	6187	5612	7134	6311	5937	6264	4594	5369
Northern	3447	3384	3070	3055	3053	2800	3154	2899	3361	3089	3011	2856
Potomac Highlands	2410	2483	1850	1964	2402	2247	2352	2195	2228	2102	1854	1796
South Central	6270	6245	6684	6518	7233	6647	7352	6755	7577	6934	5788	5379
Southern	6534	6447	6749	6342	6786	6258	7400	6777	7050	6634	6489	6122
Southwestern	3451	3524	3570	3519	3159	2990	3421	3281	3525	3300	3598	3498
Tygart Valley	2751	2803	2631	2578	3250	3017	3105	2793	3271	2999	2981	2887
Western	6293	6163	6457	6087	6685	6286	6431	5941	6141	5766	4863	4860
<b>TOTAL</b>	<b>45,410</b>	<b>45,202</b>	<b>44,815</b>	<b>43,434</b>	<b>47,328</b>	<b>43,965</b>	<b>48,753</b>	<b>44,943</b>	<b>47,051</b>	<b>44,696</b>	<b>40,143</b>	<b>39,555</b>

Admissions By Race	Male	Female	Unknown	Blank	Total FY 2020
Blank	13	5	0	8	26
American Indian/Alaska Native	13	6	0	0	19
Asian	55	2	0	0	57
Black	3683	620	0	0	4303
Hispanic or Latino	437	40	0	0	477
Multi-Racial or Other	155	47	0	0	202
Native Hawaiian or Pacific Islander	1	1	0	0	2
White	25705	9351	1	0	35057
<b>Total</b>	<b>30062</b>	<b>10072</b>	<b>1</b>	<b>8</b>	<b>40143</b>

Admissions by Age Group	Total FY 2020
Blank	6
Under 20	859
20-29	11582
30-39	14144
40-49	8647
50-59	3796
60-69	963
70+	146
<b>Total</b>	<b>40143</b>

\*The statistics on this page include: Convicted felons and misdemeanors, Division of Corrections Inmates, Federal Sentenced and Pretrial Offenders and Pre-trial Felons and Misdemeanors.

# Jail Statistics

## Average Daily Inmate Population by Fiscal Year

REGIONAL JAIL FACILITY	FY 10	FY 11	FY 12	FY 13	FY 14	FY 15	FY 16	FY 17	FY 18	FY 19	FY 20
Central	279	318	324	319	308	310	310	308	353	355	355
Eastern	372	423	449	489	429	399	392	475	514	478	421
North Central	529	574	631	635	587	575	615	658	694	787	794
Northern	313	324	351	320	285	267	299	307	321	328	345
Potomac Highlands	258	293	313	303	256	226	257	295	306	288	280
South Central	457	499	514	529	474	451	478	532	530	580	521
Southern	491	524	539	556	576	579	581	555	603	633	642
Southwestern	389	415	470	505	417	410	400	444	511	482	479
Tygart Valley	363	391	446	503	449	406	444	500	526	515	493
Western	533	559	609	642	578	587	630	611	736	726	664
<b>TOTAL</b>	<b>3,984</b>	<b>4,320</b>	<b>4,646</b>	<b>4,801</b>	<b>4,359</b>	<b>4,210</b>	<b>4,406</b>	<b>4,685</b>	<b>5,095</b>	<b>5,172</b>	<b>4,994</b>

## FY 2020 Average Daily Institutional Inmate Population Report By Type & Gender

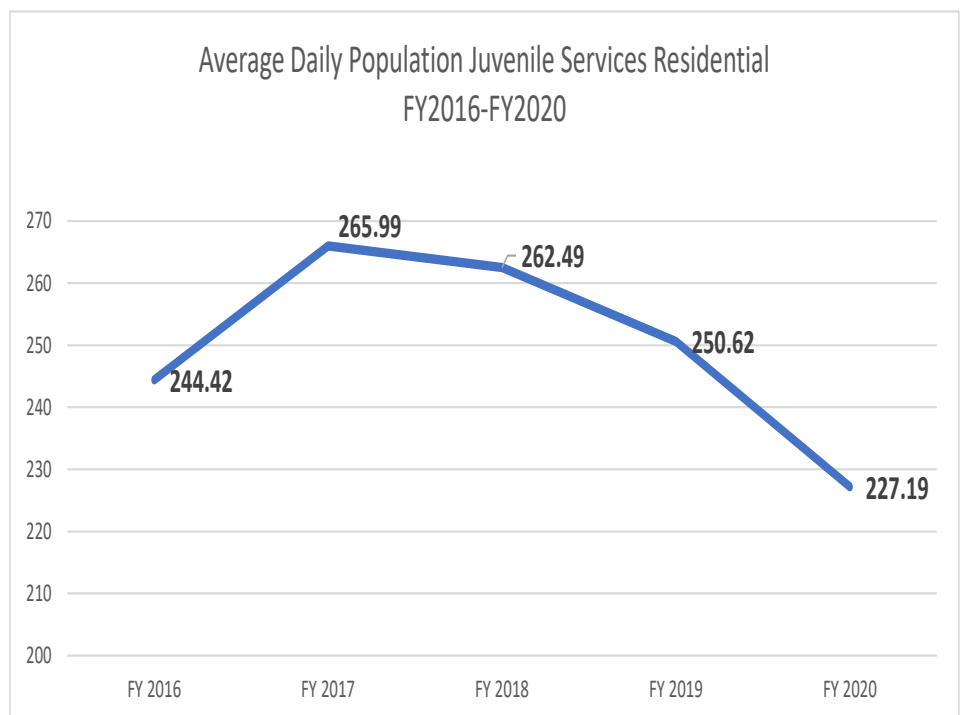
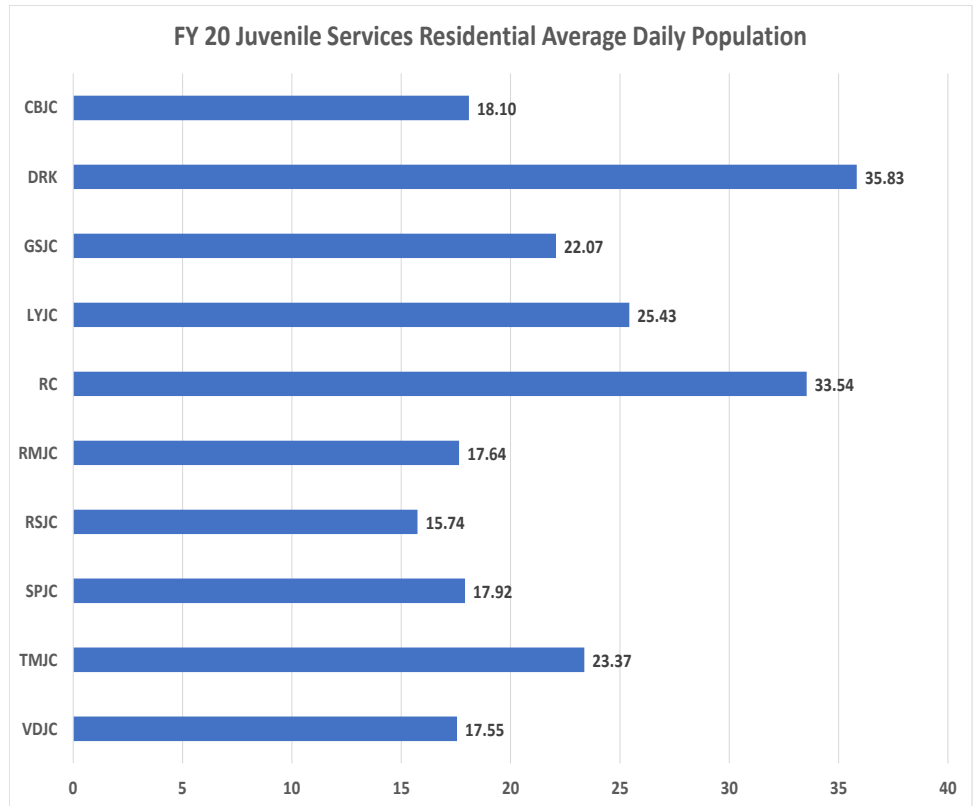
RJA FACILITY	DOC Division of Corrections		FP Federal Inmate Pretrial		FS Federal Inmate Sentenced		PTM Pretrial Misdemeanor		CM Convicted Misdemeanor		PTF Pretrial Felon		CF Convicted Felon		Average Daily Total
	Males	Females	Males	Females	Males	Females	Males	Females	Males	Females	Males	Females	Males	Females	
CRJ	60	15	14	2	2	0	29	10	16	3	129	24	43	8	355
ERJ	118	9	35	3	0	0	40	11	26	7	124	27	17	4	421
NCRJ	99	16	10	2	1	1	79	24	40	11	322	61	100	28	794
NRJ	103	16	37	5	0	0	27	8	20	2	100	17	8	2	345
PHRJ	140	5	2	0	0	0	21	7	9	1	57	15	18	5	280
SCRJ	95	16	65	6	3	0	47	12	12	2	188	39	29	7	521
SRJ	128	21	25	2	1	1	63	23	23	4	265	51	28	7	642
SWRJ	199	36	0	0	0	0	36	13	16	2	119	30	22	6	479
TVRJ	78	105	14	4	0	0	39	11	21	3	133	33	38	14	493
WRJ	168	32	10	2	1	0	46	10	26	5	205	40	99	20	664
<b>TOTAL</b>	<b>1188</b>	<b>271</b>	<b>212</b>	<b>26</b>	<b>8</b>	<b>2</b>	<b>427</b>	<b>129</b>	<b>209</b>	<b>40</b>	<b>1642</b>	<b>337</b>	<b>402</b>	<b>101</b>	<b>4994</b>
Total combined	1459		238		10		556		249		1979		503		4994

\*The statistics on this page include: Convicted felons and misdemeanors, Division of Corrections Inmates, Federal Sentenced and Pretrial Offenders and Pre-trial Felons and Misdemeanors.



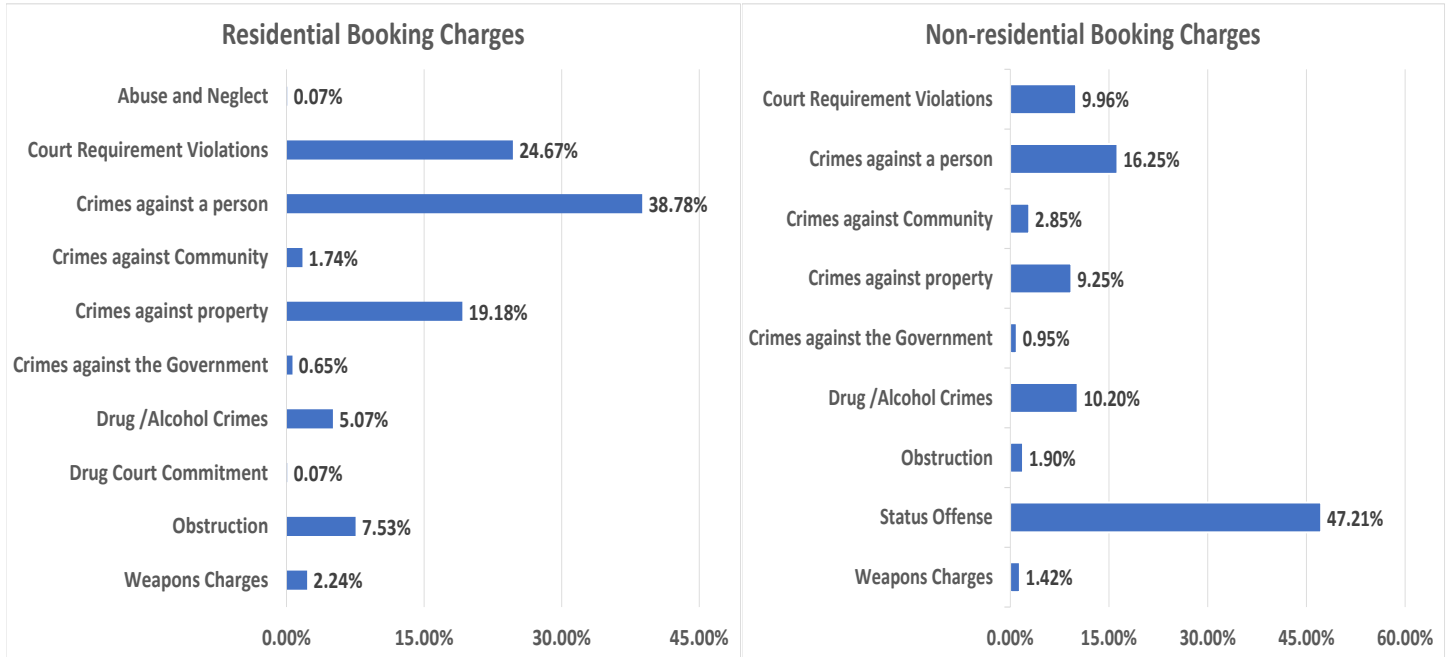
# Juvenile Services Statistics

County	Count on 6/30/20
Barbour	4
Berkeley	13
Boone	2
Braxton	2
Brooke	4
Cabell	20
Calhoun	4
Clay	1
Fayette	2
Gilmer	2
Grant	3
Greenbrier	3
Hampshire	5
Hancock	1
Hardy	6
Harrison	6
Jackson	4
Jefferson	4
Kanawha	14
Lincoln	1
Logan	4
Marion	7
Marshall	3
Mason	1
McDowell	1
Mercer	11
Mineral	2
Mingo	2
Monongalia	9
Monroe	1
Morgan	1
Nicholas	2
Ohio	3
Pleasants	2
Preston	3
Putnam	4
Raleigh	4
Randolph	4
Ritchie	1
Roane	4
Summers	2
Tucker	2
Upshur	1
Wayne	3
Webster	1
Wood	20
Wyoming	3
<b>Grand Total</b>	<b>202</b>

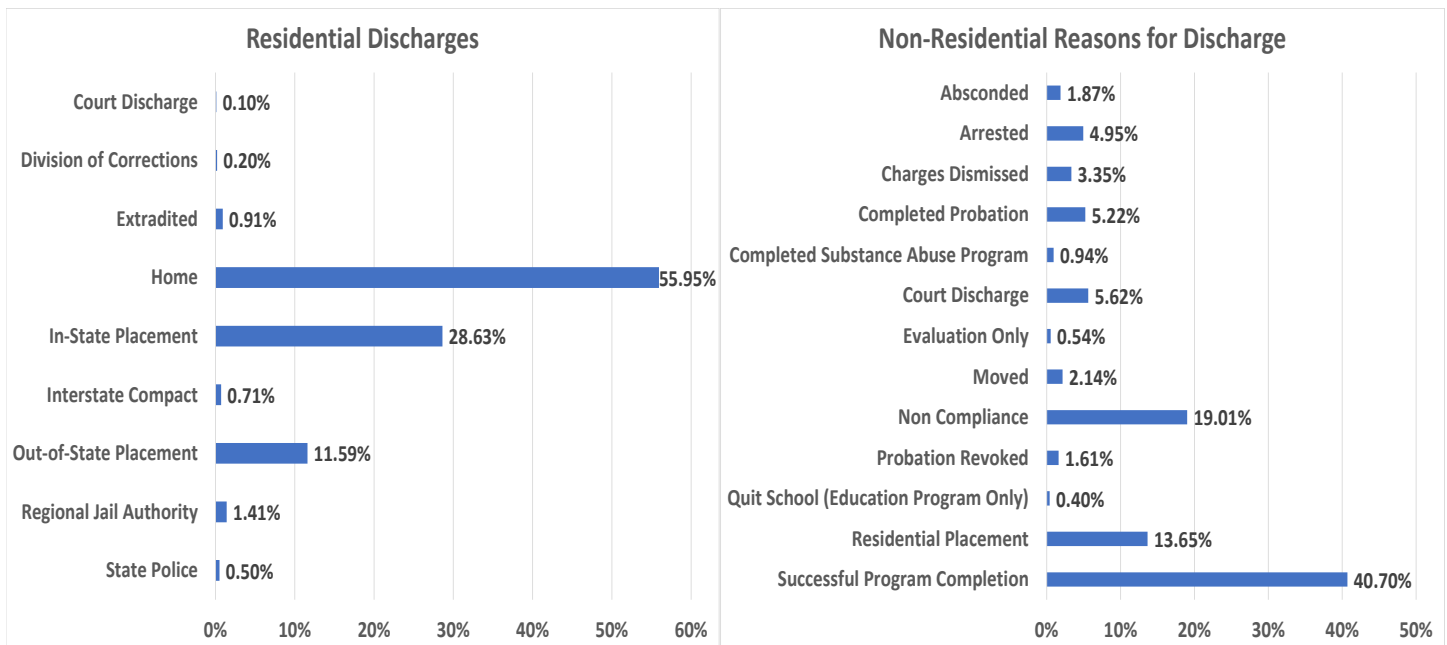


# Juvenile Services Statistics

## Bookings FY2020



## Discharges FY 2020



# Juvenile Services Statistics

Crime	Count on 6/30/20
Court Requirement Violations	44
Bond Revocation: Failure To Appear	1
Capias	11
Failure To Appear For A Felony	1
Probation Violation	19
Violate Home Conf/Alternative Sentence	2
Violation Of Improvement Period	1
Violation Of Probation	9
<b>Crimes against a person</b>	<b>100</b>
Assault: Domestic	13
Assault: Public Official - Attempted	1
Assault: Simple	3
Battery	20
Battery: Against Officer/Official/Employ	6
Battery: Domestic	10
Battery: Unlawful Against Officer/Employ	1
Child Pornography	1
Domestic Violence: No Injury/Weapon	7
Malicious Wounding	1
Murder: 1st Degree Or Attempt	6
Murder: 2nd Degree Or Attempt	1
Robbery: 1st Deg W/Violence To Person	1
Robbery: 1st Deg W/Weapon	4
Robbery: 2nd Deg	1
Sex Asslt: 2nd Deg; Intercour W/Helpless	1
Sex Offense: Indecent Exposure	1
Sex Offense: Sexual Abuse 1st Degree	2
Sex Offense: Sexual Abuse 3rd Dgree	1
Sex Offense: Sexual Assault 1st Degree	4
Sex Offense: Sexual Assault 2nd Degree	3
Sexual Abuse	3
Sexual Abuse: 1st Degree	4
Strangulation	1
Telephone: Obscene/Harass/Threat/Anonym	1
Wanton Endangerment: Involving Firearm	3
<b>Crimes against Community</b>	<b>3</b>
Disorderly Conduct	1
Disturbance Of Schools, Societies, Other	1
Threat/Terror Act; Convey False Info	1
<b>Crimes against property</b>	<b>39</b>
Arson: 1st Deg. Aid/Abet Dwell/Outhouse	1
Arson: 1st Degree-Dwelling Or Outbuildin	2
Arson: 4th Degree	1
Arson: Insured Prpty Burn A/O Aid/Abet	1
Breaking & Entering	10
Burglary: Daytime W/O Breaking	1
Destruction Of Property	12
Entering w/o Breaking	1
Fraud: Counterfeit Credit Card	1
Larceny: Grand	4
Larceny: Petit	2
Stolen Goods: Poss/Rec/Tranf	1
Tampering: Vehicle/Remove Parts	1
Threats of Terrorist Acts (61-6-24(b))	1
<b>Drug /Alcohol Crimes</b>	<b>8</b>
Possession of Marijuana	1
Possession with the Intent to Deliver a Controlled Substance	7
<b>Obstruction</b>	<b>5</b>
Contempt Of Court	1
Escape: Official Custody	1
Fleeing: Officer - Vehicle	1
Fleeing: Officer Non-Vehicle	2
<b>Weapons Charges</b>	<b>3</b>
Brandishing Deadly Weapon	3
<b>Grand Total</b>	<b>202</b>

## WV Bureau of Juvenile Services: Residential By Crime Category 6/30/2020

Crime Category	Count	Percentage
Court Requirement Violations	44	21.78%
Crimes against a person	100	49.50%
Crimes against Community	3	1.49%
Crimes against property	39	19.31%
Drug /Alcohol Crimes	8	3.96%
Obstruction	5	2.48%
Weapons Charges	3	1.49%
<b>Grand Total</b>	<b>202</b>	<b>100.00%</b>

## WV Bureau of Juvenile Services: Residential by Race/Gender 6/30/20

Gender	Count	Percentage
Female	42	20.79%
Male	160	79.21%
<b>Grand Total</b>	<b>202</b>	<b>100.00%</b>

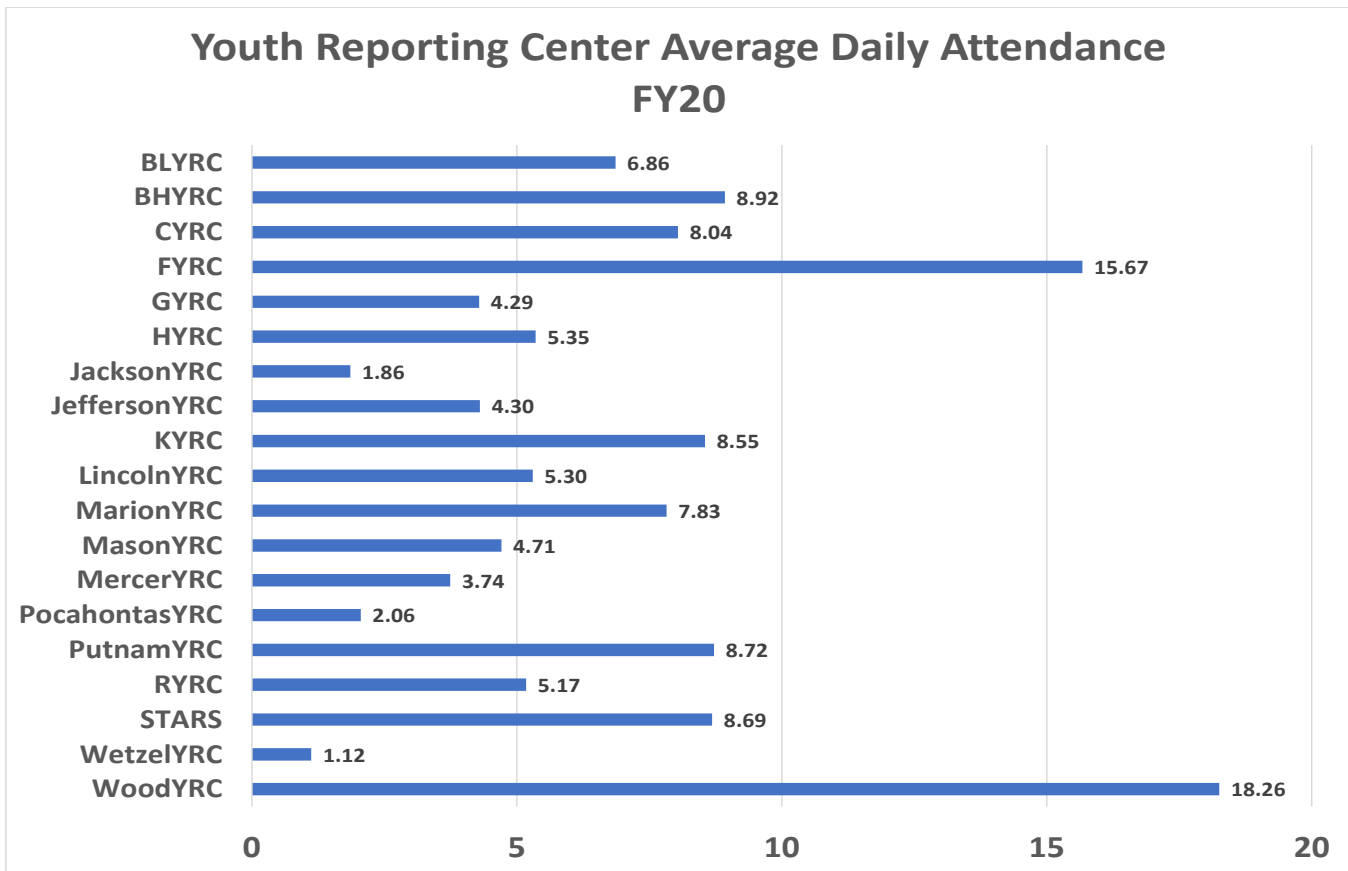
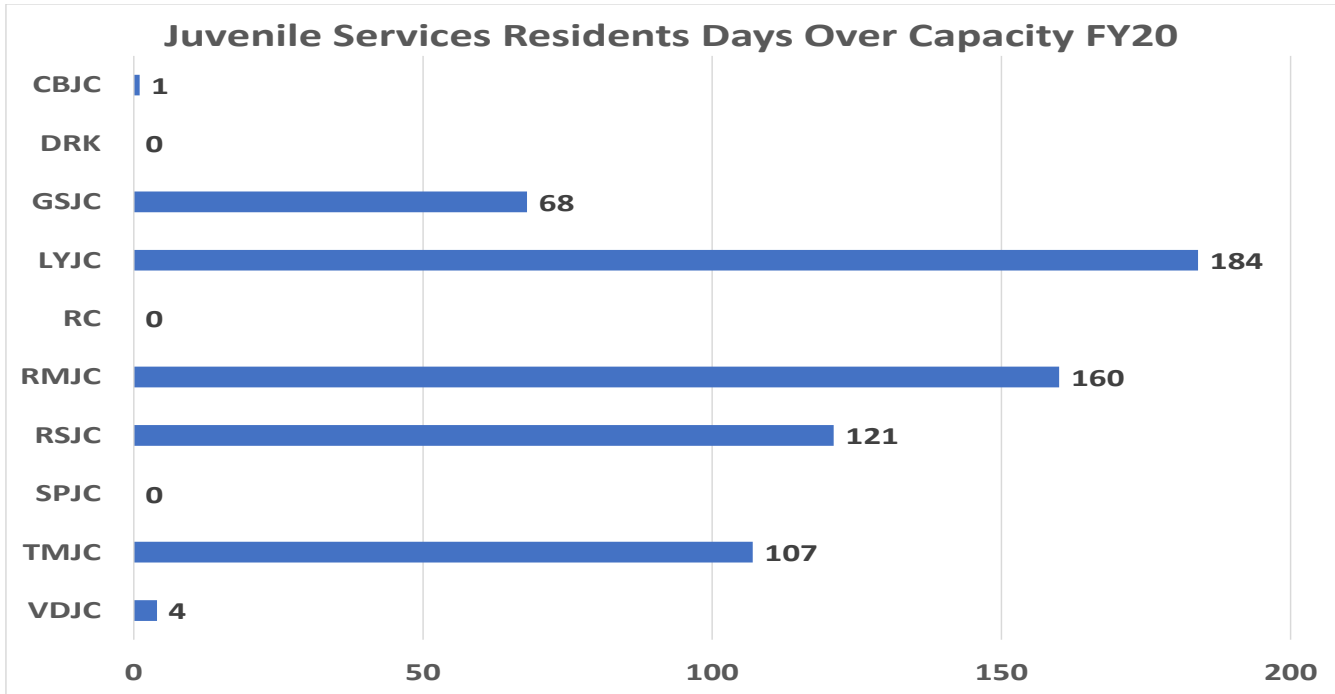
Race	Count	Percentage
American Indian/Alaska Native	1	0.50%
Black Non-Hispanic	27	13.37%
Other	11	5.45%
Other - Hispanic	4	1.98%
White Hispanic	6	2.97%
White Non-Hispanic	153	75.74%
<b>Grand Total</b>	<b>202</b>	<b>100.00%</b>

## WV Bureau of Juvenile Services: Residential By Age 6/30/20

Age	Count	Percentage
11	2	0.99%
12	3	1.49%
13	3	1.49%
14	18	8.91%
15	19	9.41%
16	49	24.26%
17	43	21.29%
18	45	22.28%
19	14	6.93%
20	4	1.98%
21	2	0.99%
<b>Grand Total</b>	<b>202</b>	<b>100.00%</b>

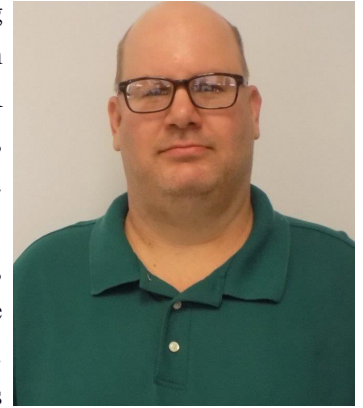
\*Each juvenile is represented only once, by their most serious crime.

# Juvenile Services Statistics



# WVDCR Employee of the Year

I am pleased to announce that in recognition of his accomplishments and critical life-saving actions, Mount Olive Correctional Complex & Jail Case Manager Scotty Hypes has been named as the DCR 2019 Employee of the Year. Scotty has been employed with the DCR for approximately 22 years, and he demonstrates an unwavering commitment to the care, custody and control of our inmate population, and the safety of those he is sworn to protect.



He is recognized as a dedicated, experienced, and accomplished employee. Unfortunately, a recognition ceremony for Scotty is not possible due to social distancing restrictions of the pandemic, so please be sure to reach out and join us in congratulating him on this honor. Scotty was selected from a field of outstanding nominees, all of whom are a credit to this agency, and which makes his selection for this award especially commendable. Both his professionalism and his personal attributes reflect well for the DCR, and we are proud to recognize Case Manager Hypes as the Employee of the Year.

Congratulations, Scotty! Thank you for your service and for all you do for DCR and the citizens of West Virginia. Also, a special Thank YOU goes out to ALL correctional staff for the work you do and dedication you have to the WVDCR. It does not go unnoticed!

Betsy Jividen, Commissioner, WVDCR

FACILITY	EOY NOMINEE
ACC	Robert Cox; Todd Spence; Jarrod Moore; Johnny Mullins; Charles Gore
BCC	Ella Meador
CBJC	Martin Quinn
CCC	Bryer Lynch
CENTRAL OFFICE	Betty Slack
CID	Robin Ramey
CRJ	Tonya Peters
DCC	Allen Tracy
DRKJC	David Michael
ERJ/MCC	Quintin Dixon
GSJC	Susan Lambert
HCC	Bonnie Krause
KHRJC	Donald Wolford; Ronald Wolford
LCC	Janice Durst
LYJC	Emily Melrose
MCD/ST.CC	Jeanne Reed
MOCC	Scotty Hypes
NCRJ	Shannon Sams
NRJ/NCC/OCCC	Janis Vucelik
PAROLE SERVICES	Shari Wince
PBCC	Tab Brown
PCC	Jesse Farnsworth
PHRJ	James Shockey
PRISON INDUSTRIES	Floyd Keeney
RSJC	Cheryl McVay
SCC	Carol Tingler
SCRJ	Samantha Baber
SMCC	Scott Smith
SPECIAL OPS	Leonard Barnett
SPJC	William Fain
SRJ	Robyn Robertson
SWRJ	Lillian Frye
TMJC	David Murphy
TRI-COUNTY YRC	Amber Dingess
TVRJ	Sara Trader
WRJ	Christopher Fleming
WVCA	Richard Dorsey

# WV DCR Facility Directory

12/28/20

WVDCR Facilities List			
<b>Anthony CC</b> ACC		<b>Beckley CC and Jail</b> BCC	
313 Anthony Center Dr. White Sulphur Springs, WV 24986		111 S. Eisenhower Dr. Beckley, WV 25801	
<i>Rob Neal</i>	533-3911 FAX: 536-3916	<i>William J. Vest</i>	256-6780 FAX: 256-6782
<b>Denmar CC and Jail</b> DCC		<b>Huttonsville CC and Jail</b> HCC	
4319 Denmar Rd. Hillsboro, WV 24946		PO Box 1 Huttonsville, WV 26273	
<i>Mark Williamson</i>	653-4201 FAX: 653-4855	<i>Shelby Searls</i>	335-2291 FAX: 335-4256
<b>Martinsburg CC and Jail</b> MCC		<b>Mt. Olive CC and Jail</b> MOCC	
38 Grapevine Rd. Martinsburg, WV 25401		1 Mountainside Way Mt. Olive WV 25185	
<i>Scott E. Paugh</i>	267-0156 FAX: 267-0196	<i>Donnie Ames</i>	442-7213 FAX: 442-7225
<b>Ohio Co. CC and Jail</b> OCCC		<b>Parkersburg CC and Jail</b> PBCC	
1501 Eoff St. Wheeling, WV 26003		225 Holiday Hills Dr. Parkersburg, WV 26104	
<i>Shawn Straughn</i>	238-1007 FAX: 238-1008	<i>Aaron Westfall</i>	420-2443 FAX: 420-2477
<b>Saint Marys CC and Jail</b> SMCC		<b>Salem CC and Jail</b> SCC	
2880 N. Pleasants Hwy. St. Marys, WV 26170		7 Industrial Blvd. Industrial, WV 26426	
<i>Russell Maston</i>	684-5500 FAX: 684-5506		Crt. Ords FAX: 782-4285
<b>Central RJ and CF</b> CRJ		<b>John Anderson</b> 782-2371 FAX: 782-4816	
1255 Dyer Hill Rd. Sutton, WV 26601		<b>Eastern RJ and CF</b> ERJ	
<i>Harvey Hawkins</i>	765-7904 FAX: 765-3341	94 Grapevine Rd. Martinsburg, WV 25405	
<b>North Central RJ and CF</b> NCRJ		<i>Scott Paugh</i> 267-0046 FAX: 267-0049	
1 Lois Ln. Greenwood, WV 26415		<b>Potomac Highlands RJ and CF</b> PHRJ	
<i>Joe Wood</i>	873-1384 FAX: 873-1381	355 Dolan Dr. Augusta, WV 26704	
<b>Southern RJ and CF</b> SRJ		<i>Didymus Tate</i> 496-1275 FAX: 496-7591	
1200 Airport Rd. Beaver, WV 25813		<b>Southwestern RJ and CF</b> SWRJ	
<i>Michael Francis</i>	256-6726 FAX: 256-6739	1300 Gaston Caperton Dr. Holden, WV 25625	
<b>Western RJ and CF</b> WRJ		<i>Timothy King</i> 239-3032 FAX: 239-3079	
1 O'Hanlon Pl. Barboursville, WV 25504		<b>Donald R. Kuhn JC</b> DRK	
<i>Carl Aldridge</i>	733-6821 FAX: 733-6867	1 Lory Pl. Julian, WV 25529	
<b>J.M. "Chick" Buckbee JC</b> CBJC		<i>Brian Semenie</i> 369-2976 FAX: 369-2991	
144 Jerry Ln. Augusta, WV 26704		<b>Kenneth "Honey" Rubenstein JC</b> RC	
<i>Barbara Spaid</i>	496-1341 FAX: 496-1475	141 Forestry Camp Rd. Davis, WV 26260	
<b>Robert L. Shell JC</b> RSJC		<i>Dan Dilly</i> 259-5241 FAX: 259-4851	
2 O'Hanlon Pl. Barboursville, WV 25504		<b>Ronald C. Mulholland JC</b> RMJC	
<i>John Marchio</i>	948-2190 FAX: 733-6827	PO Box 6041 Wheeling, WV 26003	
<b>James H. "Tiger" Morton JC</b> TMJC		<i>Linda Scott</i> 232-3441 FAX: 233-3371	
60 Manfred Holland Way Dunbar, WV 25064		<b>Vicki V. Douglas JC</b> VDJC	
<i>Jeremy Dolin</i>	766-2616 FAX: 766-2687	900 Emmett Rousch Dr. Martinsburg, WV 25401	
		<i>Sharon Parsons</i> 267-0164 FAX: 267-0168	
		<b>Charleston CC and Jail</b> CCC	
1356 Hansford St. Charleston, WV 25301		<i>Jeff A. Stinnett</i> 340-6921 FAX: 558-1537	
<b>Lakin CC and Jail</b> LCC		<b>Northern CF</b> NCC	
11264 Ohio River Rd. West Columbia, WV 25287		112 Northern Regional Correctional Dr. Moundsville, WV 26041	
<i>J.D. Sallaz</i>	674-2440 FAX: 674-6199	<i>Shawn Straughn</i> 843-4067 FAX: 843-4073	
<b>Pruntytown CC and Jail</b> PCC		<b>Stevens CC / McDowell Co.</b> MCDO	
PO Box 159 Grafton, WV 26354		795 Virginia Ave. / 50 Court St. Welch, WV 24801	
	Records FAX: 265-6130	436-8530 FAX: 436-8565	
<i>George Trent</i>	265-6111 FAX: 265-6120	<i>R.S. Mutter</i> 436-5420 FAX: 436-5413	
<b>Northern RJ</b> NRJ		<b>Northern RJ</b> NRJ	
112 Northern Regional Correctional Dr. Moundsville, WV 26041		112 Northern Regional Correctional Dr. Moundsville, WV 26041	
<i>Shawn Straughn</i>	843-4067 FAX: 843-4089	<i>Shawn Straughn</i> 843-4067 FAX: 843-4089	
<b>South Central RJ and CF</b> SCRJ		<b>South Central RJ and CF</b> SCRJ	
1001 Centre Way Charleston, WV 25309		1001 Centre Way Charleston, WV 25309	
<i>Craig Roberts</i>	558-1336 FAX: 558-7307	<i>Craig Roberts</i> 558-1336 FAX: 558-7307	
<b>Tygart Valley RJ and CF</b> TVRJ		<b>Tygart Valley RJ and CF</b> TVRJ	
400 Abbey Rd. Belington, WV 26250		400 Abbey Rd. Belington, WV 26250	
<i>Bryan Lanham</i>	637-0382 FAX: 637-0289	<i>Bryan Lanham</i> 637-0382 FAX: 637-0289	
<b>Gene Spadaro JC</b> GSJC		<b>Gene Spadaro JC</b> GSJC	
106 Martin Dr. Mt. Hope, WV 25880		106 Martin Dr. Mt. Hope, WV 25880	
<i>Timothy Meadows</i>	877-6890 FAX: 877-6929	<i>Timothy Meadows</i> 877-6890 FAX: 877-6929	
<b>Lorrie Yeager Jr. JC</b> LYJC		<b>Lorrie Yeager Jr. JC</b> LYJC	
907 Mission Dr. Parkersburg, WV 26101		907 Mission Dr. Parkersburg, WV 26101	
<i>Travis L. White</i>	420-4860 FAX: 420-4861	<i>Travis L. White</i> 420-4860 FAX: 420-4861	
<b>Sam Perdue JC</b> SPJC		<b>Sam Perdue JC</b> SPJC	
843 Shelter Rd. Princeton, WV 24739		843 Shelter Rd. Princeton, WV 24739	
<i>Gary Patton</i>	425-9721 FAX: 487-5543	<i>Gary Patton</i> 425-9721 FAX: 487-5543	
<b>WV Corrections Academy</b> WVCA		<b>WV Corrections Academy</b> WVCA	
103 Academy Dr. Glenville, WV 26351		103 Academy Dr. Glenville, WV 26351	
<i>Scott Patterson</i>	462-3044 FAX: 462-3052	<i>Scott Patterson</i> 462-3044 FAX: 462-3052	
<b>Abbreviations:</b>		<b>Abbreviations:</b>	
	Correctional Center : CC	Correctional Center : CC	
	Correctional Facility : CF	Correctional Facility : CF	
	Juvenile Center : JC	Juvenile Center : JC	
	Regional Jail : RJ	Regional Jail : RJ	

# WVDCR Parole Services Directory

Region 1	
<b>Huntington Office</b> <b>(304) 528-5515</b> 801 Madison Avenue, Rm 200 Huntington, WV 25704	
<b>100 – Kaitlin Watson (RD)</b> 101 – Brittany Williams 102 – Chad Starcher 103 – Joshua Vance 104 – John Smith 105 – Justin Wallace 106 – Russell Nuckles  107 – Derek Stotts 108 – Matthew Hill OA – Robin Murphy	
Region 3	
<b>Beckley Office</b> <b>(304) 256-6950</b> 3225 Robert C. Byrd Drive Beckley, WV 25801	<b>Lewisburg Office</b> <b>(304) 647-7545</b> 765 South Jefferson Street, St C Lewisburg, WV 24901
<b>300 – Jeremy Napier (RD)</b> 301 – Robert Sovine 302 – Ryan Kelly 304 – Mavi Walker 305 – Kyle Blethen 306 – Brandi Otey OA – Edith Stewart	
<b>320 – Jacob Jeffries</b> OA – Lana Pritt	
Region 5	
<b>Parkersburg Office</b> <b>(304) 420-4630</b> 225 Holiday Hills Dr, Suite 1 Parkersburg, WV 26104	<b>Wheeling Office</b> <b>(304) 238-1030</b> 100 17 <sup>th</sup> Street Wheeling, WV 26003
<b>500 – David Jones (RD)</b> 501 – Jeff Dyke 502 – Anthony DeMetro 503 – Clarissa Hill 540 – Jordan Vlach OA – Loretta Martin	
<b>520 – Kendall Witham</b> 521 – Melissa Kirkbride 522 – Matthew Szabat 523 – Shaun Crago 524 – Rebecca Parks OA – Beth Quinn	
Region 7	
<b>Martinsburg Office</b> <b>(304) 267-0055</b> 1520 Winchester Avenue Martinsburg, WV 25405	<b>Keyser Office</b> <b>(304) 788-0386</b> 102 North Main St. PO Box 244 Keyser, WV 26726
<b>700 – Kelley Green (RD)</b> 701 – Brittany Johnson 702 – Ethan Landis 703 – Cheryle Lippman 704 – Jessica Marsh 705 – Drew Lidbeck 706 – Adam Lewis OA – Linda Seamster OA – Dena Albright	
<b>720 – Joshua Myers</b> 721 – Ryan Weese 722 – Kristi Shockey OA – Shawna Sites	

**Director of Parole**  
 Robert Arnold (1)

**Director of Parole's Secretary**  
 Erika Dunlap – Central Office  
 1409 Greenbrier Street  
 Charleston, WV 25311  
 (304) 558-2036

**Northern District Supervisor**  
 Matthew Currence (2) – Elkins Office

**NDS Secretary**  
 Marilyn Bennett – Elkins Office

**Southern District Supervisor**  
 Doug Workman (3) – Princeton Office

**SDS Secretary**  
 Angela Trump – Beckley Office

Region 2	
<b>Charleston Office</b> <b>(304) 558-3597</b> 1339 Plaza East Charleston, WV 25301	<b>Logan Office</b> <b>(304) 792-7218</b> 1103 George Kostas Drive, St 200 Logan, WV 25601
<b>200 – Mike Brown (RD)</b> 201 – Roshana Gray 202 – Garrie White 203 – Jordan McKinley 204 – Tyler Spurlock 205 – Eli DesRocher 206 – Robert Nichols 207 – Tyler Hall OA – Mary Ashby	
<b>220 – Rebecca Harrison</b> 221 – John Tackett  OA – Linley Marcum	
Region 4	
<b>Princeton Office</b> <b>(304) 425-7487</b> 159 Davis Street Princeton, WV 24739	<b>Welch Office</b> <b>(304) 436-3851</b> 110 Park Avenue, Suite 111 Welch, WV 24801
<b>400 – Jill Bryant (RD)</b> 401 – Irisca Leggett 402 – Georgetta Muncy 403 – Amanda Brookman  404 – Erica Martin 405 – William Hicks 406 – Chris Webb OA – Angela Garrett	
<b>420 – James DeWitt</b> 421 – Allery Lockridge OA – Miranda Adams	
Region 6	
<b>Elkins Office</b> <b>(304) 637-0379</b> 1513 Harrison Avenue, Unit 27 Elkins, WV 26241	<b>Clarksburg Office</b> <b>(304) 627-2308</b> 215 West Main Street Clarksburg, WV 26301
<b>600 – Aaron Linn (RD)</b> 601 – Allen Vanscoy 602 – Shari Wince 603 – Erin Hollen 604 – Michaela Lewis-Lambert	
<b>620 – Vacant</b> 621 – Stephanie Giffin 622 – Lesley Marteny 623 – Brooke Riffe 624 – Randi Jordan 625 – Phillip Poling OA – Kelly Foreman	
Region 8	
<b>Enhanced Supervision</b>	
<b>800 – Bryan Thompson (RD)</b>  801 – David Toler 802 – Bryan Ware 803 – Ryan Beals 804 – Calvin Lease 805 – Joe Hall 806 – Joshua Lott 807 – Melissa Richmond 808 – Brian Templeton 222 – Laura Toler OA – Eugenia Russell	<b>Elkins Parole Office</b>  Beckley Parole Office Clarksburg Parole Office Charleston Parole Office Martinsburg Parole Office Princeton Parole Office Parkersburg Parole Office Wheeling Parole Office Huntington Parole Office Electronic Monitoring – Logan Parole Elkins Parole Office